

Room Management Audio Tracking

— User Manual —

FONE700 + CAM550

DISCLAIMER

No warranty or representation, either expressed or implied, is made with respect to the contents of this documentation, its quality, performance, merchantability, or fitness for a particular purpose. Information presented in this documentation has been carefully checked for reliability; however, no responsibility is assumed for inaccuracies. The information contained in this documentation is subject to change without notice.

In no event will AVer Information Inc. be liable for direct, indirect, special, incidental, or consequential damages arising out of the use or inability to use this product or documentation, even if advised of the possibility of such damages.

TRADEMARKS

“AVer” is a trademark owned by AVer Information Inc. Other trademarks used herein for description purpose only belong to each of their companies.

COPYRIGHT

©2025 AVer Information Inc. All rights reserved. | April 8, 2025

All rights of this object belong to AVer Information Inc. Reproduced or transmitted in any form or by any means without the prior written permission of AVer Information Inc. is prohibited. All information or specifications are subject to change without prior notice.

NOTICE

Specifications Are Subject to Change without Prior Notice. The Information Contained Herein Is to Be Considered for Reference Only.

DRAFT

More Help

For FAQs, technical support, software and user manual download, please visit:

Non-USA

Download Center: <https://www.aver.com/download-center>

Technical Support: <https://www.aver.com/technical-support>

USA

Download Center: <https://www.averusa.com/business/support>

Technical Support: <https://averusa.force.com/support/s/contactsupport>

Contact Information

Headquarters

AVer Information Inc.
8F, No.157, Da-An Rd., Tucheng
Dist., New Taipei City 23673, Taiwan
Tel: +886 (2) 2269 8535

USA Branch Office

AVer Information Inc., Americas
44061 Nobel Drive, Fremont, CA
94538, USA
Tel: +1 (408) 263 3828
Toll-free: +1 (877) 528 7824

Europe Branch Office

AVer Information Europe B.V.
Westblaak 134, 3012 KM,
Rotterdam, The Netherlands
Tel: +31 (0) 10 7600 550

Japan Branch Office

アバー・インフォメーション株式会社
〒160-0023 日本東京都新宿区西新
宿 3-2-26 立花新宿ビル 7 階
Tel: +81 (0) 3 5989 0290
お客様サポートセンター(固定電話の
み): +81 (0) 120 008 382

Vietnam Branch Office

Công ty TNHH AVer Information
(Việt Nam)
Tầng 5, 596 Nguyễn Đình Chiểu, P.3,
Quận 3, Thành phố Hồ Chí Minh
700000, Việt Nam
Tel: +84 (0) 28 22 539 211
Hỗ trợ kỹ thuật: +84 (0) 90 70 080 77

DRAFT

Introduction

Pair your FONE700 Speakerphone with CAM550 PTZ Conferencing Camera to use Audio Tracking. When the speakerphone detects a sound, it sends the X, Y, and Z axis direction value to the camera and triggers the camera audio tracking function.

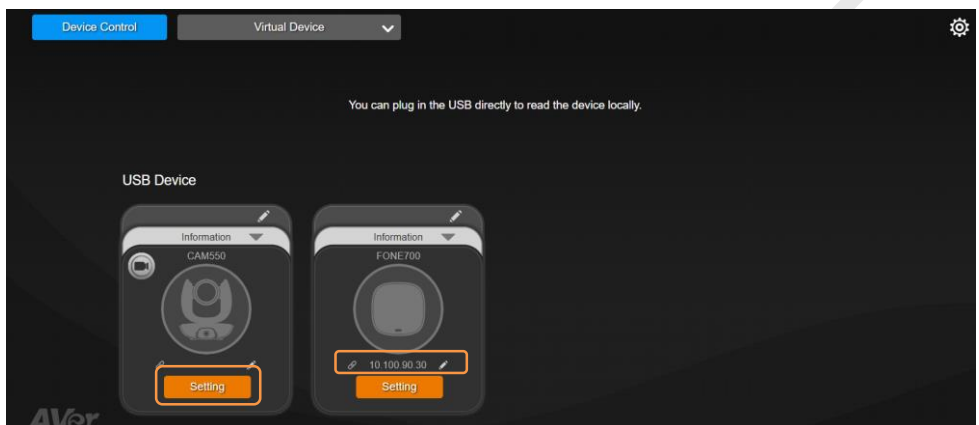
Get Started

To use Audio Tracking on FONE700, follow the steps below to set up FONE700 with CAM550.

1. Download and install **Room Management** from AVer Download Center (<https://www.aver.com/download-center>.)
2. Update your device firmware to the latest version.

Pair FONE700 with CAM550

1. Connect your CAM550 and FONE700 Hub to the power adapter to power up, and connect these two devices to your computer using USB cables.
 - CAM550: USB Type-B to Type-A Cable
 - FONE700: USB-C Cable
2. Connect the Ethernet cable to the FONE700 Hub. You will need FONE700 IP address for further setup.
3. Launch Room Management to see CAM550 and FONE700 on **Device Control** page. Copy FONE700 IP address. Click the pencil icon to switch between Static IP and DHCP.
4. Click **Setting** on **CAM550** device card.

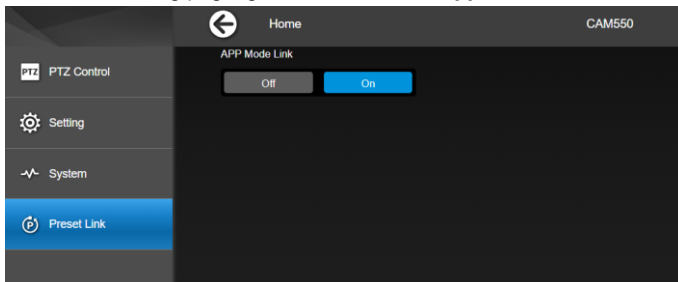


5. You may pair with CAM550 and FONE700 by **APP Mode** or **Camera Mode**.
For dual camera tracking, please select **APP Mode** and follow the steps below:

Notes:

- APP Mode: FONE700 sends the audio coordinate data to Room Management, which then forwards the coordinates to CAM550 for audio tracking.
- Camera Mode: FONE700 sends the audio coordinate data to CAM550 for audio tracking.

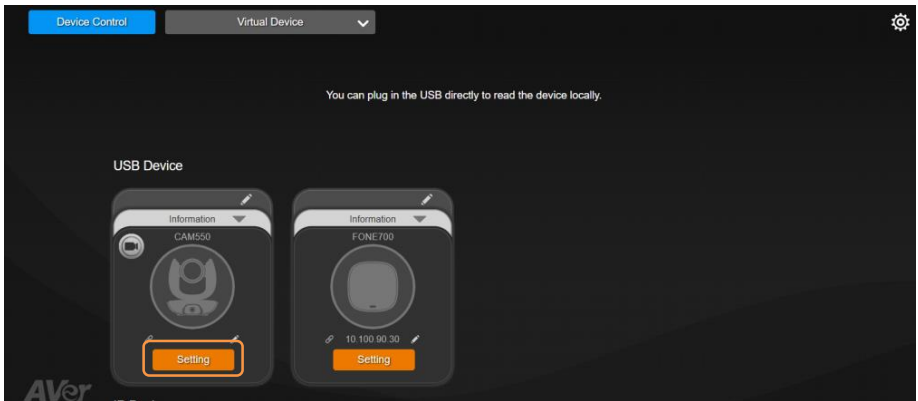
In CAM550 setting page, go to **Preset Link > App Mode Link**, and click **On**.



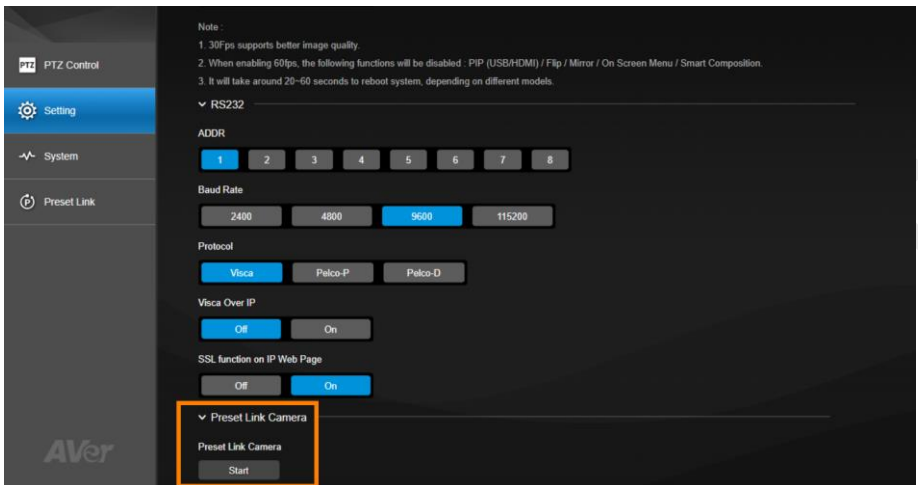
6. Now you may set up FONE700 audio tracking settings. Please refer to [<FONE700 Audio Tracking Setup>](#).

- **Pair with Camera Mode:**

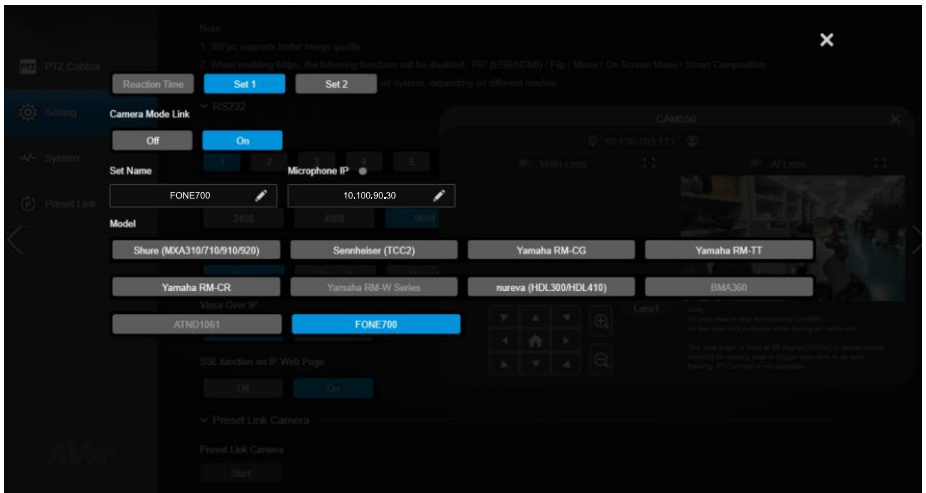
1. Click **Setting** on **CAM550** device card.



2. Go to **Setting > Preset Link Camera**, click **Start**.



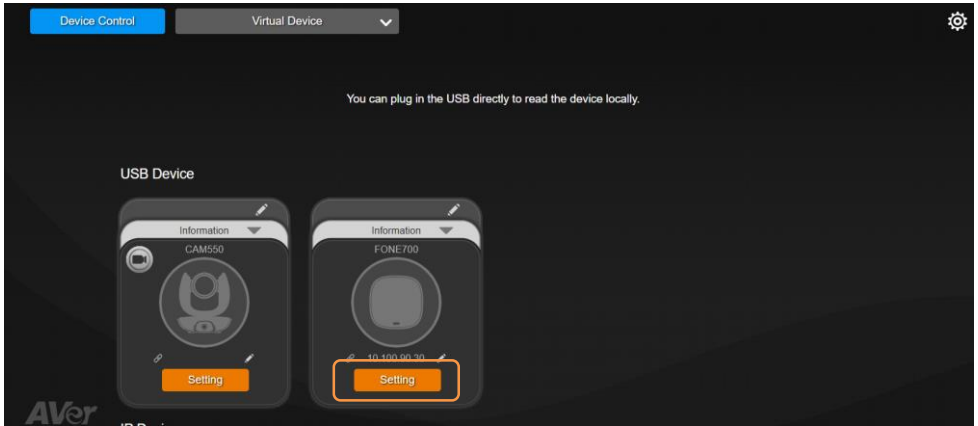
3. Enter **"FONE700"** in Set Name and FONE700 IP in Microphone IP. Select **FONE700** in Model list.



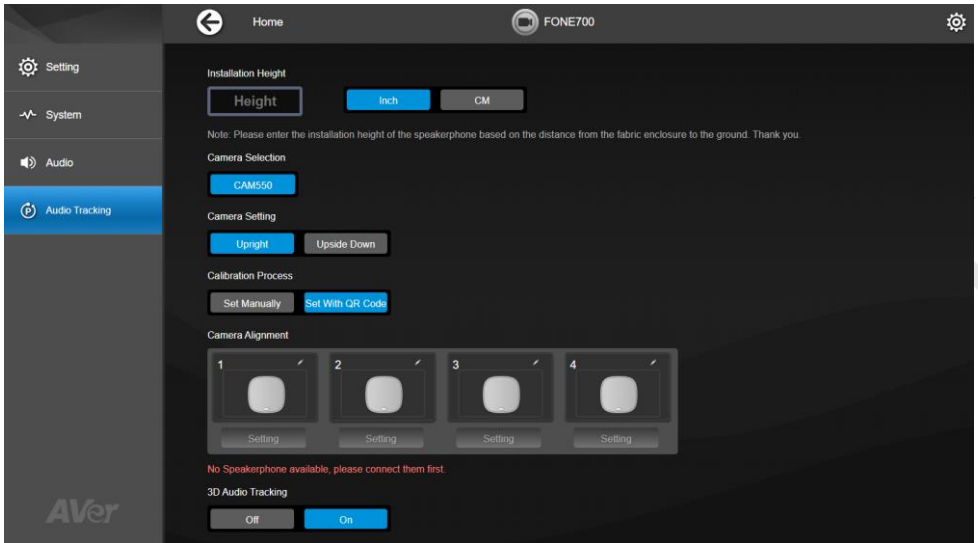
4. Now you may continue to set up FONE700 audio tracking settings.

FONE700 Audio Tracking Setup

1. Return to Room Management Home page, and click **Setting** on **FONE700** device card.



2. Configure the following settings.



Item	Description
Installation Height	Enter the installation height of your speakerphone. You may select the measurement unit between Inch and CM .
Camera Selection	1. Connect a USB plug-and-play camera to the power adapter and USB cable.

	<ol style="list-style-type: none"> Refresh Room Management main page to check if your camera is detected. Go to Audio Tracking > Camera Selection and click on your camera to pair up with FONE700 Speakerphone.
Camera Setting	<ul style="list-style-type: none"> Upright: Select the option when you position the camera normally. Upside Down: Select the option when you hang up the camera vertically.
Calibration Process	<ul style="list-style-type: none"> Set Manually: Follow the on-screen instruction to align your camera with FONE700. Set With QR Code: Stick the included QR Code alignment sticker on your FONE700, and follow the on-screen instruction for further setups: <ol style="list-style-type: none"> Select the direction of the FONE700 AVer logo in the view. Adjust your camera's pan, tilt, and zoom so that the QR code fits within the red search frame. Once the QR code is recognized, it will be outlined green. Click Calibration to start the process. When completed, fit 50%-75% of the FONE700 within the green frame for more accurate calibration.
Camera Alignment	<ul style="list-style-type: none"> Setup <ol style="list-style-type: none"> Select a connected camera in Camera Selection. Click Setting, and follow the on-screen instruction to align your FONE700 Speakerphone. After setting up the first speakerphone, select: <ul style="list-style-type: none"> Manual Alignment to continue setting up other speakerphones with camera alignment; Finish and Set Speakerphone Position to set up other speakerphones by entering their 3D distances in relation to the first one. If necessary, click Redo to realign the speakerphone. Rename Click the pencil icon on the upper right corner of the thumbnail to rename the speakerphones.
3D Audio Tracking	Turn FONE700 audio tracking on or off. Turning it on will turn off your linked camera's Audio Tracking mode.
Group View	Turn on the function to allow the camera to track and frame multiple active speakers.
Trigger Speed	<p>Select an audio tracking trigger speed. Slower speed is useful for ignoring short utterances during audio tracking.</p> <ul style="list-style-type: none"> Slow: Audio track after 2~3 seconds.

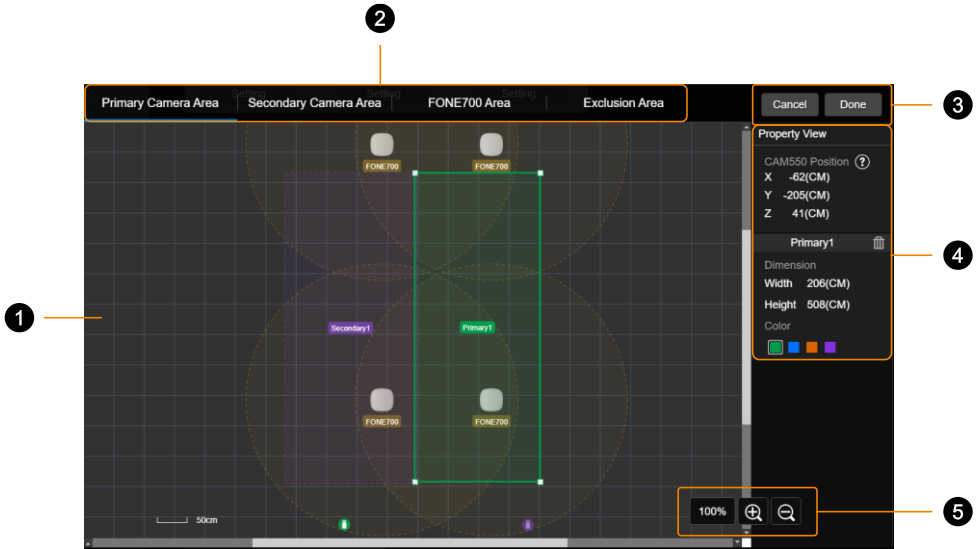
	<ul style="list-style-type: none"> • Medium: Audio track after 1~2 seconds. • High: Audio track immediately.
Audio Tracking Interval	Select an interval time for the camera to return to Preset 0 after it detects no sound. If Off is selected, the camera will stay at the last position.
Setting Lock	Turn on the function to lock all the current settings.
Dual Camera Tracking	Connect 2 CAM550 cameras to your computer, and select On for dual camera tracking. For further configuration, click Setting and refer to the following instructions.

DRAFT

Dual Camera Tracking

When more than one CAM550 is installed in your meeting room, you may customize the effective tracking area. We recommend setting the area to cover angles where the cameras can capture participants' faces directly.

Pair CAM550 with FONE700 Speakerphone before setting up this function.



1. Workspace

Drag and drop to set, resize or move the customizable tracking area.

2. Setting Tabs

Set up tracking areas for the primary and secondary CAM550, and view FONE700 effective audio tracking area.

3. Save and Exit

Click **Done** to save settings after configuration.

4. Property View

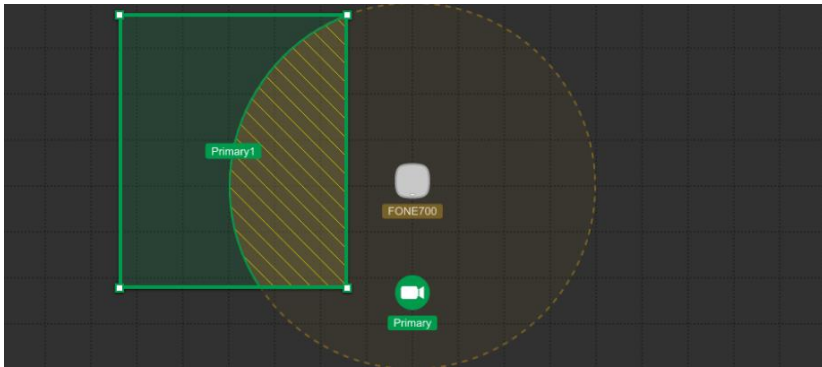
View and edit the tracking area position and dimension

5. Zoom in and out

Adjust the workspace display size.

To set up effective tracking area:

1. Drag and drop a rectangle on the workspace to set up the primary camera tracking area.
The overlapping area between the camera tracking area and the speakerphone audio receiving range will be the effective audio tracking area.



2. Drag the selection handles to resize, or enter dimension values in **Property View**. You may also change the highlighting color.
3. Set up the camera tracking area for the second camera with the same steps mentioned above.

Notes:

Make sure you select CAM550 as the second camera in **Secondary Camera Area > Property View**.

To set up exclusion area:

1. Go to **Exclusion Area** tab, drag and drop a rectangle on the workspace to set up the area that you wish to exclude from the effective tracking area.
2. To delete the exclusion area, select in the **Property View** and click the trash can icon.

