



User Guide for Skype for Business

Published Date : September 2017

Copyright © 2017

Copyright Notice

This publication, including all photographs, illustrations and software, is protected under international copyright laws, with all rights reserved. Neither this manual, nor any of the material contained herein, may be reproduced without written consent of the author.

Disclaimer

The information in this document is subject to change without notice. The manufacturer makes no representations or warranties with respect to the contents hereof and specifically disclaim any implied warranties of merchantability or fitness for any particular purpose. The manufacturer reserves the right to revise this publication and to make changes from time to time in the content hereof without obligation of the manufacturer to notify any person of such revision or changes.

Limitations of Liability

UNDER NO CIRCUMSTANCES SHALL AVER BE LIABLE FOR DAMAGES OF ANY CHARACTER (E.G. DAMAGES FOR LOSS OF PROFIT, SOFTWARE RESTORATION, WORK STOPPAGE, LOSS OF SAVED DATA OR ANY OTHER COMMERCIAL DAMAGES OR LOSSES) RESULTING FROM THE APPLICATION OR IMPROPER USE OF THE AVER PRODUCT OR FAILURE OF THE PRODUCT, EVEN IF AVER IS INFORMED OF THE POSSIBILITY OF SUCH DAMAGES. FURTHERMORE, AVER WILL NOT BE LIABLE FOR THIRD-PARTY CLAIMS AGAINST CUSTOMER FOR LOSSES OR DAMAGES. AVER WILL IN NO EVENT BE LIABLE FOR ANY DAMAGES IN EXCESS OF THE AMOUNT AVER RECEIVED FROM THE END-USER FOR THE PRODUCT.

Trademarks

Microsoft , Skype for Business and Lync are registered trademark of Microsoft Corporation. All other products or corporate names mentioned in this documentation are for identification and explanation purposes only, and may be trademarks or registered trademarks of their respective owners.



Content

Revision History and System Requirement	2
About this Guide	3
Important Notice	3
Features of AVer SFB Solution	3
Required Skills by administrators	3
The SFB license upgrade.....	4
Understanding Skype for Business Settings	5
Skype for Business Online and On-Premises setup instruction	7
Download Skype for Business logs to analyze	12
SfB Functions Limitations on EVC MCU and SVC series.....	13

Revision History and System Requirement

Firmware Version	Region	Release	Model
v.01	WW	2017.09	EVC MCU, SVC series

About this Guide

The purpose of this guide is to explain the limitations of many deployment models, architectures, and solutions, and to help administrators deploy AVer products in a Microsoft environment. The Microsoft environment can include Skype for Business or Lync Server.

Important Notice

1. When Microsoft publishes a new version of MS-SIP, the source program material for Lync/Skype for Business, AVer will update the products' development components to support the new version. AVer will indicate which versions of Lync/Skype for Business are supported in this release note of known issue, according to system compatibility with MS-SIP.
2. The following versions are tested functionality and compatibility for Skype for Business (Lync).
The server: Lync 2013, Skype for business 2015 & Windows client: v15.0.4420 , v16.0.4417
3. SFB on PC site only can see one streaming of presentation or live view from EVC MCU and SVC series.
4. EVC MCU support up to maximum 4 sites of SfB, SVC series support up to maximum 15 sites of SfB.
5. EVC MCU support Skype for Business with a license, SVC series support SKYPE for Business is default.

Features of AVer SFB Solution

- High-quality video up to 1080p @30fps between Skype for Business clients and AVer endpoints.
- Multipoint video conferencing system connecting between Skype for Business, SIP, and H.323 simultaneously.
- Participation in Skype for Business-hosted multipoint conferences, only support voice. (TBD)
- Support Meet Now for Microsoft Office O365 environments. (TBD)
- AVer ScreenShare software is a content sharing solution for Microsoft Skype for Business clients and standard-based video endpoints. Enabling Skype for Business client-side can content sharing to AVer EVC/SVC room systems.

Required Skills by administrators

This guide is to use Skype for Business to configure, customize, manage, and resolve administrators of AVer UC components. AVer wants administrators to be middle-level IT professionals in systems management.

Please note that this guide does not provide a complete management or maintenance program for Skype for Business or Microsoft Lync Server 2010 or 2013. For a complete management process, see Skype for Business Server 2015 on Microsoft TechNet.

This document assumes that the administrator understands the following systems that have been deployed and that the Microsoft administrator can help the administrator of the AVer UC solution:



- Microsoft Active Directory
- Domain name servers
- Microsoft Domain accounts

To call with Microsoft components, including Skype for Business clients and Skype for Business hosted multipoint calls, your AVer device must have an account in a Windows domain in a Skype for Business Server environment. You can create a new Skype for Business account for EVC MCU and SVC series device, or you can set up EVC MCU and SVC series devices using an existing Skype for Business account. You need to configure the correct features and settings in the account level and domain level configuration policies.

Deploying On-Premises Servers with Skype for Business Online

When deploying Skype for Business Online, you must create a small on-premises Skype for Business Server 2015 or Microsoft Lync Server 2013 deployment. At minimum, you must deploy a single Front End Server and single Edge Server to provide SIP connectivity between AVer EVC/SVC and Skype for Business Online in Office 365. The required on-premises deployment can use your existing Front End and Edge servers or you can create a new on-premises deployment specifically for this integration.

In either case, you can use either the *Hybrid* (Split-Domain) or *Federated* models to provide the workflow for the AVer EVC/SVC for any Skype for Business Online users homed in Office 365.

- A split-domain hybrid deployment uses the same SIP domain between the on-premises installation and the online tenancy.
- A federated deployment is an alternate on-premises installation leveraging a different SIP domain used only by the back-end components to communicate with the primary SIP domain that you configure solely within Skype for Business Online.

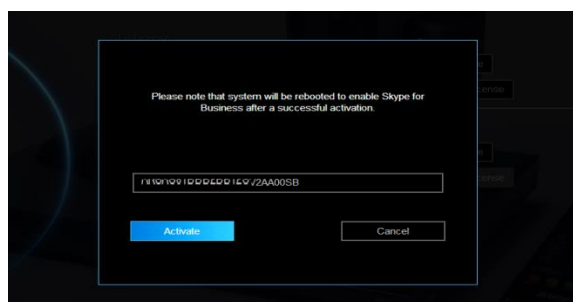
The SFB license upgrade

1. EVC MCU using Skype for Business 2015, you must install the Skype for Business Interoperability License. SVC series support Skype for Business default, you don't need to install license.
2. Compatible with firmware later than v14.42, you can download the latest firmware version from AVer Website.
3. Please following the upgrade instructions Skype for Business as below:

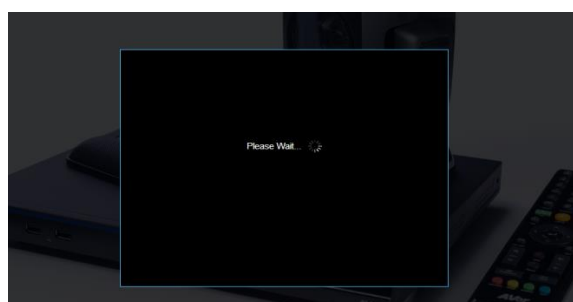
- ▶ **Go to EVC MCU license upgrade page.**



▶ **Enter Skype for Business license key.**



▶ **Processing and the system rebooting.**



▶ **Completed.**



Tips : Once the upgrade page of Skype for Business is not fully displayed, please try to clear your browser's cookie temporary internet files.

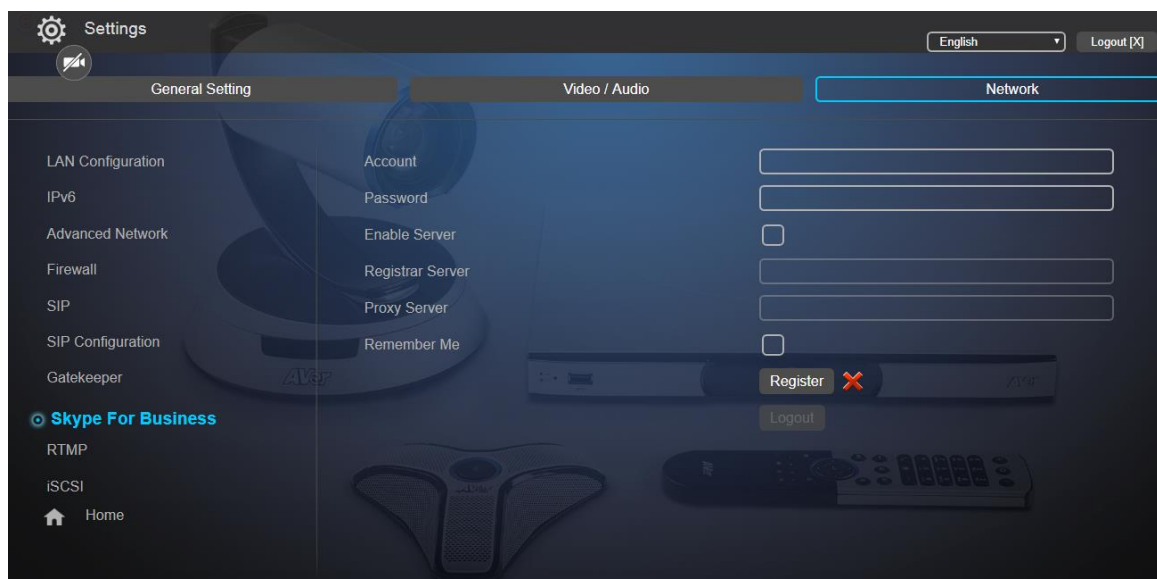
Understanding Skype for Business Settings

This section provides an overview of the Skype for Business settings available on the EVC MCU / SVC Series system shown in the following figure.

1. Open a browser window and in the Address field enter the EVC MCU / SVC Series system IP address.
2. Go to Settings > Network and select Skype for Business.

EVC MCU / SVC Series system Skype for Business settings:





The following list describes all the settings on the **Skype for Business** screen.

- **Account/Password:** Enter your Skype for Business account and password.
- **Enable Server:** Disable to go the Office 365 online registration process, Enable to go on-process process.

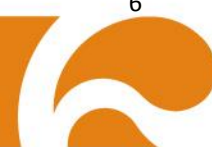
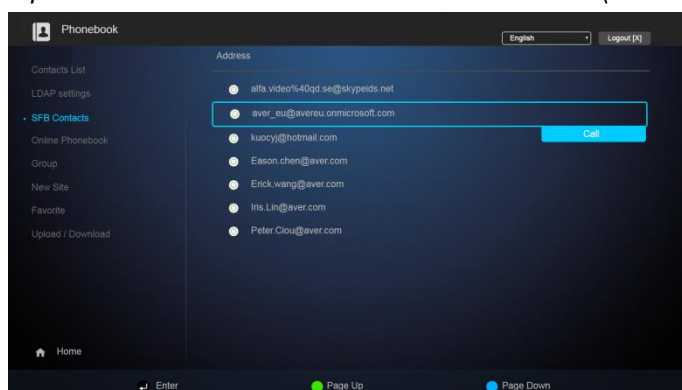
Registrar Server: Front End Server, the Front End Server is at the core of any SfB Server 2015 deployment. It provides the links and services for user Authentication, Registration, Presence, Address Book, A/V Conferencing, Application Sharing, Instant Messaging, Web Conferencing and Dial-in over PSTN.

- **Proxy Server:** Edge Server , the Edge Server (or Edge Pool) sits on the perimeter of your organization and its role is to enable secure remote access to the internal (On-Premise) Skype infrastructure. The Edge Server also enables 'Federation' with external organization, thus providing secure communications.

Tip: Note that in a Microsoft environment, the Proxy server and the Registrar server are always the same server.

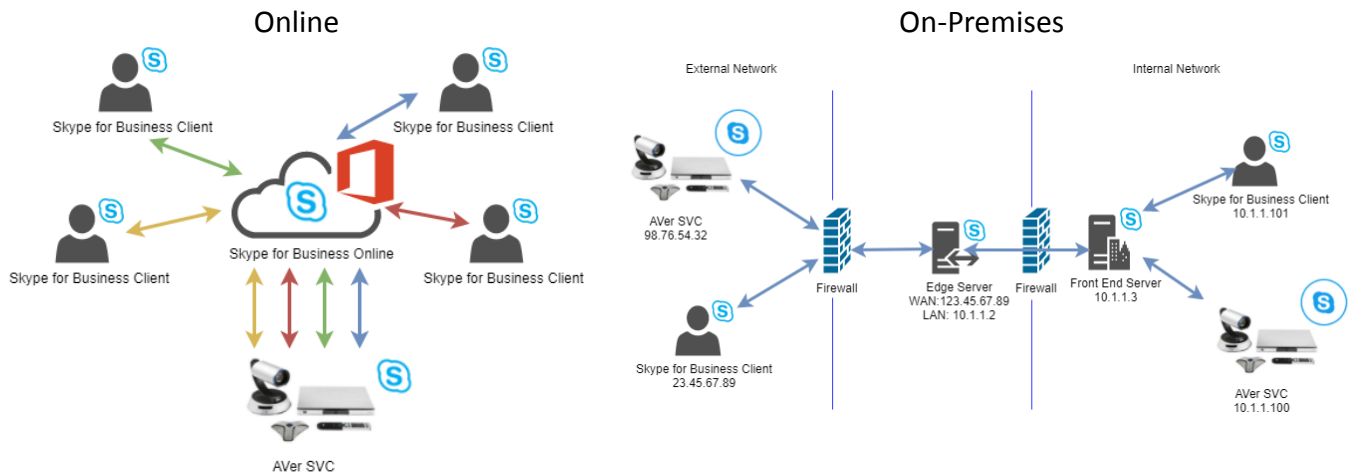
- **Remember me:** To memorize the Skype for Business account.
- Click “Register” to register the Skype account. After registering, far site can enter the registered Skype for Business account to call to SVC system.

Tip: User can make a call from SFB contactor list. (Phonebook > SFB Contacts)



Skype for Business Online and On-Premises setup instruction

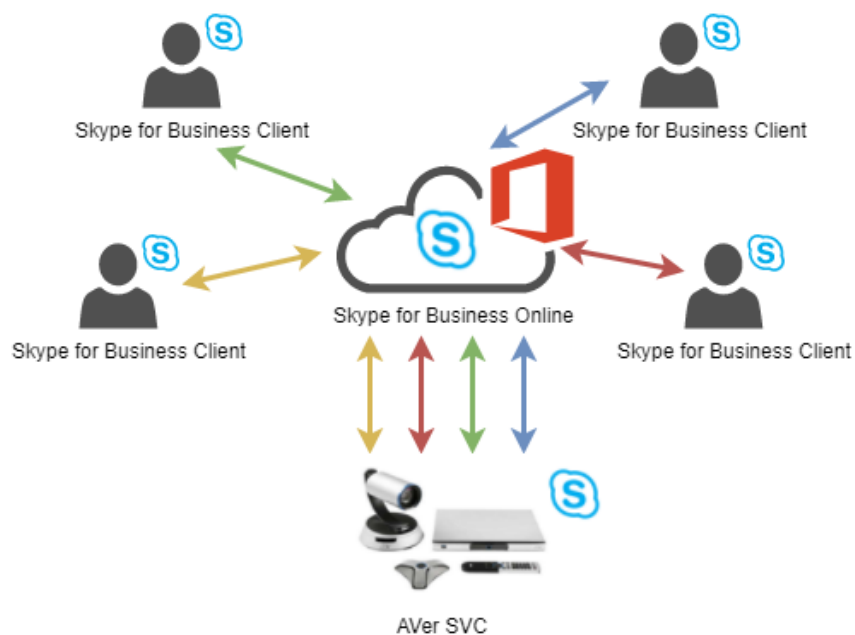
AVer new released SVC series video conferencing systems are able to support Skype for Business **Online** and Skype for Business **On-Premises** network. User can use their Skype for Business Online account on SVC to host a video conference with people in your Skype for Business contacts and other H.323 / SIP endpoints. Or, SVC could be part of your enterprise Skype for Business On-Premises network in meeting rooms, and bridge to a H.323 / SIP meeting.



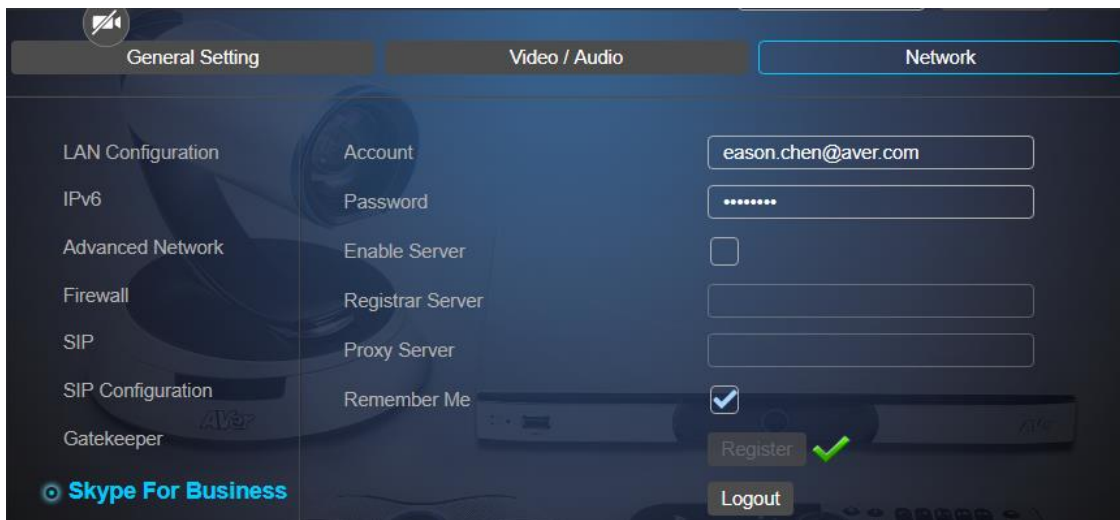
How to set up Skype for Business **Online** on AVer SVC video conferencing system?

Before you start...you needs following items:

- ✓ AVer SVC video conferencing system on firmware version 00.20.00.74
- ✓ Microsoft Skype for Business Online account (part of MS Office365 package)

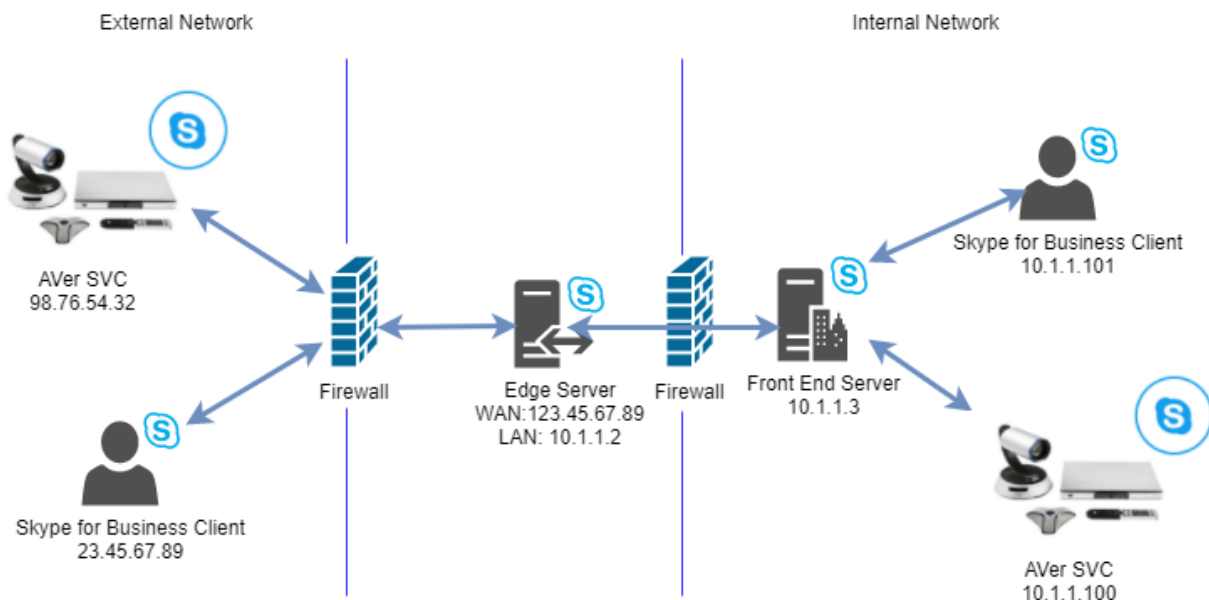


1. Go to SVC menu > Settings > Network > Skype for Business



2. Enter your Skype for Business sign in address and password to Account and Password field.
3. Click on Register button to sign in.
4. SVC will return sign in status. Green check mark: Success; Red X mark: fail.
5. If SVC did not sign in successfully, please double check your sign in address and password, and make sure NTP server is enabled on SVC (General Setting > Date and Time).

How to set up Skype for Business **On-Premises** on AVer SVC video conferencing system?



Before you start...you need following items:

- ✓ AVer SVC video conferencing system on firmware version 00.20.00.74
- ✓ Skype for Business On-Premises Account
- ✓ Skype for Business Front End Server IP address



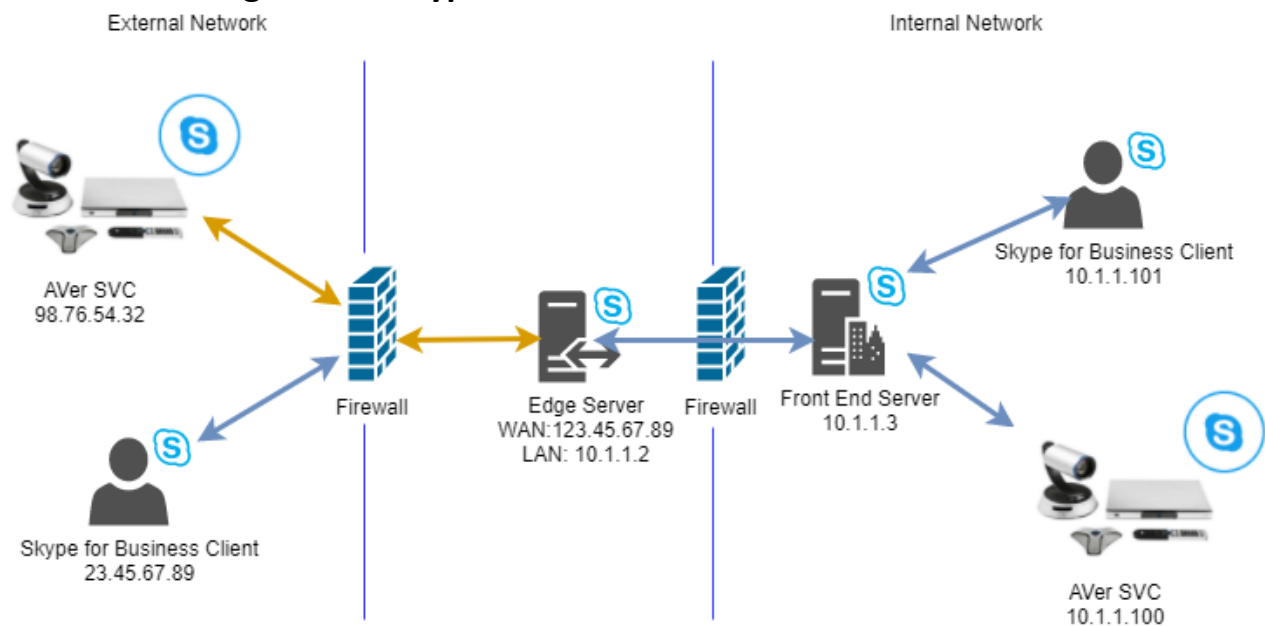
- ✓ Skype for Business Edge Server IP address
- ✓ Enabled NTP (Network Time Protocol) server on SVC
- ✓ Understanding of SVC's position in Skype for Business On-Premises network

Skype for Business On-Premises has very flexible network structure on its function options and capable to co-operate with numbers of Microsoft UC and directory servers for different functionalities. Therefore, to setup Skype for Business On-Premises on SVC, you are required to have basic level knowledge of about your Skype for Business On-Premises network. Please try to answer following questions and they will lead you to proper setup scenarios.

Q1. Where do you expect SVC to connect Skype for Business server from? internal network (Go Q2)? or external network (scenario A)?

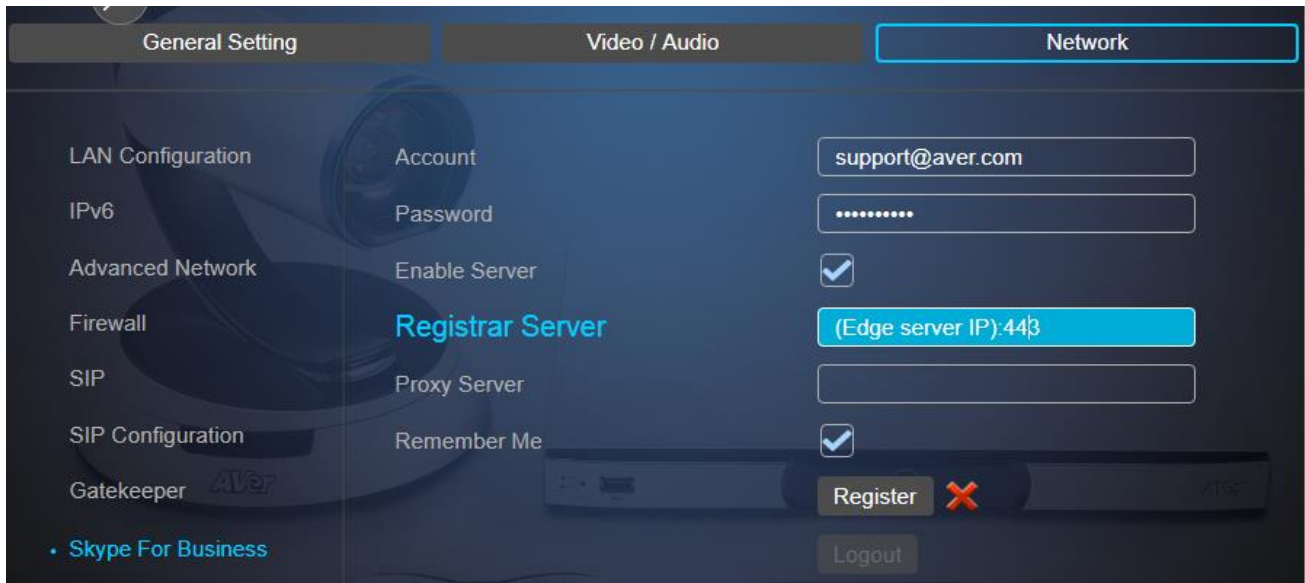
Q2. Is your Edge Server is same as your Front End Server? Yes to scenario B; No to scenario C.

Scenario A – SVC registers to Skype for Business On-Premises from external network.



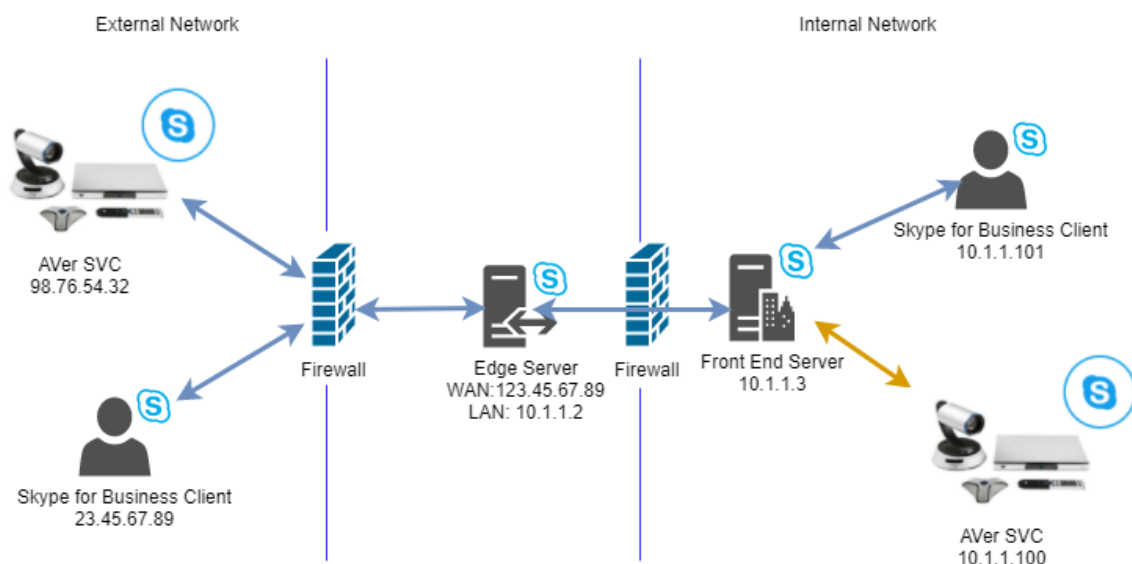
1. Go to SVC menu > Settings > Network > Skype for Business





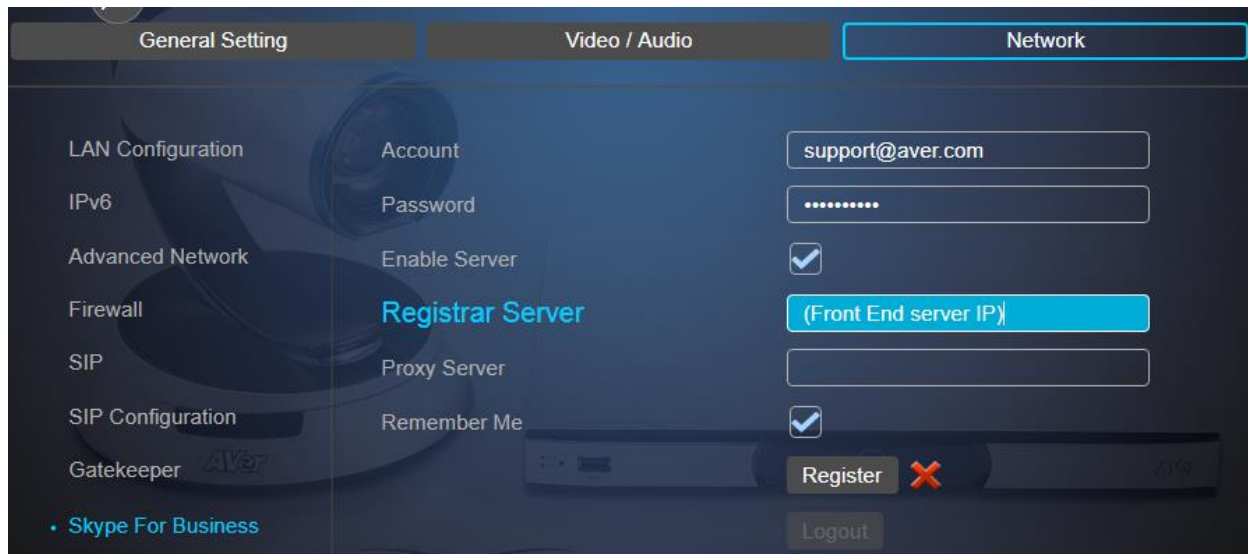
2. Enter your Skype for Business sign in address and password to Account and Password field.
3. Enable Server for manual server setup.
4. Enter your Edge Server **WAN** IP address and “:443” in Registrar Server and Proxy Server fields.
6. Click on Register button to sign in.
7. SVC will return sign in status. Green check mark: Success; Red X mark: fail.
8. If SVC did not sign in successfully, please double check your sign in address and password, and make sure NTP server is enabled on SVC (General Setting > Date and Time).

Scenario B – SVC registers to Skype for Business On-Premises server internally with Front End server only.



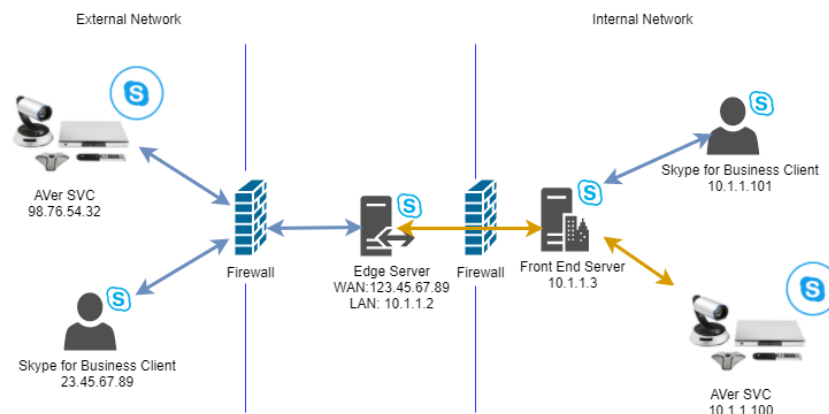
1. Go to SVC menu > Settings > Network > Skype for Business





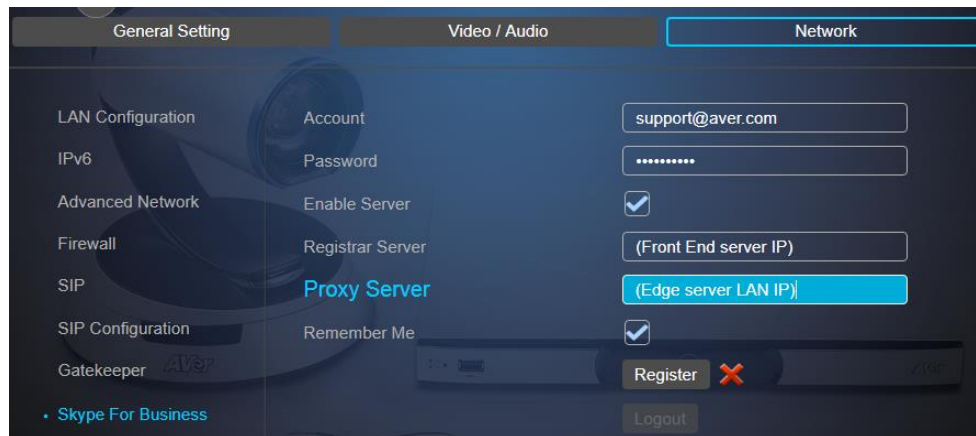
2. Enter your Skype for Business sign in address and password to Account and Password field.
3. Enable Server for manual server setup.
4. Enter your Front End Server IP address in Registrar Server and Proxy Server fields.
5. Click on Register button to sign in.
6. SVC will return sign in status. Green check mark: Success; Red X mark: fail.
7. If SVC did not sign in successfully, please double check your sign in address and password, and make sure NTP server is enabled on SVC (General Setting > Date and Time).

Scenario C – SVC registers to Skype for Business On-Premises server internally with Front End server and Edge server.



1. Go to SVC menu > Settings > Network > Skype for Business





2. Enter your Skype for Business sign in address and password to Account and Password field.
3. Enable Server for manual server setup.
4. Enter your Front End Server IP address in Registrar Server field and Edge server LAN address in Proxy Server field.
5. Click on Register button to sign in.
6. SVC will return sign in status. Green check mark: Success; Red X mark: fail.

If SVC did not sign in successfully, please double check your sign in address and password, and make sure NTP server is enabled on SVC (General Setting > Date and Time).

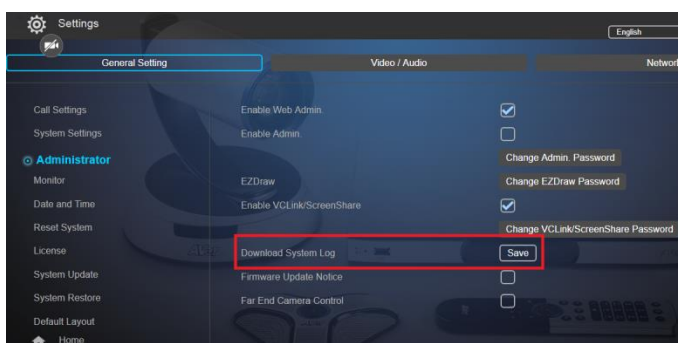
Download Skype for Business logs to analyze

You can download the system logs for AVer to analyze the Skype for Business administrator access that can help the administrator troubleshooting issues.

How to download logs:

1 Go to **Settings > Administrator > Download System Log**

2 Click **Save**.



SfB Functions Limitations on EVC MCU and SVC series

1. Get the all the conference call speaker voice that has joined on the conference from Microsoft Lync Server 2013 or Skype for Business Server 2015, so the EVC MCU and SVC series without displays the active speaker.
2. Don't support Remote Desktop Protocol (RDP) content sharing, please use AVer Screenshare do the sharing.
3. Don't support for Exchange Online server.
4. Don't support for native Microsoft application and desktop sharing with the Skype for Business clients
5. Don't support for Microsoft Real-Time Video (RTV).
6. Don't support scheduled conferences for Microsoft Office 365 environments.

