

# FONE520

## User Manual



## Federal Communication Commission Interference Statement



This device complies with Part 15 of the FCC Rules. Operation is subject to the following two conditions: (1) This device may not cause harmful interference, and (2) this device must accept any interference received, including interference that may cause undesired operation.

This equipment has been tested and found to comply with the limits for a Class B digital device, pursuant to Part 15 of the FCC Rules. These limits are designed to provide reasonable protection against harmful interference in a residential installation. This equipment generates uses and can radiate radio frequency energy and, if not installed and used in accordance with the instructions, may cause harmful interference to radio communications. However, there is no guarantee that interference will not occur in a particular installation. If this equipment does cause harmful interference to radio or television reception, which can be determined by turning the equipment off and on, the user is encouraged to try to correct the interference by one of the following measures:

- Reorient or relocate the receiving antenna.
- Increase the separation between the equipment and receiver.
- Connect the equipment into an outlet on a circuit different from that to which the receiver is connected.
- Consult the dealer or an experienced radio/TV technician for help.

FCC Caution: Any changes or modifications not expressly approved by the party responsible for compliance could void the user's authority to operate this equipment.

This transmitter must not be co-located or operating in conjunction with any other antenna or transmitter.

### Radiation Exposure Statement:

This equipment complies with FCC radiation exposure limits set forth for an uncontrolled environment. This equipment should be installed and operated with minimum distance 20cm between the radiator & your body.

### Europe – EU Declaration of Conformity



This device complies with the essential requirements of the R&TTE Directive 1999/5/EC. The following test methods have been applied in order to prove presumption of conformity with the essential requirements of the R&TTE Directive 1999/5/EC.

### Industry Canada statement

This device complies with RSS-210 of the Industry Canada Rules. Operation is subject to the following two conditions: (1) This device may not cause harmful interference, and (2) this device must accept any interference received, including interference that may cause undesired operation.

Ce dispositif est conforme à la norme CNR-210 d'Industrie Canada applicable aux appareils radio exempts de licence. Son fonctionnement est sujet aux deux conditions suivantes: (1) le dispositif ne doit pas produire de brouillage préjudiciable, et (2) ce dispositif doit accepter tout brouillage reçu, y compris un brouillage susceptible de provoquer un fonctionnement indésirable.

この装置は、クラスB情報技術装置です。この装置は、家庭環境で使用することを 目的としていますが、この装置がラジオやテレビジョン受信機に近接して使用されると、受信障害を引き起こすことがあります。取扱説明書に従って正しい取り扱いをして下さい。VCCI-B

## Battery Caution

Risk of explosion if battery is replaced by an incorrect type.

Dispose of used batteries in a safe and proper manner.

## DISCLAIMER

No warranty or representation, either expressed or implied, is made with respect to the contents of this documentation its quality, performance, merchantability, or fitness for a particular purpose. Information presented in this documentation has been carefully checked for reliability; however, no responsibility is assumed for inaccuracies. The information contained in this documentation is subject to change without notice.

In no event will AVer Information Inc. be liable for direct, indirect, special, incidental, or consequential damages arising out of the use or inability to use this product or documentation, even if advised of the possibility of such damages.

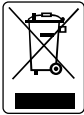
## TRADEMARKS

“AVer” is a trademark owned by AVer Information Inc. Other trademarks used herein for description purpose only belong to each of their companies.

## COPYRIGHT

©2017 AVer Information Inc. All rights reserved.

All rights of this object belong to AVer Information Inc. Reproduced or transmitted in any form or by any means without the prior written permission of AVer Information Inc. is prohibited. All information or specifications are subject to change without prior notice.

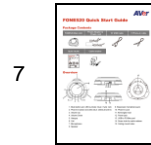
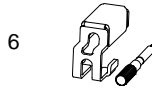
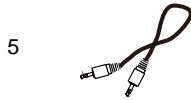
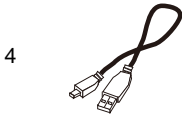
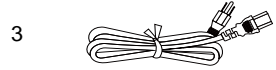
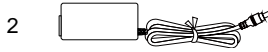
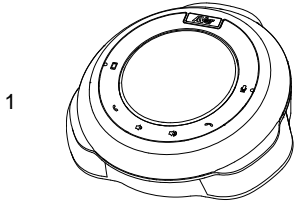


The mark of Crossed-out wheeled bin indicates that this product must not be disposed of with your other household waste. Instead, you need to dispose of the waste equipment by handing it over to a designated collection point for the recycling of waste electrical and electronic equipment. For more information about where to drop off your waste equipment for recycling, please contact your household waste disposal service or the shop where you purchased the product.

# Contents

Package Contents .....	1
Product Introduction .....	2
Top .....	2
Side & Bottom .....	3
LED Indicator .....	3
Setup FONE520 .....	4
Device Connection .....	4
Install USB Cable Retainer .....	4
Using FONE520 .....	5
Make a Call .....	5
External Microphone Connection .....	5
Phone In .....	6
AVer PTZApp .....	7
Install AVer PTZApp .....	7
Use AVer PTZApp .....	7
Test Speakerphone .....	13
Update Now .....	13

# Package Contents



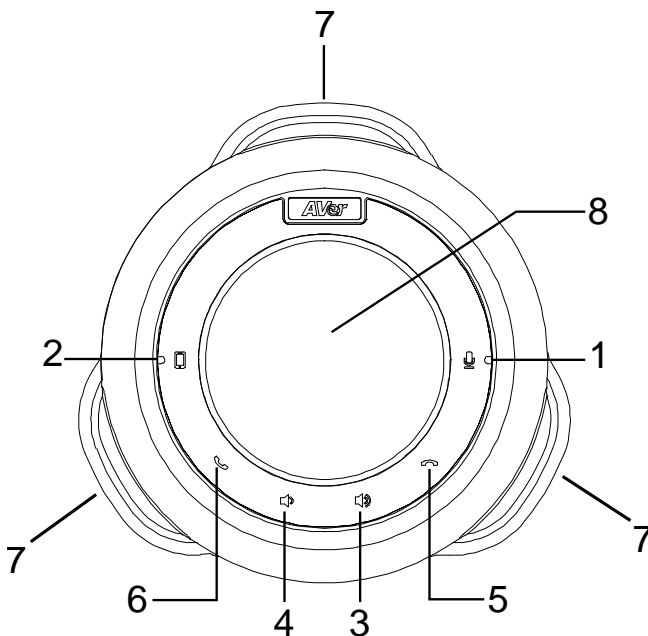
1. FONE520 unit
2. Power adapter
3. power cord\*

4. USB cable
5. Phone-in cable
6. USB Cable retainer
7. Quick Installation Guide

\*The power cord will vary depending on the standard power outlet of the country where it is sold.

# Product Introduction

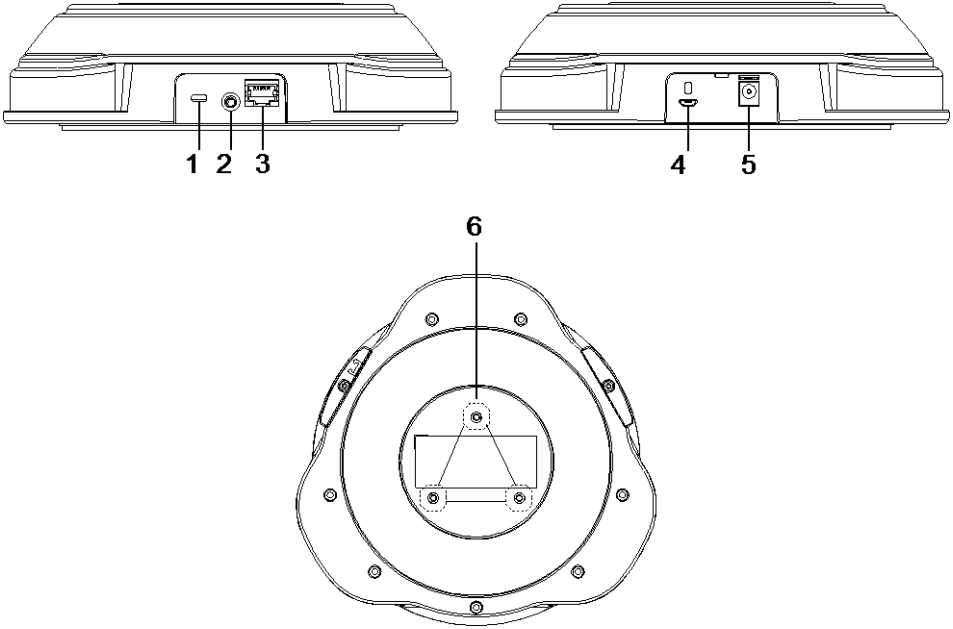
## Top



- |                          |                            |
|--------------------------|----------------------------|
| 1. Mute button and LED * | 2. Phone-in button and LED |
| 3. Volume Up*            | 4. Volume Down*            |
| 5. Hangup *              | 6. Call *                  |
| 7. Microphones           | 8. Speaker                 |



\* Buttons are capacitor touch sensitive.

## Side & Bottom



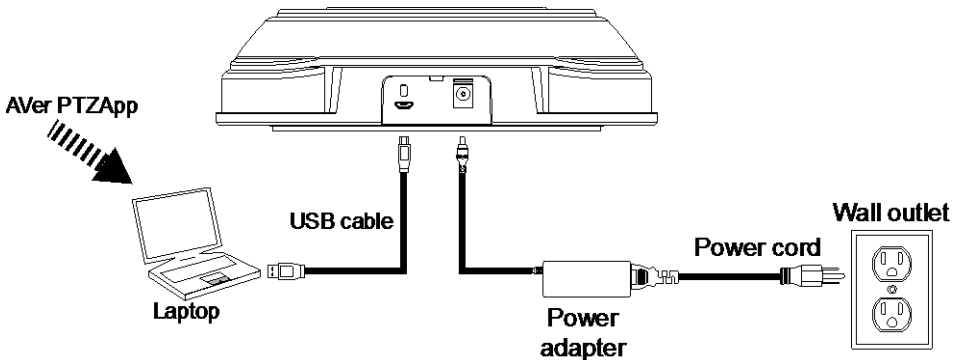
- |                              |                        |
|------------------------------|------------------------|
| 1. Kensington lock           | 2. Phone-in jack       |
| 3. Expansion microphone jack | 4. USB to PC/Mac port  |
| 5. Power jack                | 6. Ceiling mount holes |

## LED Indicator

Function	LED
Mute 	<ul style="list-style-type: none"> <li>- <b>Unmute:</b> blue</li> <li>- <b>Mute:</b> red</li> </ul>
Phone in 	<ul style="list-style-type: none"> <li>- <b>Off :</b> not tie in phone in device</li> <li>- <b>On:</b> tie in phone in device</li> </ul>

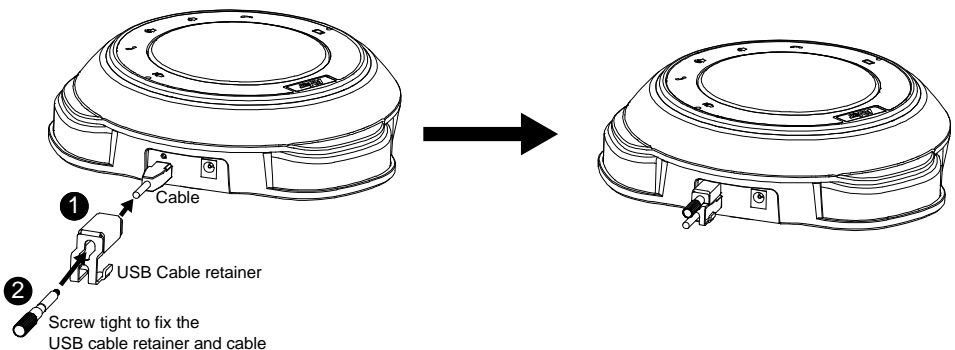
# Setup FONE520

## Device Connection



1. Connect FONE520 to laptop via included USB cable.
2. Install Aver PTZApp on laptop that is connected with FONE520. FONE520 is a Plug-n-Play Conference Phone for small to mid-conference rooms. The system requires no special drivers, but we do recommend installing the AVER PTZApp for the first time use. For information on how to install and use the AVER PTZApp, refer to the AVER PTZApp section in this user manual.  
**[Note]** Aver PTZApp version is 1.2.1034.38 at least or above.
3. Connect power cord to power adapter and FONE520. When mute LED turns steady, FONE520 is ready.
4. To make a call, run your video application (Skype™, Microsoft® Lync™, Google Hangout, Cisco WebEx®, GoToMeeting™, WebRTC, and etc.); select FONE520 as your audio device.

## Install USB Cable Retainer



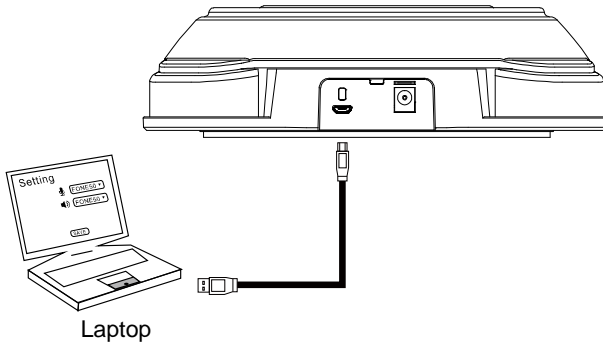


# Using FONE520

## Make a Call

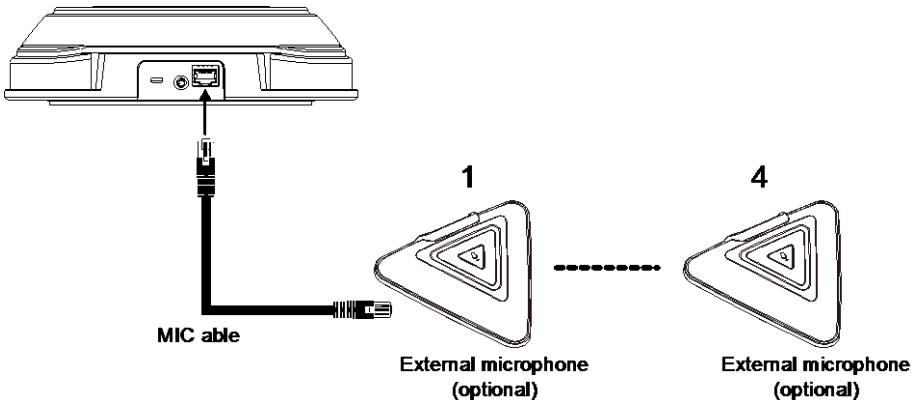
1. Run your video application (Skype™, Microsoft® Lync™, Google Hangout, Cisco WebEx®, GoToMeeting™, WebRTC, and etc.)
2. In your video application, select FONE520 as your audio device.

**[Note]** Accept Skype plug-in notice when FONE520 connect to your laptop.



## External Microphone Connection

FONE520 can support up to 4 external microphone connections.

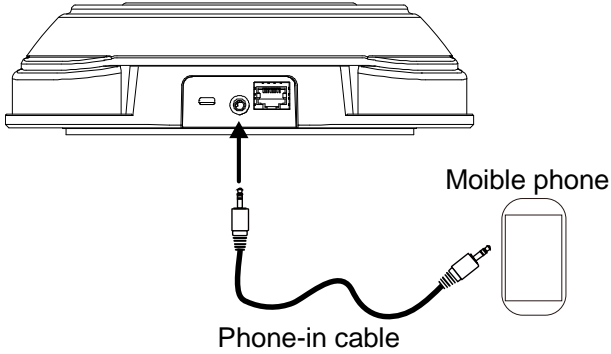



1. Purchase the external microphone pair from your sales dealer. One external microphone box includes 2 external microphones.
2. Use the included microphone cable connecting FONE520 to "MIC out" port on external microphone.
3. External microphones are plug-n-play, no need to configure.

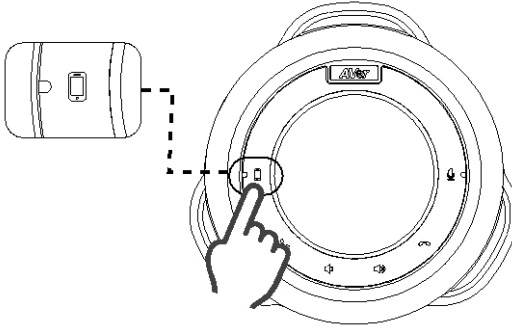
## Phone In

To connect the FONE520 to your mobile phone as a hands free call device.

1. Use the included 3.5mm phone-in cable to connect your mobile device to the "Phone In" jack on the FONE520.



2. Touch phone-in button to tie in mobile phone call environment before first use.
3. When connection is successful, the  indicator will light up.



# AVer PTZApp

## Install AVer PTZApp

Please go to <http://www.averusa.com/video-collaboration/support/downloads.asp> to download the AVer PTZApp. After downloading, double-click on the file and follow the on screen instructions to complete the installation.

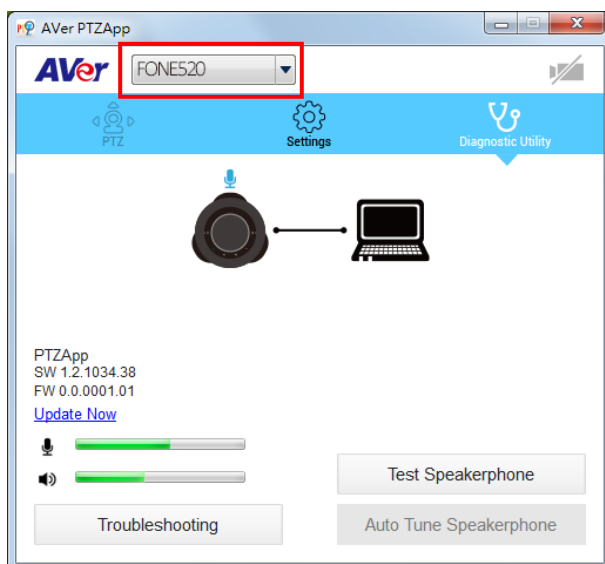
Remember to select the “**Skype plug-in**” option during installation.

After installing the AVer PTZApp, double-click on the AVer PTZApp icon to run the application.

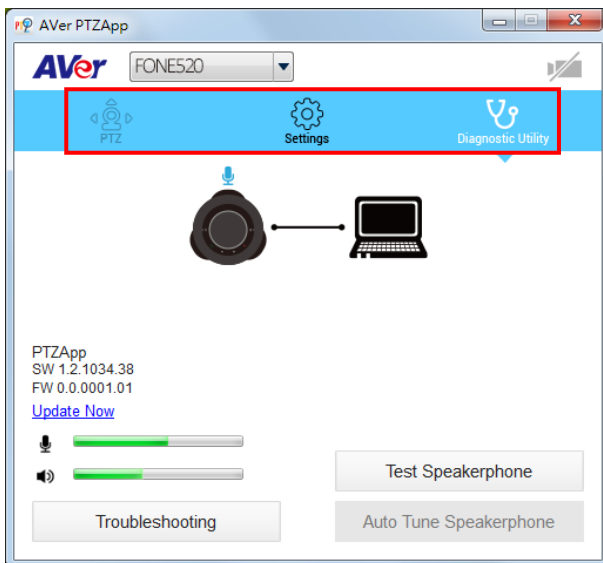
## Use AVer PTZApp

1. Each function will be described as following.

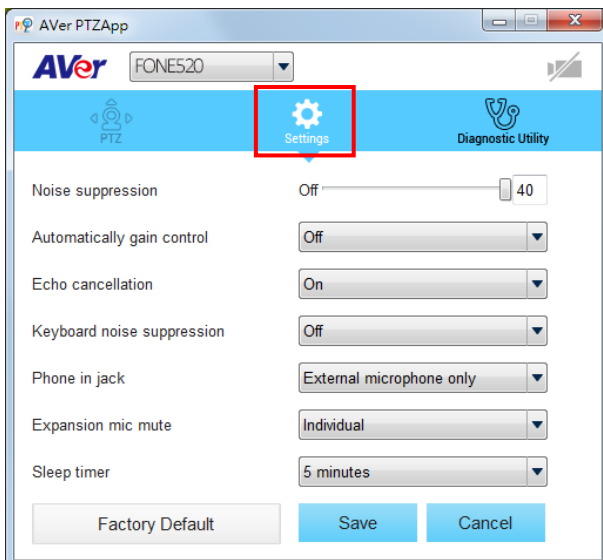
- **Currently selected device:** Displays currently selected current device controlled by PTZApp. If there is more than one AVer FONE, VC, CAM, devices connected to one PC/Mac, you can click on the drop down list to select other AVer FONE, VC, or CAM device.



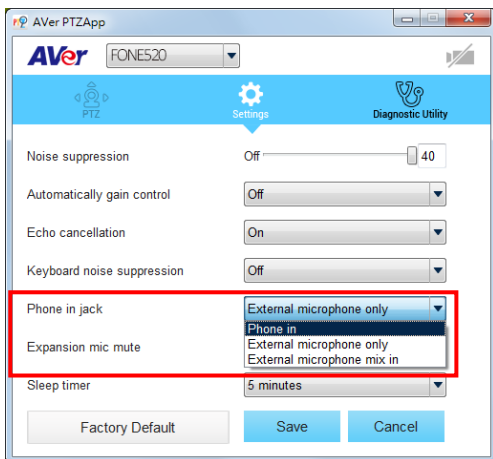
- **Function icon:** Click it to switch to the function's page.



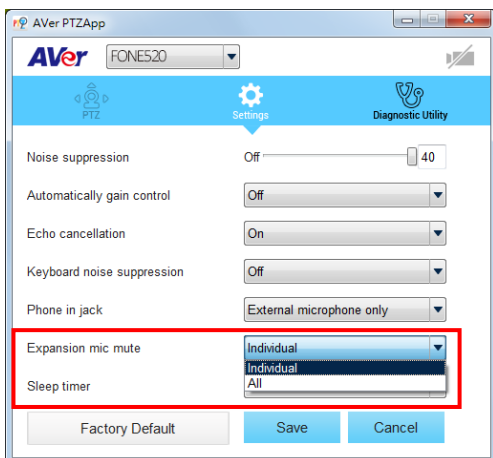
- **PTZ:** This function is not supported for FONE520.
- **Settings:** To setup parameters of the speakerphone – Noise suppression, Automatically gain control, Echo cancellation, Keyboard noise suppression, Phone in jack, Expansion mic mute, and Sleep timer. Click the **Save** button to save all settings. To change all the settings, back to the default values, click the **Factory Default** button.



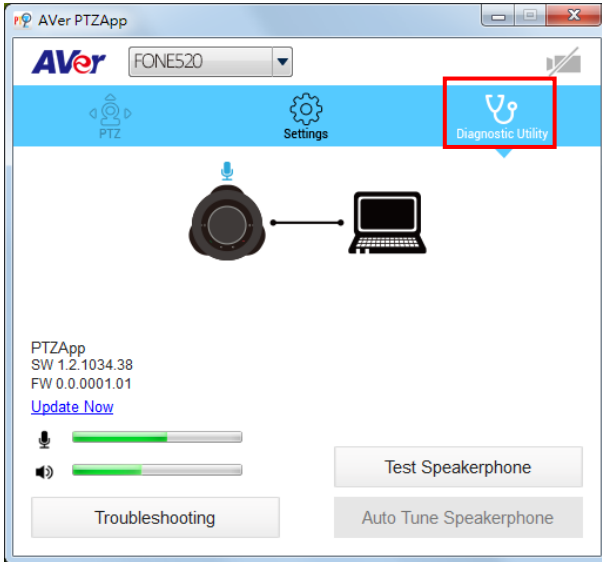
- **Phone in jack:** 3 options – phone in, External microphone only and External microphone mix in. **Phone in** is for mobile connection. **External microphone** means only external microphone can receive and play the voice. **External microphone mix in** means both external microphone and speakerphone (FONE520) can receive and play the voice.



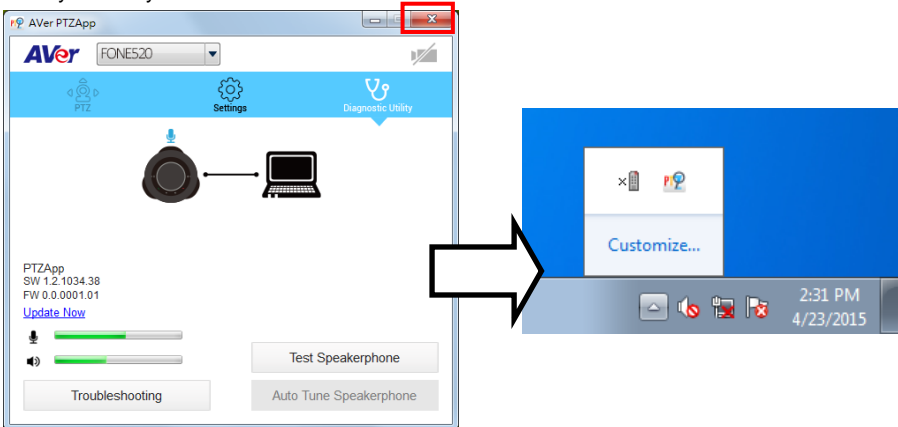
- **Expansion mic mute: Individual** means only external microphone is muted when mute button is pressed. **All** means external microphone and speakerphone (FONE520) both are muted when mute button is pressed.



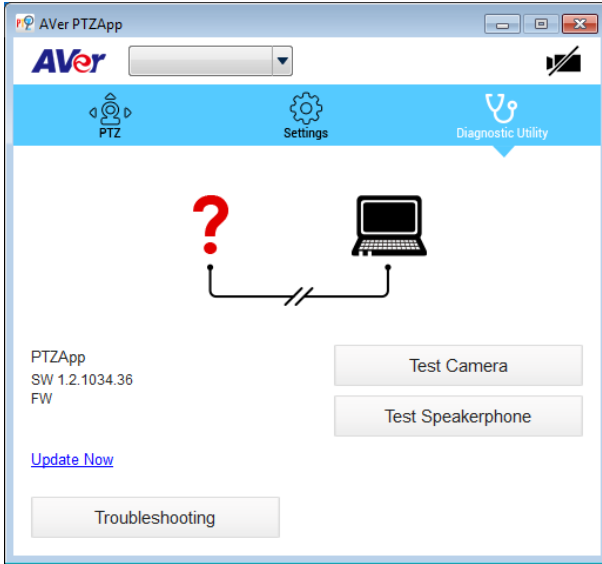
- **Diagnostic Utility:** To display the S/W and F/W version and the devices connection status. Also test the speakerphone status, and update the firmware of the speakerphone.



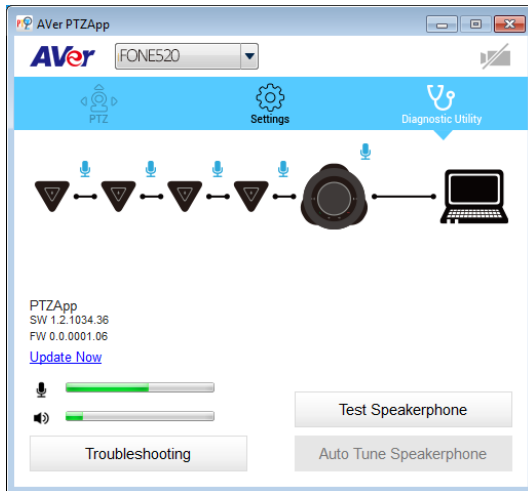
- **Minimize:** Minimize the app to system tray. To quit the application, right-click the icon on the system tray and select "Quit".



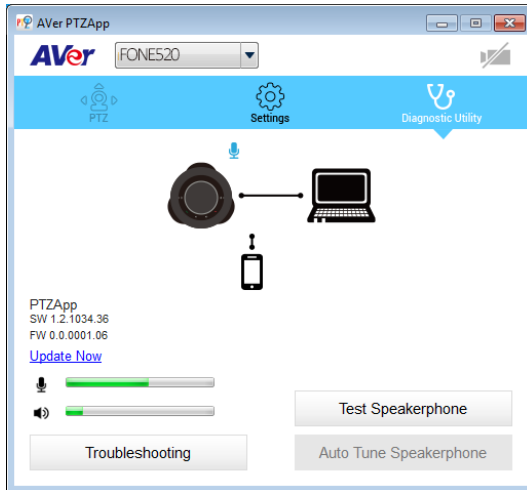
- **Connection diagnostic:** Display devices connection status. If the AVer PTZApp has detected that speakerphone and laptop are not connected well, the diagram will indicate the connection has a problem as below figure shown.



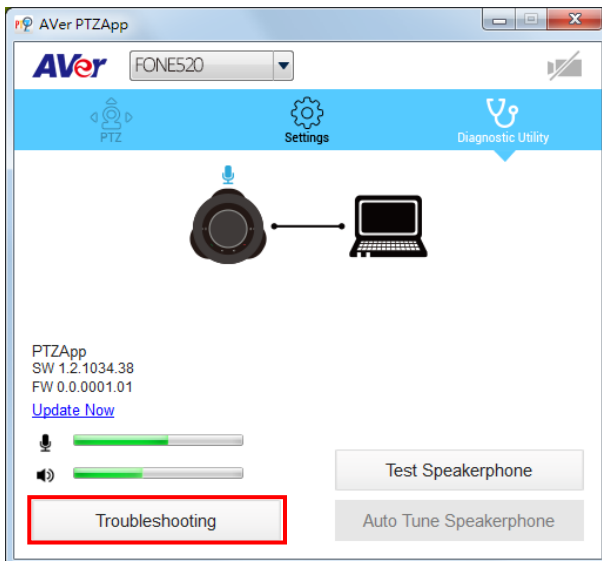
Status diagram for external Microphones are connected with speakerphone:



Status diagram for speakerphone is connected with mobile phone:



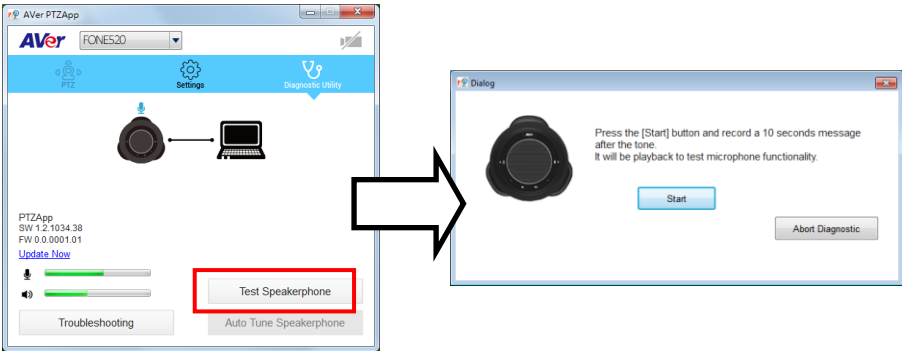
- **Troubleshooting:** collect more system information for troubleshooting before you contact AVer technical support.





## Test Speakerphone

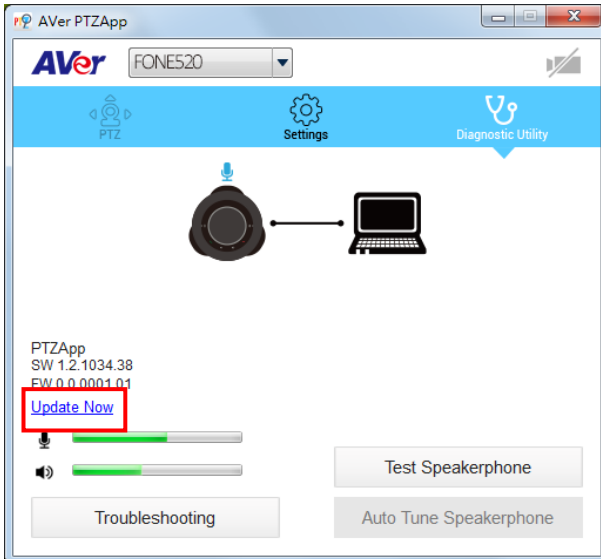
Click to check the speakerphone status. It will require the user to record a short message about 10 secs and will play it back to ensure the speakerphone is working.



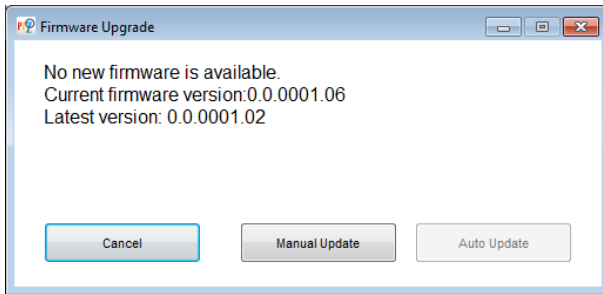
## Update Now

Allows the user to update the speakerphone's firmware.

1. Click" **Update Now**".



2. A dialog will display the current firmware version and available new firmware version (internet connection is required).



3. To auto update, click "**Auto Update**" and update process will start. The new firmware will be downloaded first; then, the new firmware will be uploaded to speakerphone.  
**[Note]** Before updating the new firmware to the camera, please make sure speakerphone and laptop are all well connected and stay connected during the entire process.
4. To update the firmware manually, click "**Manual Update**" and locate the new firmware to start the process.