

# FC1020-P

Cube IP Camera

## Quick User Guide



# **Table of Contents**

Before Installation.....	1
I. Camera Introduction .....	1
1. Package Contents .....	1
2. Hardware Installation.....	2
2.1 Factory Default .....	5
3. SD card Compatibility List.....	6
II. Monitor Setting.....	7
III. IP Assignment.....	8
Finding IP Camera by using “NXU Lite recording software” .....	8
Finding IP Camera by using “AVer IPCam Utility” .....	11
Using NON-DHCP Server/Router Network .....	13
IV. Connecting the IP Camera.....	15
<b>FCC NOTICE (Class A)</b> .....	16
<b>COPYRIGHT</b> .....	16
<b>Limited Warranty</b> .....	17
<b>Governing Law and Your Rights</b> .....	18


# Before Installation

Before installation, please be sure to read this quick installation guide and user's manual carefully to complete the installation.

## I. Camera Introduction

The following section introduces package contents, hardware installation, factory default reset, and SD card Compatibility List of each type camera.

### 1. Package Contents

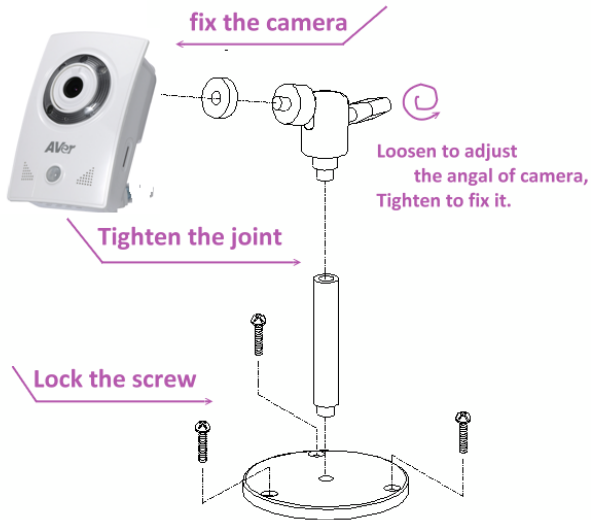
Item	Descriptions
	1. FC1020-P
	2. Bracket
	3. Screw pack
	4. Power Adaptor(DC 12V/0.5A) (Optional)
	5. CD (User's Manual and Quick Guide, NVR software included)

\*\*If any of the above items are missing, please contact your dealer immediately.

## 2. Hardware Installation

### 1. Install with bracket

Please refer to the picture for camera installation. Use the screws to lock the bracket to the wall or ceiling, and then connect the camera to the bracket. There's a knob on the back of the bracket. Loosen the knob and you can adjust the angle of camera. Tighten it to fix the angle.



## 2. Connector Instruction

The camera connectors are as below. Connect the power and the Ethernet cable with the camera, and set it according to your network environment.



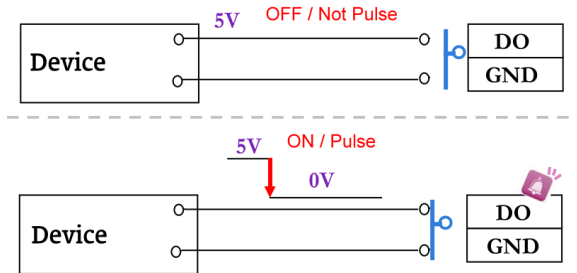
## 3. I/O Configuration

I/O Connection



- a. Please connect the G & DO pin to the external relay (buzzer) device

When no event happens, DO output is 5V (DO and GND are disconnected). When the camera detects event happening and triggers external alarm, DO output is 0V (DO and GND are connected).



- b. Please connect the G & DI pin to the external trigger device.

If you select "N.O" in "Input sensor setting", when external device or circuit makes DI and GND pin connected, the camera input alarm is triggered, and then camera will execute the action user has set, for example, send snapshot to E-mail address.

If you select "N.C" in "Input sensor setting", when external device or circuit makes DI and GND pin disconnected, the camera input alarm is triggered, and then camera will execute the action user has set, for example, send snapshot to E-mail address.

## 2.1 Factory Default

1. To recover the default IP address and password, please follow the following steps.
2. Remove power and Ethernet cable.



3. Press and hold the button and connect power and Ethernet cable to the camera again and hold for round 20 seconds for system booting.
4. Release the button when camera finishes proceed.
5. Re-login the camera using the default IP (<http://192.168.1.168>) or DHCP, and user name (admin), password (admin).

### 3. SD card Compatibility List

FC1020-P is compliant with microSD/SDHC card and to ensure recording quality, and please use the following memory card.

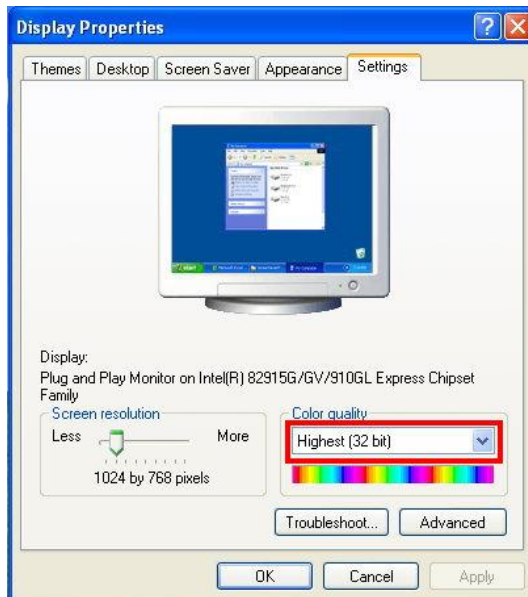
MicroSD/SDHC card
Transcend SDHC class4 32GB
Transcend SDHC class10 64GB
SanDisk SDHC class4 32GB
SanDisk SDHC class10 64GB

## II. Monitor Setting

1. Right-click on the desktop. Select “ **Properties**”



2. Change “Color quality” to “**Highest (32-bit)**”.




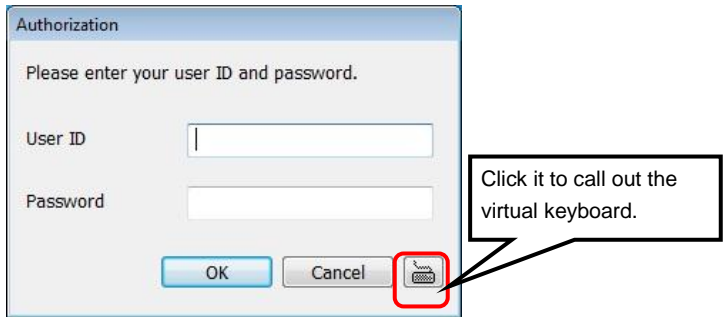
# III. IP Assignment

There are two ways to find IP Cameras:

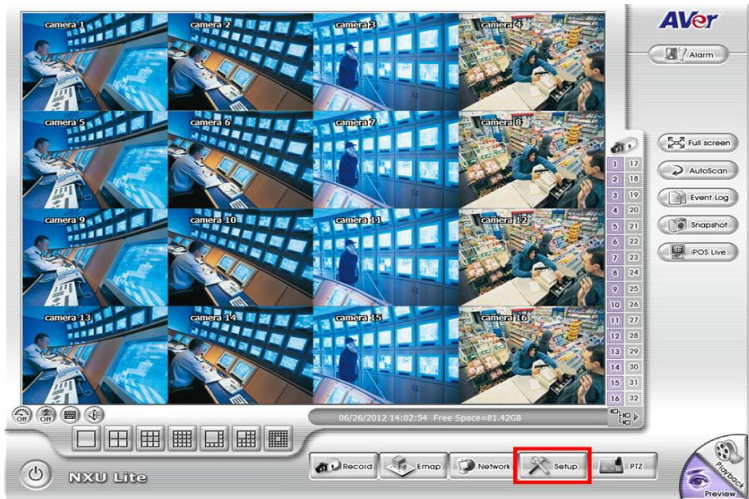
- Finding IP Camera by using the “**NXU Lite recording software**”
- Finding IP Camera by using the “**AVer IPCam Utility**”

## Finding IP Camera by using “NXU Lite recording software”

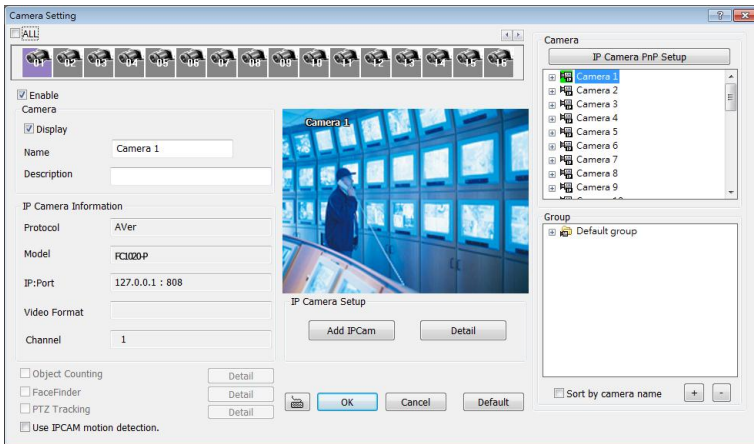
1. The NXU Lite software is in the attached software CD. Before launching it, please install the software first. During the installation process, users will be required to input a User name and Password for login NXU Lite system. Users can define the User name and Password as desired. Please refer to the NXU Lite user manual for detailed installation instructions.
2. To run the application, double-click  on your PC desktop or click **Start > Programs > DVR > NXU Lite**. For security purposes, some of the features require you to enter the User name and Password before it can be accessed. When the Authorization dialog box appears, key in your User ID and Password. (If this is the first time, enter the one you have registered when installing the software.



3. Click the **“Setup”** button.



4. Click the **“Add IPCam”** button.



5. Select **“IP Camera”** item.



6. Enter IP Camera's ID and Password (default is **admin/admin**) and click “**Auto Search**” to find camera.

Auto Search

IP Camera Information  
F/W: 1.1.2.36

Protocol: AVer  
Model: FC1020-P  
Video Format: Auto  
Channel: 1

IP Camera Site: 10.100.91.44 : 80

URL  
http://

Authentication  
ID: admin  
Password: \*\*\*\*\*

Enable Audio

Save & Exit Connect Cancel

7. In the Search Result window, click the IP camera model that the user has purchased (**Please ignore ONVIF connection item**); the camera is in red text that is configurable. Users can double-click on the camera in the red text and configure the IP camera's settings; even if the IP camera is not in the same IP segment. Press “**OK**” to go back to the previous screen and press “**Connect**” to start live view.

Item	Protocol	Model	IP Camera Site
1	AVer	FB3027	10.100.91.44
2	AVer	FX3000-R	10.100.91.44
3	AVer	FC1020-P	10.100.91.44
4	ONVIF	---	http://10.100.91.44:80/onvif/device_service 80

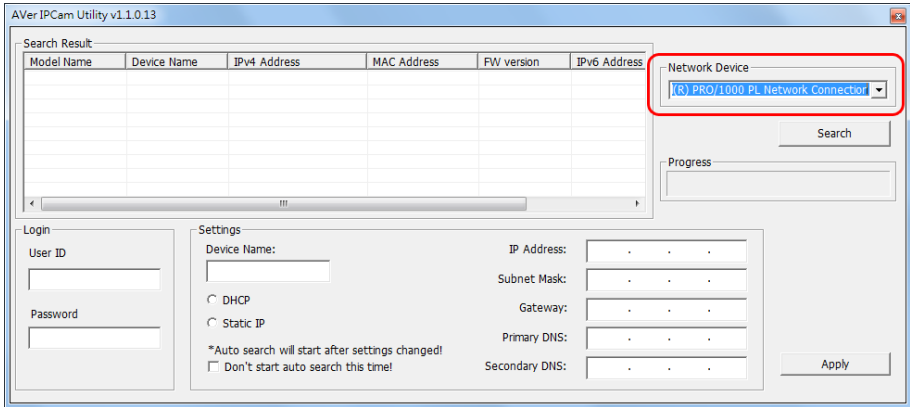
Double-click the IP camera model that user has purchased.

Please ignore ONVIF protocol selection; NXU Lite doesn't support ONVIF connection.

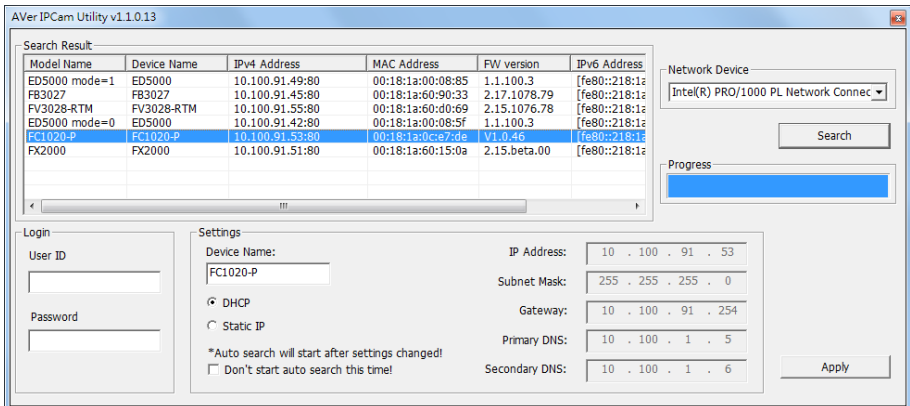
Search OK Cancel

## Finding IP Camera by using “AVer IPCam Utility”

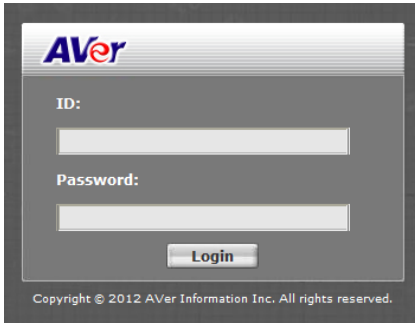
1. Use the software, “**AVer IPCam Utility**” to assign the IP address of the IP camera. The software is in the attached software CD.
2. Run the IPCam Utility
3. Select the proper network adapter and click [Search] to begin searching.



4. Select and double click the IP camera you want to access. If you want to change the setting of the selected IP camera, enter the user ID, correct password, and change the settings and then click **Apply** button. This will change the setting and rescan the network again.



5. The IE browser will open and direct you to IP camera login page. This requires IPViewer.ocx to run. If the IE ActiveX warning message appears, click to allow running the add-on.



Default ID : admin  
Default Password : admin

**[Note]**

- The default IP address is: 192.168.1.168
- The default ID and Password are both "admin".
- You can't enter a device name in Chinese or any other special characters (' " \ & ^).
- Gateway number can't be "0".
- IP camera device name should be less than 30 digits

## Using NON-DHCP Server/Router Network

In Non-DHCP server/router network, the static IP address must be assigned to the device each time when adding another IP camera to the network; the default IP address of the current one must be changed to avoid conflict.

Please make sure the Subnet of the PC's IP address and the IP camera's IP address are the same.

### [Example]

#### The same Subnet:

IP camera IP address: 192.168.1.168

PC IP address: 192.168.1.100

#### Different Subnets:

IP camera IP address: 192.168.1.168

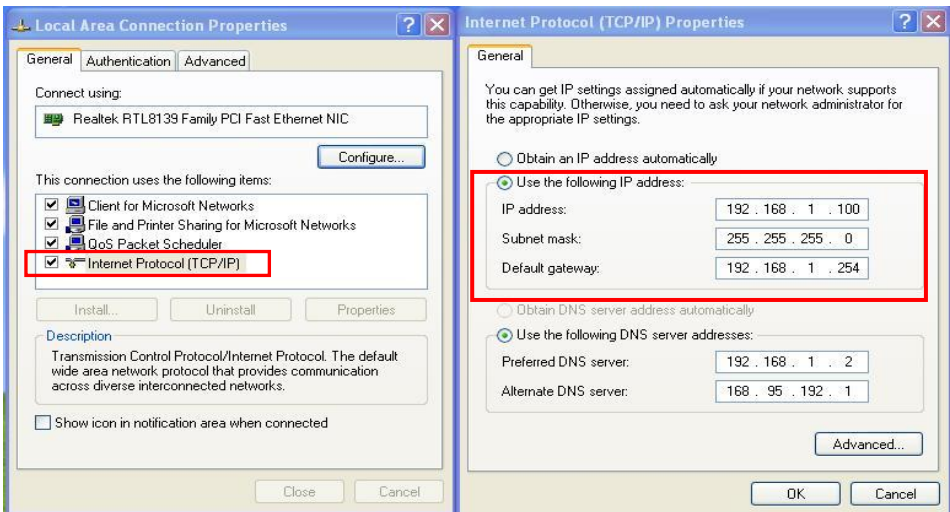
PC IP address: 192.168.2.100

#### To Change PC IP Address:

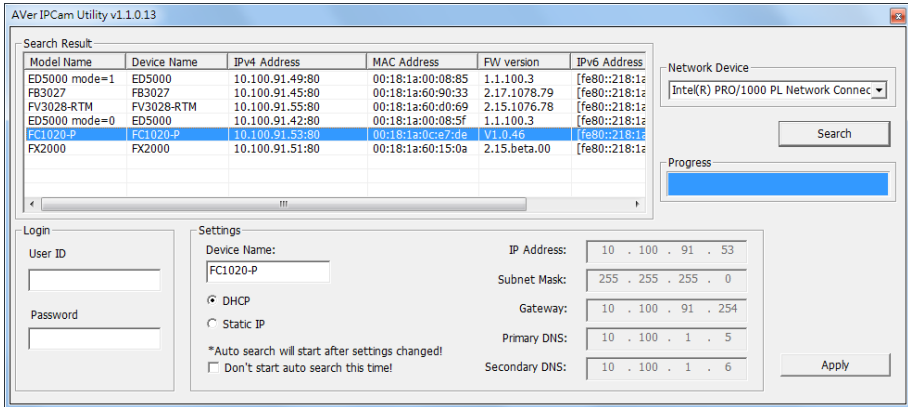
Control Panel→Network Connections→Local Area Connection Properties→Internet Protocol (TCP/IP) →Properties

Please make sure your IP camera and PC have the same Subnet. If not, please change IP camera subnet or PC IP subnet accordingly.

### PC's IP address:

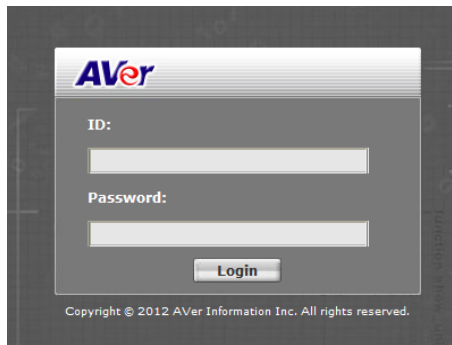


## IP camera IP addresses:



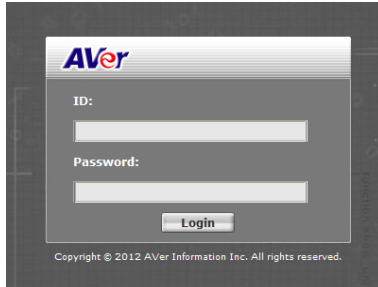
A quick way to access remote monitoring is to double-click on a selected IP camera in “Camera Name list” in AVer IPCam Utility. Then, the IE browser will open and connect to IP camera.

Then, please key in the default “ID” and “Password”, both of which are “admin”.



## IV. Connecting the IP Camera

Launch the Internet Explorer browser, type the IP address of the IP camera in the address field. It will show the following dialogue box. Key-in the "ID" and "Password". The default "ID" and "Password" are both "admin".



Once connected to the IP camera, the following program interface will appear.



## FCC NOTICE (Class A)



This device complies with Part 15 of the FCC Rules. Operation is subject to the following two conditions: (1) this device may not cause harmful interference, and (2) this device must accept any interference received, including interference that may cause undesired operation.

### Federal Communications Commission Statement

**NOTE-** This equipment has been tested and found to comply with the limits for a Class A digital device, pursuant to Part 15 of the FCC Rules. These limits are designed to provide reasonable protection against harmful interference in a residential installation. This equipment generates uses and can radiate radio frequency energy and, if not installed and used in accordance with the instructions, may cause harmful interference to radio communications. However, there is no guarantee that interference will not occur in a particular installation. If this equipment does cause harmful interference to radio or television reception, which can be determined by tuning the equipment off and on, the user is encouraged to try to correct the interference by one or more of the following measures:

- Reorient or relocate the receiving antenna.
- Increase the separation between the equipment and receiver.
- Connect the equipment into an outlet on a circuit different from that to which the receiver is connected.
- Consult the dealer or an experienced radio/television technician for help.

### Class A ITE

Class A ITE is a category of all other ITE which satisfies the class A ITE limits but not the class B ITE limits. Such equipment should not be restricted in its sale but the following warning shall be included in the instructions for use:

**Warning** -This is a class A product. In a domestic environment this product may cause radio interference in which case the user may be required to take adequate measures.

### European Community Compliance Statement (Class A)



This product is herewith confirmed to comply with the requirements set out in the Council Directives on the Approximation of the laws of the Member States relating to Electromagnetic Compatibility Directive 2004/108/EC.

**Warning** - This is a Class A product. In a domestic environment this product may cause radio interference in which case the user may be required to take adequate measures to correct this interference.

### COPYRIGHT

©2014 AVer Information Inc. All rights reserved.

All rights of this object belong to AVer Information Inc. Reproduced or transmitted in any form or by any means without the prior written permission of AVer Information Inc. is prohibited. All information or specifications are subject to change without prior notice.

### TRADEMARKS

“AVer” is a trademark owned by AVer Information Inc. Other trademarks used herein for description purpose only belong to each of their companies.

### NOTICE

SPECIFICATIONS ARE SUBJECT TO CHANGE WITHOUT PRIOR NOTICE. THE INFORMATION CONTAINED HEREIN IS TO BE CONSIDERED FOR REFERENCE ONLY.

## WARNING

TO REDUCE RISK OF FIRE OR ELECTRIC SHOCK, DO NOT EXPOSE THIS APPLIANCE TO RAIN OR MOISTURE. WARRANTY VOID FOR ANY UNAUTHORIZED PRODUCT MODIFICATION.



THE MARK OF CROSSED-OUT WHEELED BIN INDICATES THAT THIS PRODUCT MUST NOT BE DISPOSED OF WITH YOUR OTHER HOUSEHOLD WASTE. INSTEAD, YOU NEED TO DISPOSE OF THE WASTE EQUIPMENT BY HANDING IT OVER TO A DESIGNATED COLLECTION POINT FOR THE RECYCLING OF WASTE ELECTRICAL AND ELECTRONIC EQUIPMENT. FOR MORE INFORMATION ABOUT WHERE TO DROP OFF YOUR WASTE EQUIPMENT FOR RECYCLING, PLEASE CONTACT YOUR HOUSEHOLD WASTE DISPOSAL SERVICE OR THE SHOP WHERE YOU PURCHASED THE PRODUCT.

## Limited Warranty

AVer Information, Inc. (“AVer”) warrants that the applicable product (“Product”) substantially conforms to AVer’s documentation for the product and that its manufacture and components are free of defects in material and workmanship under normal use. “You” as used in this agreement means you individually or the business entity on whose behalf you use or install the product, as applicable. This limited warranty extends only to You as the original purchaser. Except for the foregoing, the Product is provided “AS IS.” In no event does AVer warrant that You will be able to operate the Product without problems or interruptions, or that the Product is suitable for your purposes. Your exclusive remedy and the entire liability of AVer under this paragraph shall be, at AVer’s option, the repair or replacement of the Product with the same or a comparable product. This warranty does not apply to (a) any Product on which the serial number has been defaced, modified, or removed, or (b) cartons, cases, batteries, cabinets, tapes, or accessories used with this product. This warranty does not apply to any Product that has suffered damage, deterioration or malfunction due to (a) accident, abuse, misuse, neglect, fire, water, lightning, or other acts of nature, commercial or industrial use, unauthorized product modification or failure to follow instructions included with the Product, (b) misapplication of service by someone other than the manufacturer’s representative, (c) any shipment damages (such claims must be made with the carrier), or (d) any other causes that do not relate to a Product defect. The Warranty Period of any repaired or replaced Product shall be the longer of (a) the original Warranty Period or (b) thirty (30) days from the date of delivery of the repaired or replaced product.

## Limitations of Warranty

AVer makes no warranties to any third party. You are responsible for all claims, damages, settlements, expenses, and attorneys’ fees with respect to claims made against You as a result of Your use or misuse of the Product. This warranty applies only if the Product is installed, operated, maintained, and used in accordance with AVer specifications. Specifically, the warranties do not extend to any failure caused by (i) accident, unusual physical, electrical, or electromagnetic stress, neglect or misuse, (ii) fluctuations in electrical power beyond AVer specifications, (iii) use of the Product with any accessories or options not furnished by AVer or its authorized agents, or (iv) installation, alteration, or repair of the Product by anyone other than AVer or its authorized agents.

## **Disclaimer of Warranty**

Except as expressly provided otherwise herein and to the maximum extent permitted by applicable law, aver disclaims all other warranties with respect to the product, whether express, implied, statutory or otherwise, including without limitation, satisfactory quality, course of dealing, trade usage or practice or the implied warranties of merchantability, fitness for a particular purpose or noninfringement of third party rights.

## **Limitation of Liability**

In no event shall aver be liable for indirect, incidental, special, exemplary, punitive, or consequential damages of any nature including, but not limited to, loss of profits, data, revenue, production, or use, business interruption, or procurement of substitute goods or services arising out of or in connection with this limited warranty, or the use or performance of any product, whether based on contract or tort, including negligence, or any other legal theory, even if aver has advised of the possibility of such damages. Aver's total, aggregate liability for damages of any nature, regardless of form of action, shall in no event exceed the amount paid by you to aver for the specific product upon which liability is based.

## **Governing Law and Your Rights**

This warranty gives you specific legal rights; You may also have other rights granted under state law. These rights vary from state to state.