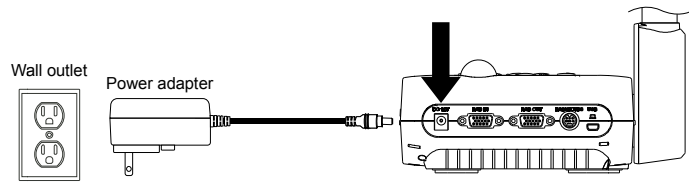


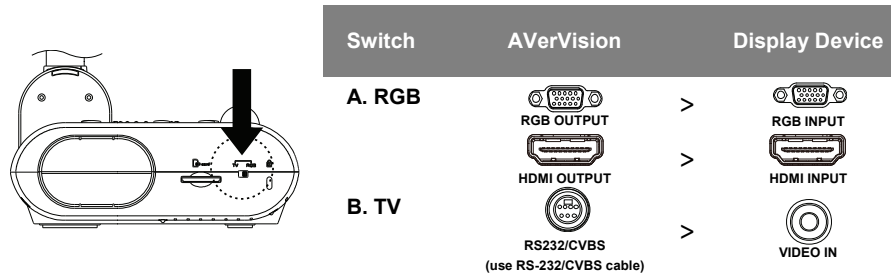
AVerVision F50HD

Quick Guide

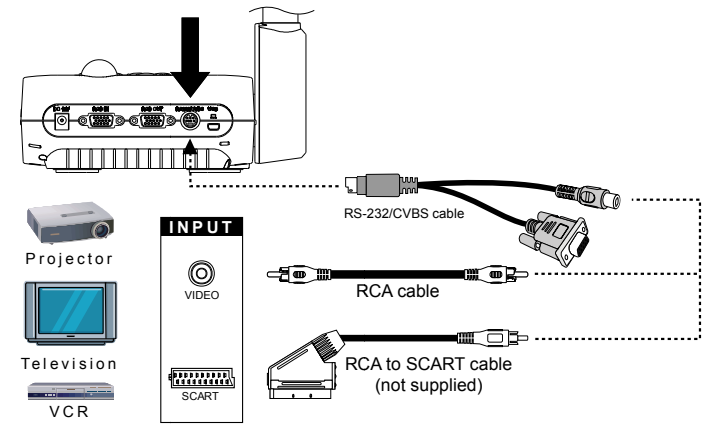
(1)



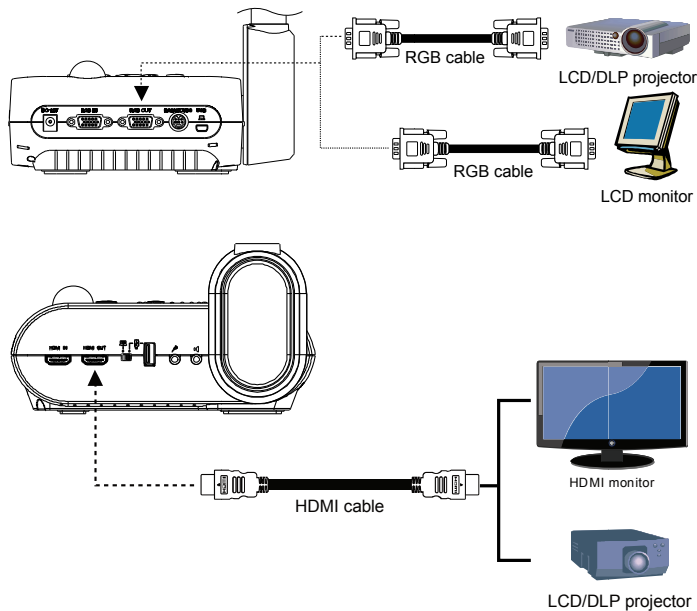
(2)



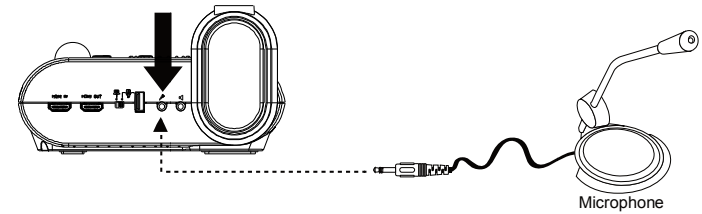
(3-B)



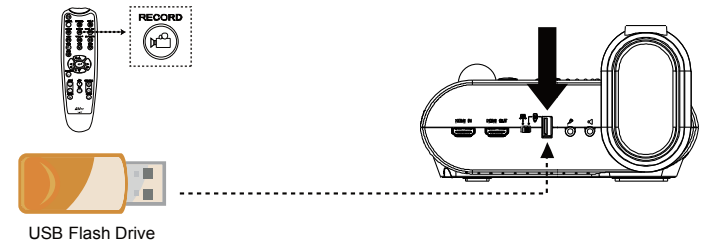
(3-A)



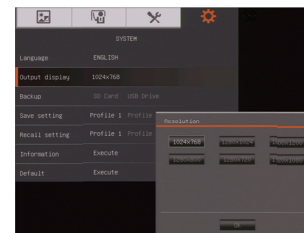
(4)



(5)



(6)

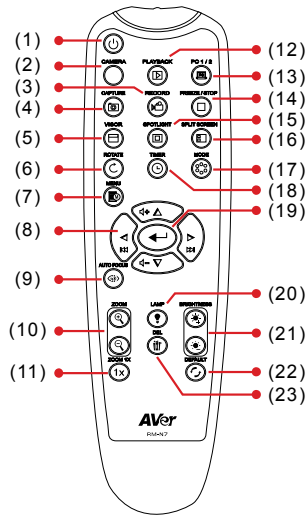


Output Display

Set the resolution to display the image on screen. This selection will be disabled in TV output mode.

Remote Control

The remote control requires two (2) "AAA" size batteries (supplied), make sure batteries are installed properly before use.



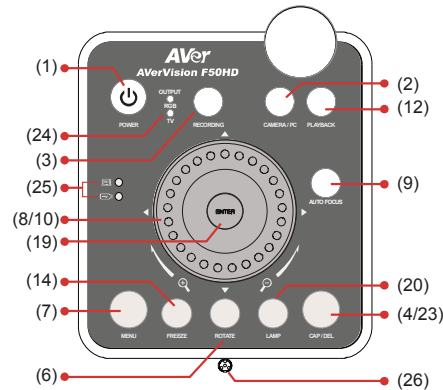
| Name | Function |
|--------------------|---|
| (1) POWER | Turn the unit on/standby. |
| (2) CAMERA | Camera mode displays the video signal from the built-in camera. |
| (3) RECORDING | Start/Stop audio & video recording. Video recording can only be saved either in a SD memory card or a USB flash drive. |
| (4) CAPTURE | Capture still image in Camera mode. In continuous capture mode, press this button again to stop. |
| (5) Visor | Cover part of the presentation screen and allow presenter to reveal the material as desire. |
| (6) ROTATE | Rotate the image by 90° in Camera mode and Playback mode. |
| (7) MENU PIP | Open and exit the OSD menu. Show a thumbnail size captured picture/video from the memory at the corner of the screen in Camera mode. |
| (8) ▲, ▼, ◀, & ▶ | <ul style="list-style-type: none"> - Pan the image when image is above 10X zoom in live mode or in playback captured image mode. - Move the selection in Playback mode and in OSD menu. - Use ▲& ▼ to increase and decrease the video playback volume. - Use ◀& ▶ to play the video backward and forward. - Move the Spotlight frame and Visor screen cover. |
| (9) AUTO FOCUS | Adjust the focus automatically. |
| (10) ZOOM +/- | <ul style="list-style-type: none"> - Increase/decrease the image magnification in camera and picture playback mode. - Use to easily page up and page down 16-thumbnail picture preview. |
| (11) ZOOM RESET | Reset zoom level to 100%. |
| (12) PLAYBACK | View the captured picture/video from the memory in 16-thumbnail images. |
| (13) PC 1/2 | PC mode displays the video signal from the RGB INPUT port of F50HD. |
| (14) FREEZE / STOP | <ul style="list-style-type: none"> - Freeze live images. - Stop video playback. |
| (15) SPOTLIGHT | Call the Spotlight submenu. Spotlight overlays a box frame on the presentation screen. You can adjust the box size and move it around. |



A PDF version of our Reference Manual is available for download from the following link:

<http://www.averusa.com/presentation/support.asp>

| Name | Function |
|---------------------|---|
| (16) SPLIT SCREEN | Divide the screen into two. One side displays the live image from the built-in camera and the other side displays 8-thumbnail size picture/video from the memory. |
| (17) MODE | Select from 6 type of modes: Sharp - adjust the contrast along the edges making text appear more visible. Graphics - adjust the gradient of image. Motion - increase frame rate. Sufficient lighting is required when using this mode. Microscope - automatically adjust optical zoom for microscopic viewing. *Macro - set to view when object is only 5 – 20 cm away from the camera. *Infinite - set to view when subject is at least 55cm away from the camera. |
| (18) TIMER | Start/Pause/Stop the timer countdown and set the timer duration. |
| (19) ⏪ | <ul style="list-style-type: none"> - Make a selection in Playback mode and OSD menu. - Play/Pause video playback |
| (20) LAMP | Turn the overhead light on/off. |
| (21) BRIGHTNESS +/- | Adjust the brightness. |
| (22) DEFAULT | Reset at factory default setting. |
| (23) DEL | Delete the selected picture/video in Playback mode. |



| Name | Function |
|---------------------|---|
| (24) OUTPUT LED | Indicate the TV-RGB switch selection to which port the video signal is sent out. |
| (25) USB Switch LED | Indicate the USB switch selection to which USB port is activated. |
| (26) Built-in MIC | Record audio when recording video clip. The recorded sound will be in monophonic. |