

# AVer DVR/NVR

+

## SF2012H/SF2111H series IP Cameras

### Quick Installation Guide



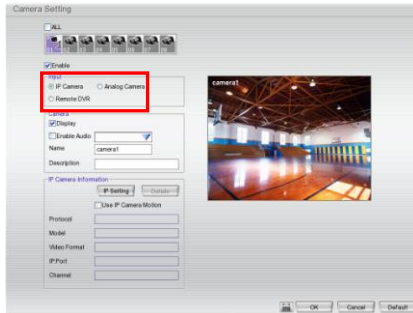
1. Connects the IP camera to switch/hub and power on first.
2. Make sure the IP camera is in factory default setting. Please refer to IP camera's user manual for resetting factory default.
3. The switch/hub is that connects with IP camera and DVR/NVR, please turn off DHCP function if switch/hub has enabled before.

AVer DVR/NVR can connect up to 4 IP cameras through the LAN network connection and without any configuration.

The following lists are supported DVR, NVR, and IP camera:

<b>DVR</b>	4/8/16CH EH Nano/Nano <sup>+</sup> series
<b>NVR</b>	EXR6004 mini
<b>IP Camera</b>	SF2012H series, SF2111H series

1. For 4/8/16CH EH Nano/Nano<sup>+</sup> series DVR, please do the pre-configuration on the channel that is going to connect the IP camera.
2. Power on the DVR unit and login the DVR system. Next, select **Setup >> Camera** in preview mode.
3. In Camera setting, select the channel that wants to connect IP camera and mark the **Enable** to enable the channel, then, select the camera **Input** is **IP camera**. Then, click **OK** to save the configuration.

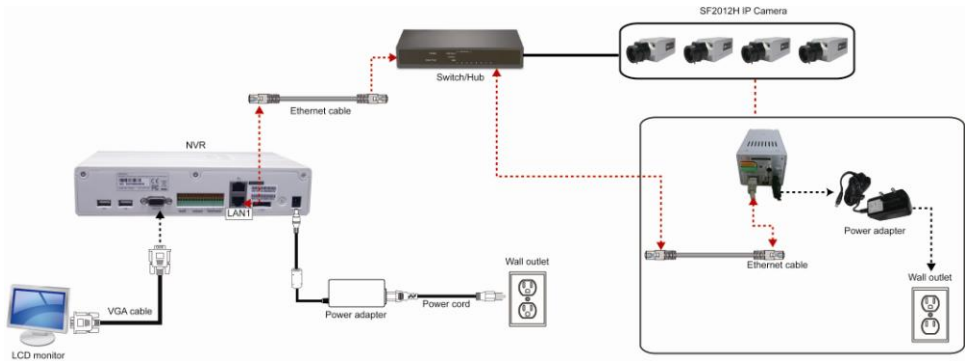


4. After pre-configuration completed, turn the DVR unit power off.



- EXR6004 mini please skip the step 1~4.
- The 4/8/16CH EH Nano/Nano+ DVR only support first 4 channels for IP camera connection.

5. Please refer to figure to connect all devices or components. In figure, we use the EXR6004 min and SF2012H IP camera as an example.



6. After connecting all devices or components, power on the IP camera first.
7. Next, power on the DVR/NVR unit. Then, DVR/NVR will start to search and detect the SF2012H series/SF2111H series IP camera on your LAN network.
8. When user sees the video on surveillance monitor, it means DVR/NVR and IP camera has completed connection.