

A+ Suite

User Manual



COPYRIGHT

©2016 AVer Information Inc. All rights reserved.

All rights of this object belong to AVer Information Inc. Reproduced or transmitted in any form or by any means without the prior written permission of AVer Information Inc. is prohibited. All information or specifications are subject to change without prior notice.

TRADEMARKS

“AVer” is a trademark owned by AVer Information Inc. Other trademarks used herein for description purpose only belong to each of their companies.

DISCLAIMER

No warranty or representation, either expressed or implied, is made with respect to the contents of this documentation, its quality, performance, merchantability, or fitness for a particular purpose. Information presented in this documentation has been carefully checked for reliability; however, no responsibility is assumed for inaccuracies. The information contained in this documentation is subject to change without notice.

In no event will AVer Information Inc. be liable for direct, indirect, special, incidental, or consequential damages arising out of the use or inability to use this product or documentation, even if advised of the possibility of such damages.

Contents

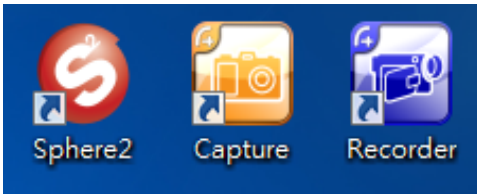
OVERVIEW	1
MINIMUM SYSTEM REQUIREMENTS.....	2
USING SPHERE2	3
Overview.....	3
To change the user interface language	4
Classes.....	5
Create a class	6
Edit the class.....	7
Add student in the class	8
To change the student profile and picture.....	9
Class Interactivity.....	12
Option Function	18
To configure the video recording setting.....	19
To configure the capture setting	19
To use the auto adjust function.....	20
To configure WirelessCam setting.....	20
To configure file upload setting.....	21
MediaLibrary	22
To compare images with the live image from the visualizer.....	23
To upload images form medialibrary	24
Upload	26
To login and save your information in options	27
To login and save your information in options(Dropbox).....	28
To upload without saving your information	30
Camera Setting.....	31
To set up TabCam using the QR Code	31

FW Upgrade.....	33
Check for Update.....	36
Check for update.....	36
A+ PLUG-IN FOR POWERPOINT	38
Overview.....	38
Visor	39
To add and set the visor setting in the slide.....	39
Spotlight.....	41
To add and set the spotlight setting in the slide.....	41
To resize the spotlight.....	43
To move the spotlight	44
To change the spotlight shape.....	44
Capture	46
To use the capture.....	46
Record	47
To use the recorder	47
Visualizer	48
Voting.....	51
To create slide questionnaire.....	52
To get sample question file.....	54
To import question.....	56
To start the voting.....	58
To use the voting box	60
Game Editor.....	61
To customize the English game.....	61
To update geographic game.....	65
To update math game	65
Option	66
Check for Update	67

To check for update.....	67
A+ PLUG-IN FOR WORD	69
Overview.....	69
Capture.....	70
To use the capture.....	70
Option	71
CHECK FOR UPDATE	72
To check for update.....	72
A+ PLUG-IN FOR EXCEL.....	74
Overview.....	74
Check for Update.....	75
To check for update.....	75
FLOATING TOOLBOX.....	77
Main Toolbox.....	78
ANNOTATION	78
To change the color of the line and shape.....	78
To delete line and shape	78
Teaching tool.....	79
To extend the ruler	79
To use the protractor	80
To use the text to speech	81
AVerVision Flash Plug-in.....	82

Overview

Welcome to A+ Suite software. This software is the intellectual proprietary of AVer Information Inc. You can use the other 3 independent programs in A+ Suite software. These are the Sphere2, Capture and Recorder. With the new user interface of Sphere2, it now gives you more ease of use in navigating the tools you need in showing your live video presentation. As for the Capture and Recorder, you can capture the screen in 3 ways: full screen, window and area, and record video in 2 ways: full screen and area.



In addition, it comes with the A+ Plug-in for PowerPoint add-ins which allows you to enhance your PowerPoint presentation by inserting the Sphere2 video screen in your slide presentation and showing live video demo from your visualizer in slide show mode. While in PowerPoint slide show presentation mode, you can access many interesting features added in the Floating toolbox. Wherein, you can annotate on your presentation with straight/freeform lines, highlighter pen, add different shapes, record presentation in video or capture screen shot of your presentation.

We also provide some of the functions in Word and Excel. In Word, you can also use our A+ Suite software by inserting the Sphere2 video screen in your documents.



Minimum System Requirements

For Win 7 / Win 8 / Win10

- Intel Core 2 Duo 2.00GHz or later
- 1 GB of RAM (2 GB recommended)
- 1024 x 768 or higher resolution display
- DirectX 9.0c compatible video card
- 900 MB free hard disk space for basic installation
- Microsoft PowerPoint 2007 or 2010 (32-bit) for A+ Plug-in for PowerPoint
- CD-ROM and USB 1.1 or above for AVer visualizer connection

For Mac OS v10.9 / v10.10

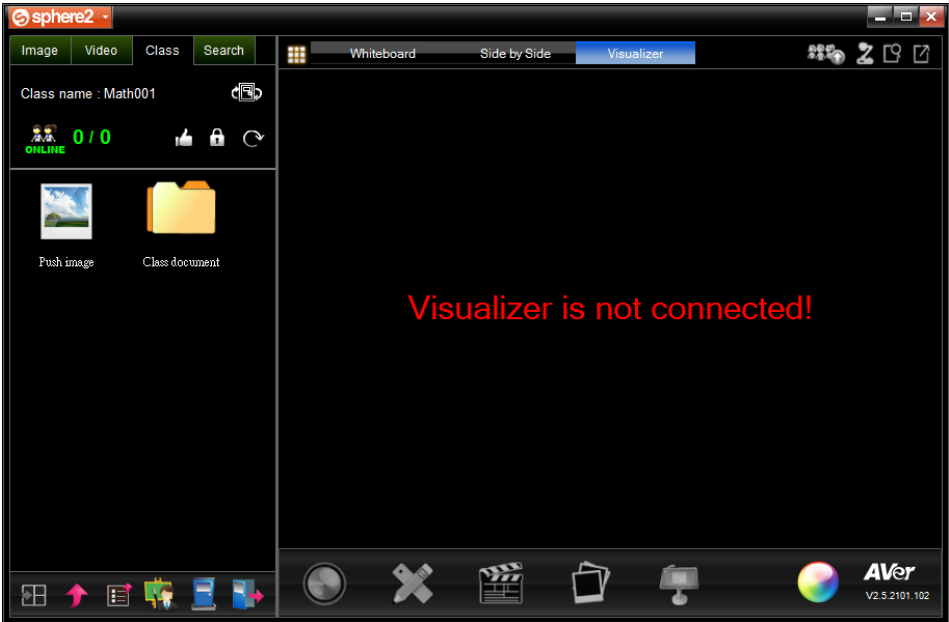
- Intel Core Duo 1.86GHz or later x86 processor (Intel Core 2 Duo 2.00 GHz recommended)
- 1 GB of RAM (2 GB recommended)
- 1024 x 768 or higher resolution display
- 900 MB free hard disk space for basic installation
- Microsoft PowerPoint 2007 or 2010(32-bit) for A+ Plug-in for PowerPoint
- CD-ROM and USB 1.1 or above for AVer visualizer connection




Using Sphere2

The following sections will describe each function of Shpere2.

Overview

Sphere2 is the perfect software tool you can use with your AVer visualizer for actual interactive visual learning and demonstration. With the new user interface design, you can easily navigate and familiarized with the tools.



	Adjust the video image display of the AVer visualizer. You can zoom in and out, pause and resume the video streaming, rotate, and adjust the image brightness, contrast, white balance, manually adjust the focus, change video effect and display mode.
	Use to draw straight line, freeform line, highlight transparent line, and shape on the Sphere2 video screen.
	Record the image from the AVer visualizer into video format.



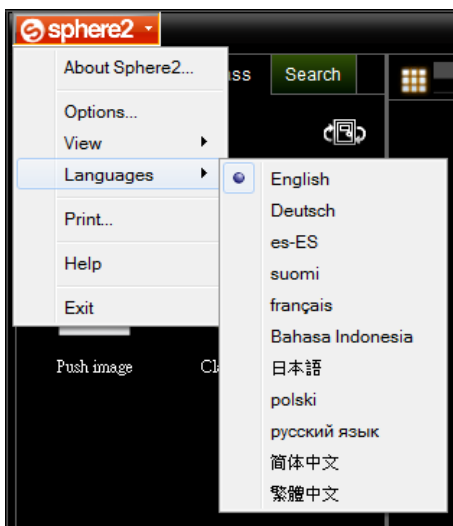
Capture the image from the AVer visualizer into image format.



Use to scan and read text displayed on AVer visualizer. You can also use teaching tools like spotlight and visor.

To change the user interface language

Click Sphere2 > Languages > and select the language.








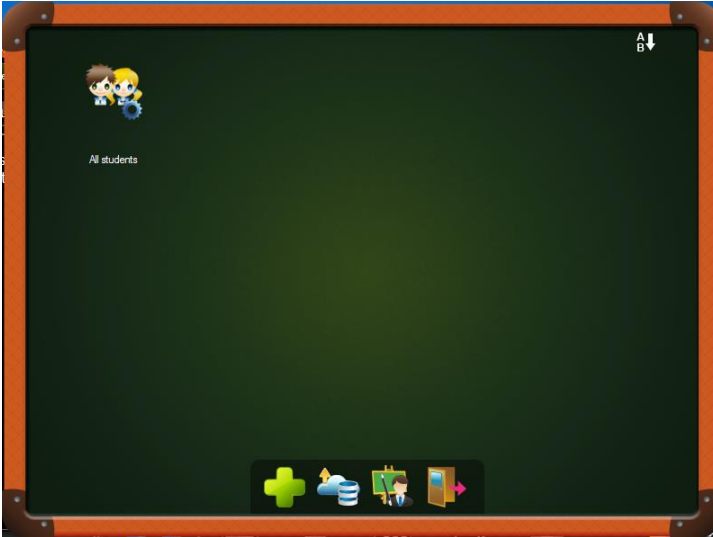
Classes

This intuitive program allows teacher to create student database per class, monitor and keep track of the student performance, add remarks, recognize students with their photos and backup copy of all the class data.

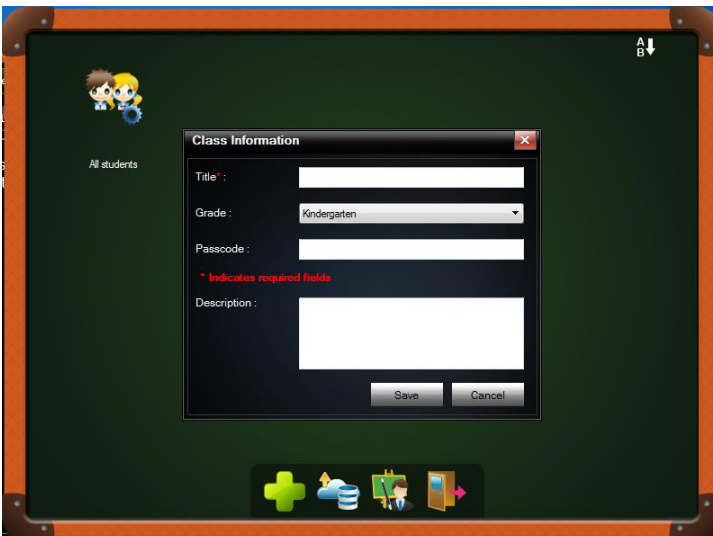


Create a class


1. Click  icon to open the class.
2. In class window, click  to open a class. Click  to cloud storage.
Click  to save teacher's profile data. Click  to exit class window.

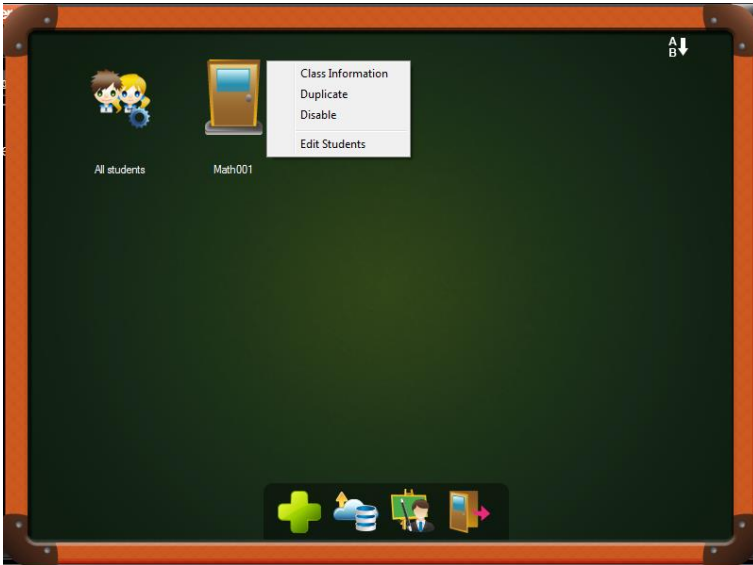


Enter the Title (class name), Grade, Passcode(for login class), and Description. The items with * are required to enter. Click **Save** to save the class.

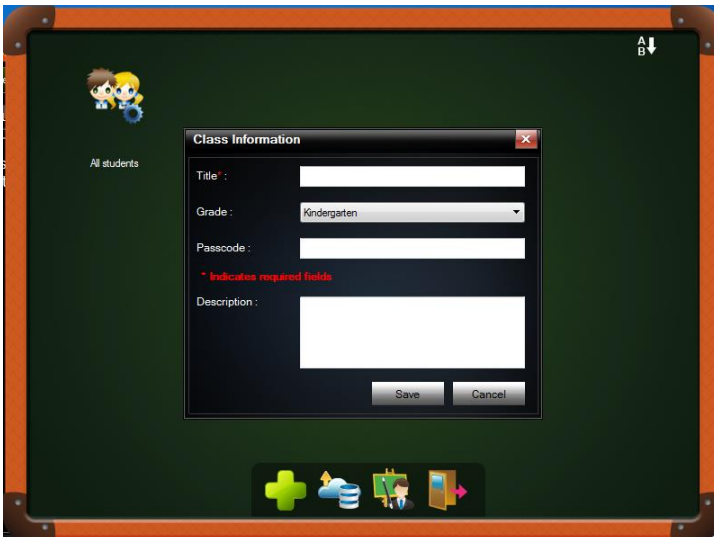


Edit the class


1. Click  the class you want to edit.
2. Select [**Class Information**] to edit the class, [**Duplicate**] to make another copy of the class, [**Disable**] to move the class in disabled list, and [**Edit Student**] to add students into this class.

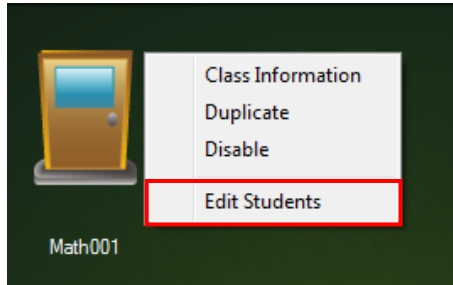



3. Edit the data in the Class Information dialog box and click [**Save**].

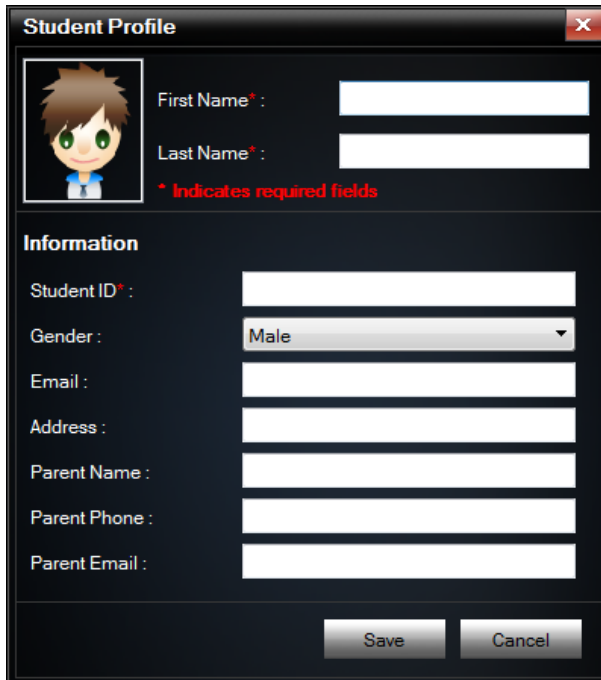


Add student in the class

1. Click  the class you want to add student.
2. Select [**Edit Students**] in the drop down list.




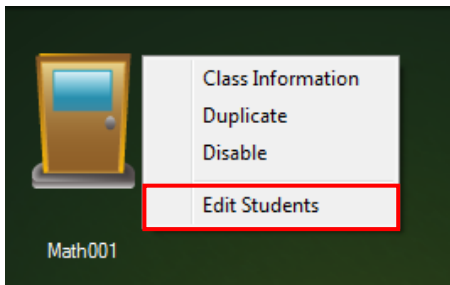
3. Click  and enter the student information.


A screenshot of a 'Student Profile' form window. The window has a title bar with 'Student Profile' and a close button. On the left is a placeholder image of a cartoon boy. To the right are two text input fields labeled 'First Name*' and 'Last Name*'. Below these is a red asterisk with the text '* Indicates required fields'. Under the heading 'Information', there are several input fields: 'Student ID*', 'Gender' (a dropdown menu currently showing 'Male'), 'Email', 'Address', 'Parent Name', 'Parent Phone', and 'Parent Email'. At the bottom right of the form are two buttons: 'Save' and 'Cancel'.

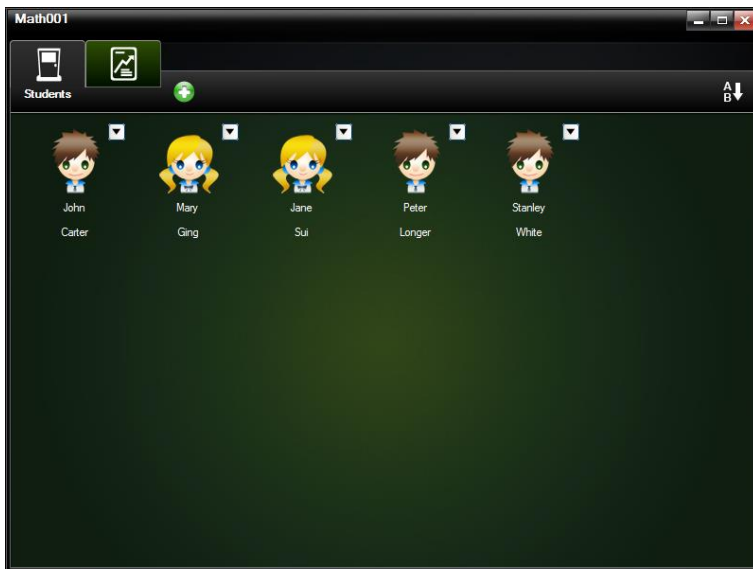
4. Click [**Save**].

To change the student profile and picture

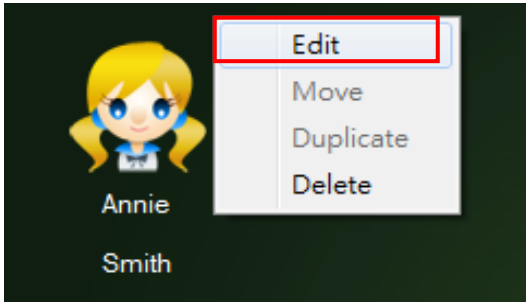
1. Click  of the class you want to edit the student profile and picture.
2. Select [**Edit Students**] in the drop down list.



3. In the student tab, click  of the student you want to edit the profile and picture.




4. Click [**Edit**] to change the student profile, [**Move**] to transfer the student profile to a different class,
5. [**Duplicate**] to make copy of the student profile, and [**Disable**] to move the student profile in disabled list.



6. Edit the information in the Student Profile dialog box.
7. To change the student profile picture, double-click the picture frame.

Student Profile [X]


 First Name* : Annie
Last Name* : Smith

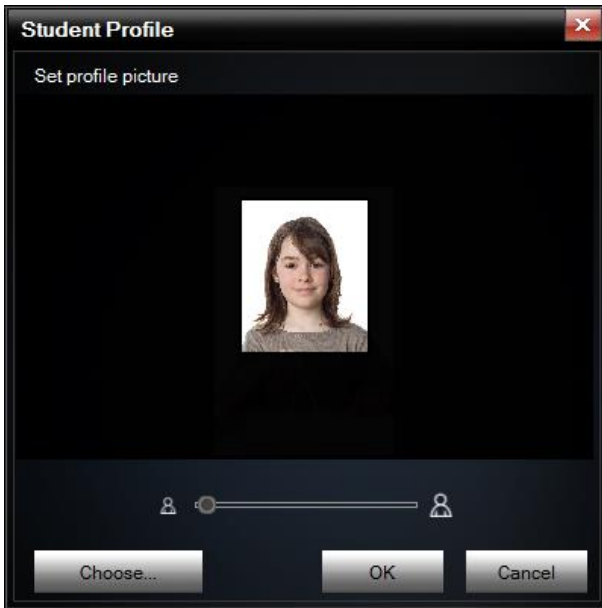
* Indicates required fields

Information

Student ID* : A000321
Gender : Female
Email :
Address :
Parent Name :
Parent Phone :
Parent Email :

Save Cancel

8. Click [**Choose**] and locate to insert the picture of the student.
9. Then use the  to adjust the picture to fit the frame and click [**OK**].




10. Click [Save].

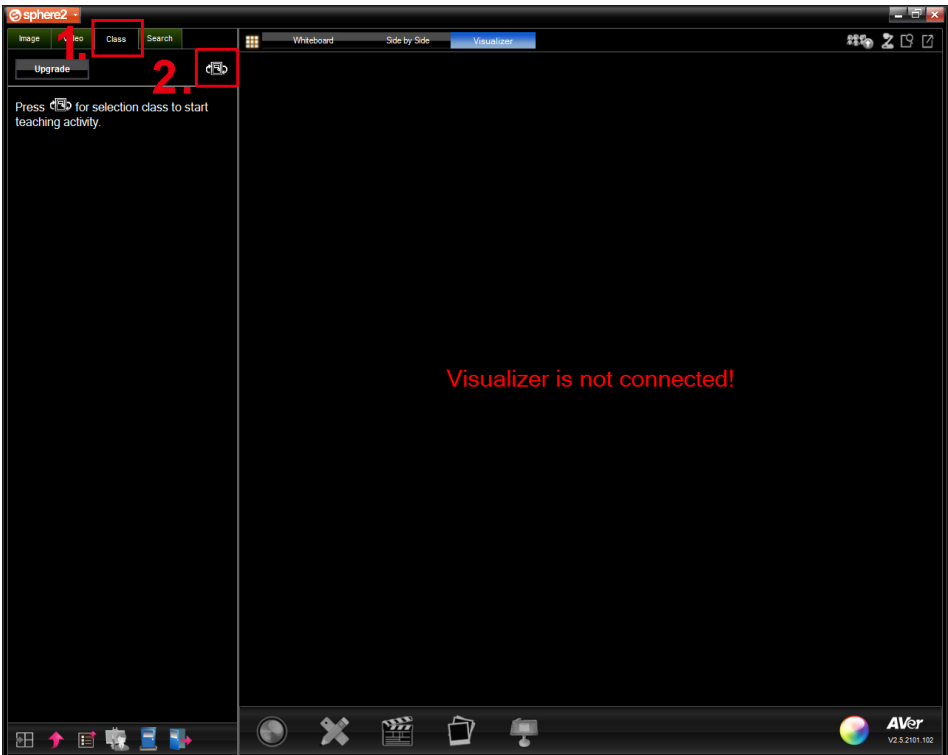
The screenshot shows the "Student Profile" dialog box with a close button (X) in the top right corner. On the left is a profile picture of the same young woman. To the right of the picture are two text input fields: "First Name*" containing "Annie" and "Last Name*" containing "Smith". Below these fields is a red asterisk followed by the text "* Indicates required fields". Underneath is a section titled "Information" containing several text input fields and a dropdown menu: "Student ID*" with "A000321", "Gender:" with a dropdown menu showing "Female", "Email:", "Address:", "Parent Name:", "Parent Phone:", and "Parent Email:". At the bottom of the dialog are two buttons: "Save" and "Cancel".


Class Interactivity

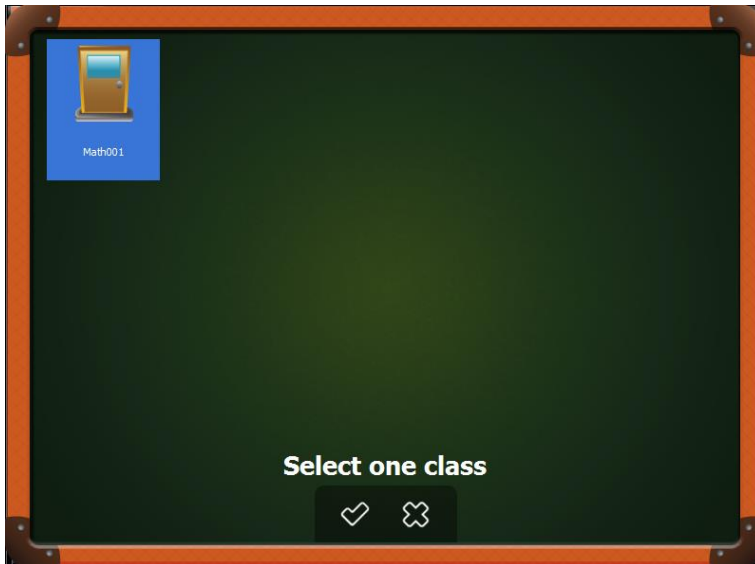
Sphere2 provides interactive between teacher and student during a class. During a class, teacher can send the image of DocCam or Whiteboard to student for self-test or write their opinion or note. Also, students can send back their self-test answer or feedback to teacher.

[Note] Teacher and student need to be in same class and same LAN segment in order to interactive.

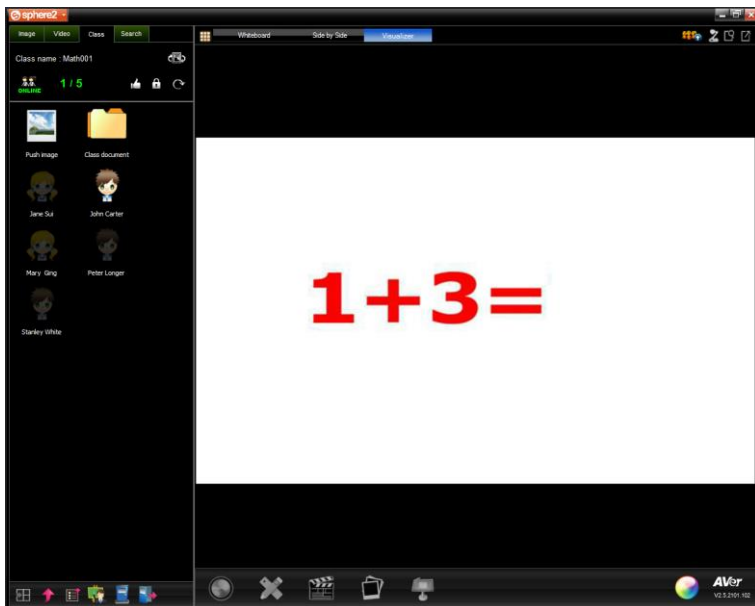
1. Teacher creates a class(To create a class, refer to [Classes](#) section)
2. Click “**Class**” tab and click  to select the class to start.



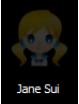



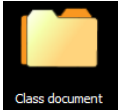


3. From class list, select the class and click  to confirm.

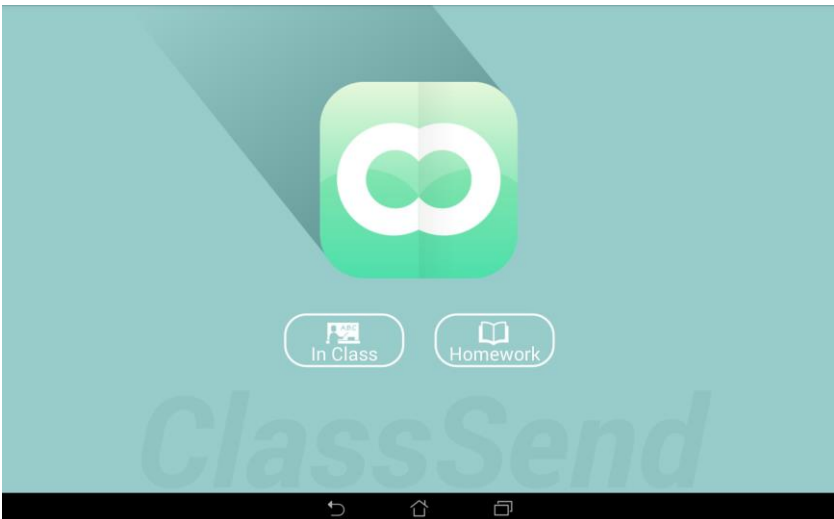


4. When class is started will be shown as like below figure.
[Note] Remember to connect the DocCam for live image view.

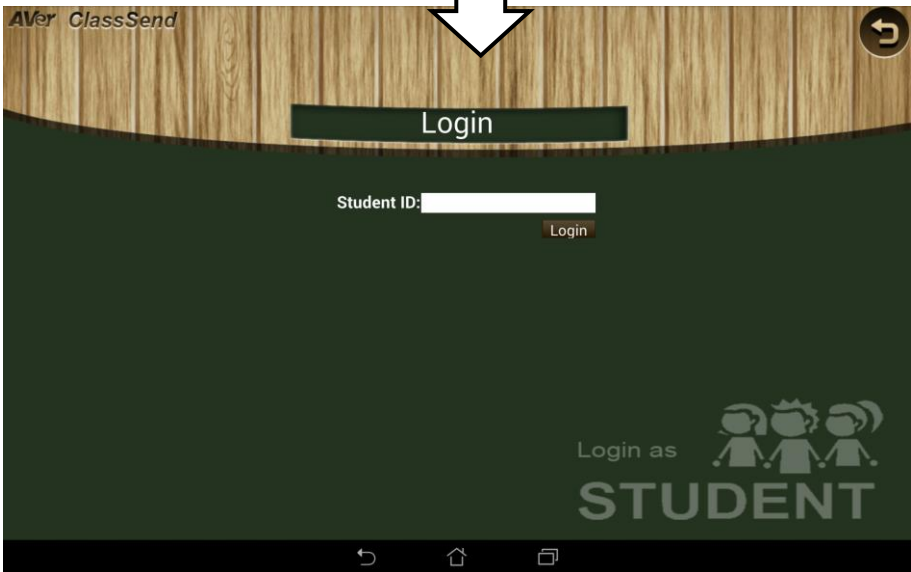
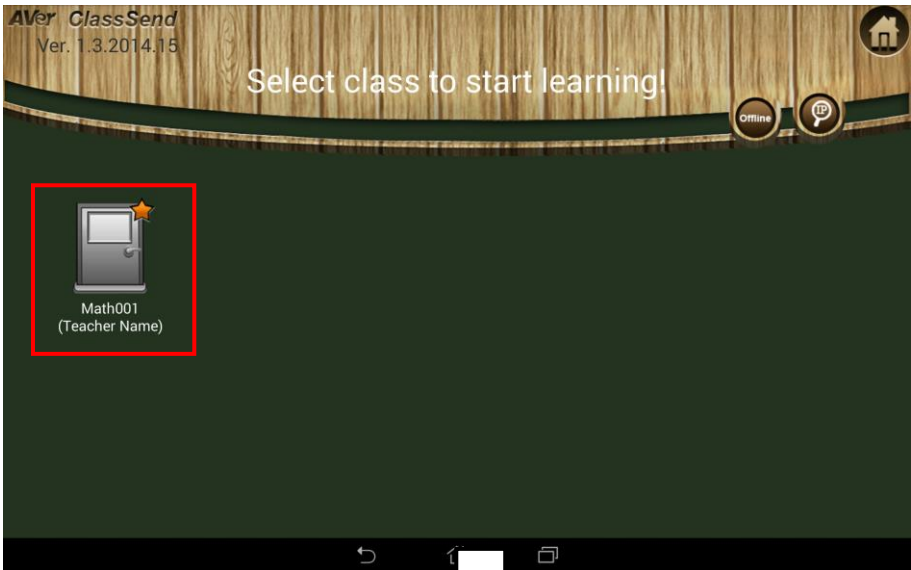


	<p>Display current number of students in class.</p>
	<p>Student is in class.</p>
	<p>Student is off the class.</p>
	<p>Give a reward for students.</p>
	<p>Lock all students or certain students. When students are locked, student cannot send any feedback to teacher.</p>
	<p>Reset students images that has send to teacher.</p>
	<p>The documents folder storages all images/pictures are pushed to students and send back to teacher.</p>

5. Students use ClassSend App to join the class and interactive with teacher. On the tablet device, open the ClassSend and select “**In Class**”.



6. Select the class and enter student ID to login.

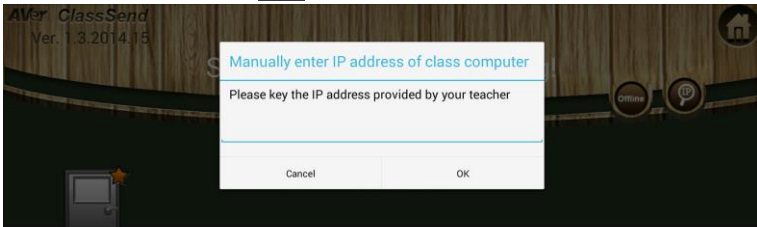


[Note]

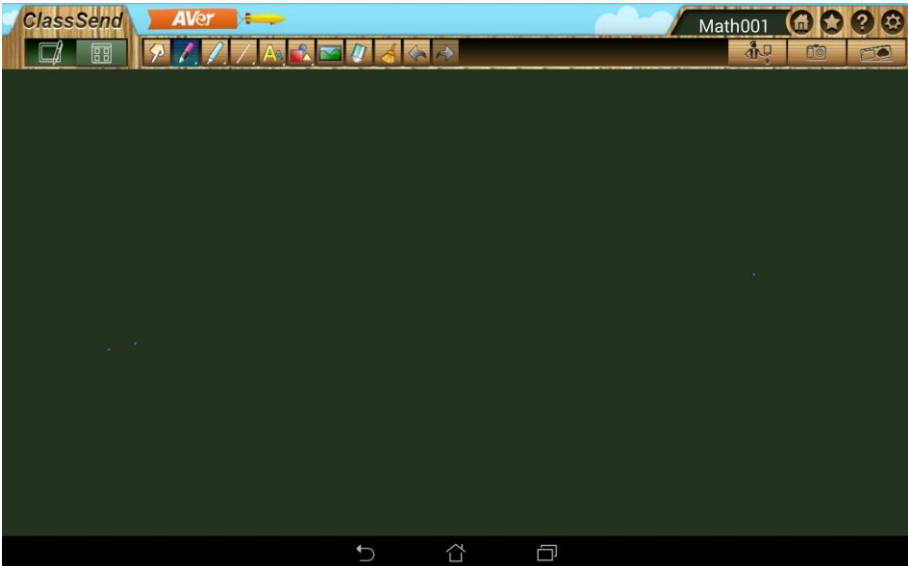
- The PC (Sphere2) and tablet (ClassSend) are in the same LAN segment,


the class will be shown automatically.

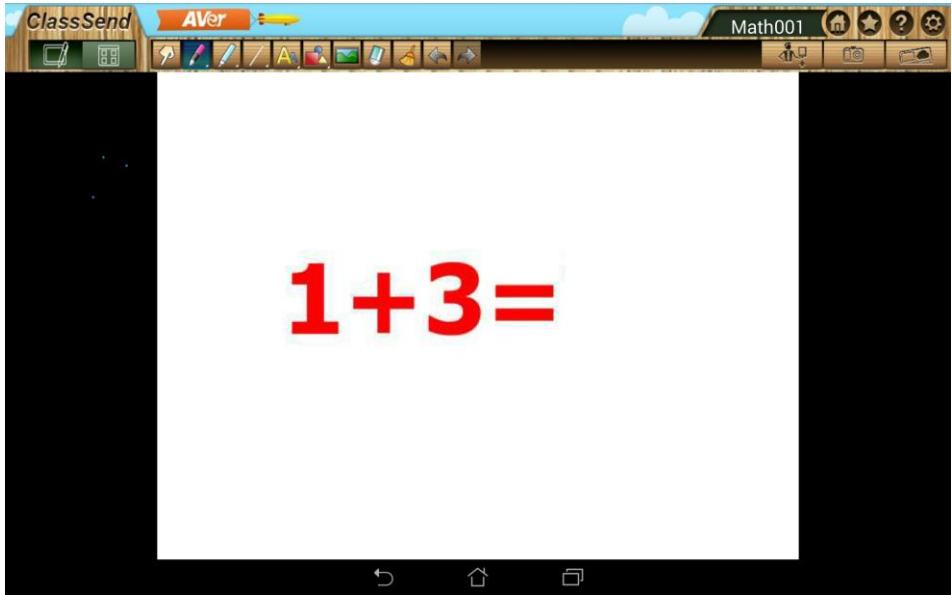
- If class does not show, select  and enter the IP of Shpere2 to connect to class. Click  icon on Shpere2 can find the IP of Sphere2.



7. After login, student will see ClassSend main interface.



8. Teacher clicks  to send the image to all students in the class. Students will receive the image that teacher has sent to them.

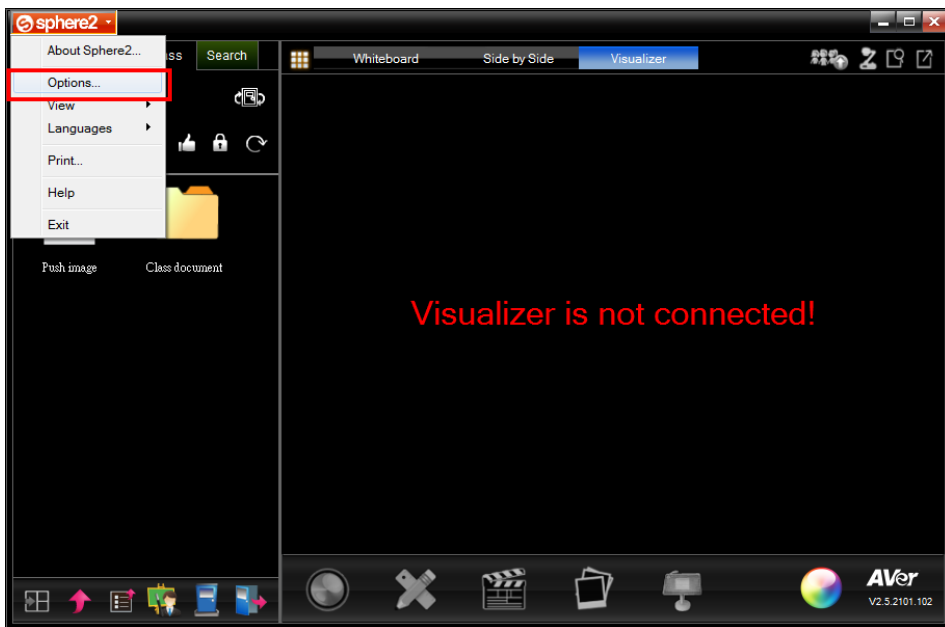


ClassSend screen

9. Students can select  to send the feedback to teacher.

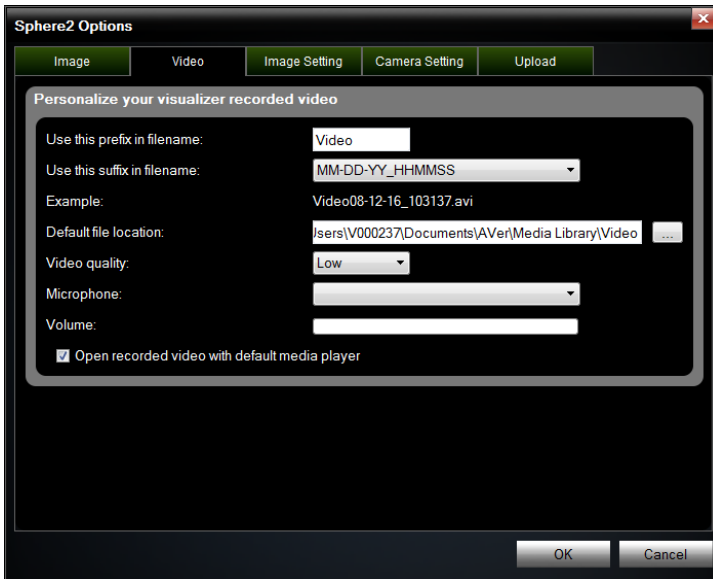
Option Function

In Sphere2 Options, you can personalize your captured image, recorded video or TTS(text to speech), and you can also select the function you want to use in auto adjust.



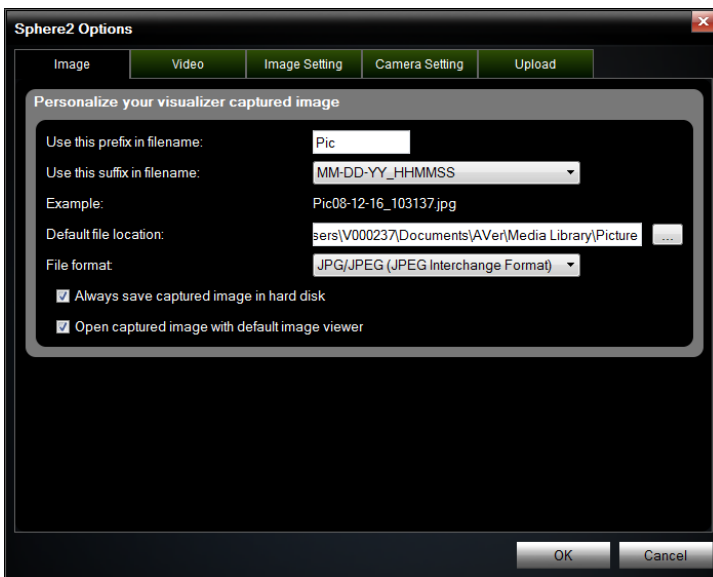
To configure the video recording setting

Click Sphere2 > Options and select Video tab.



To configure the capture setting

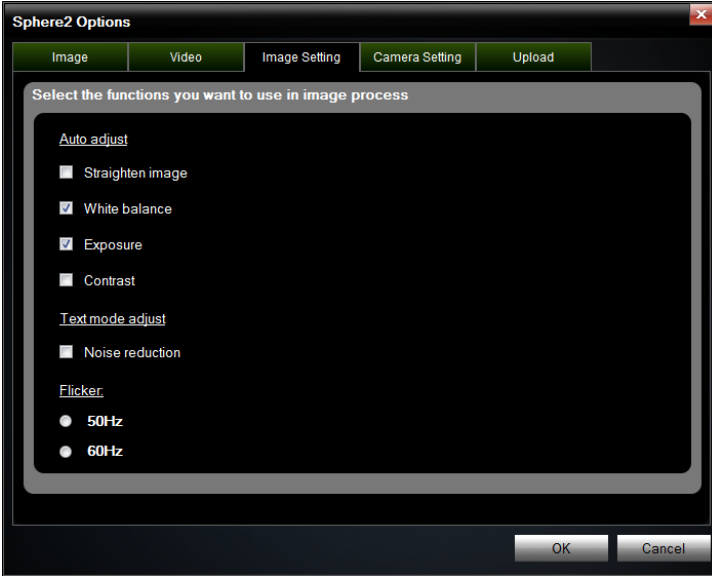
Click Sphere2 > Options and select Image tab.



To use the auto adjust function

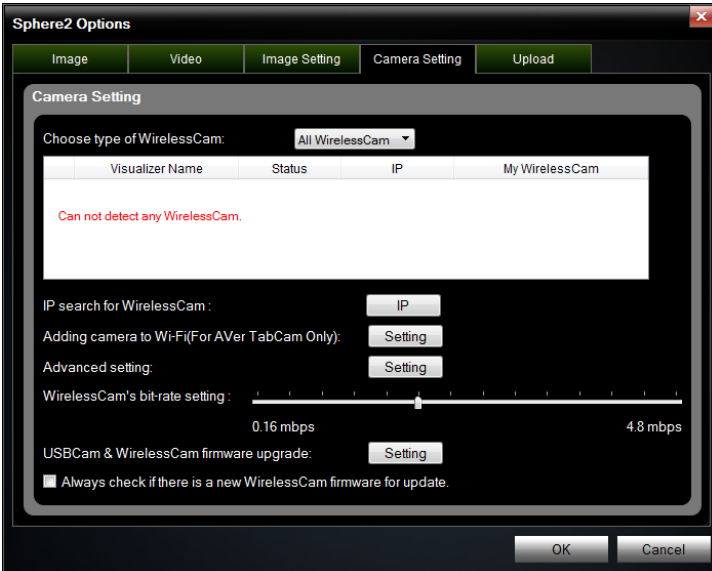
Click Sphere2 > Options and select Auto Adjust.

You can select the function you want to use in auto adjust.



To configure WirelessCam setting

Click Sphere2 > Options and select Camera Setting tab.



To configure file upload setting

Click Sphere2 > Options and select Upload tab.



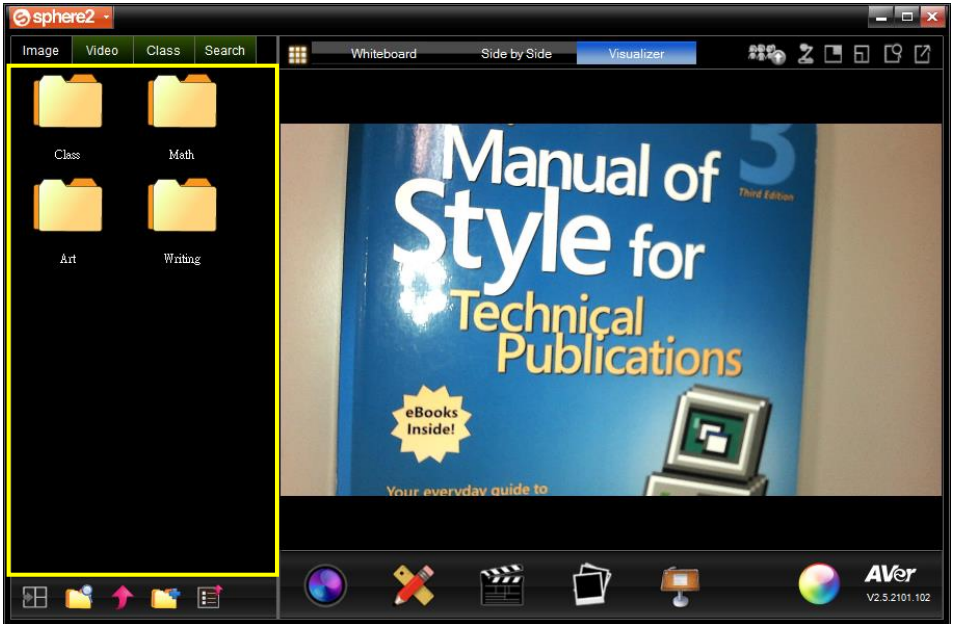
The screenshot shows the 'Sphere2 Options' dialog box with the 'Upload' tab selected. The dialog is titled 'Configure your login Information' and contains the following fields and controls:

	User name	Password	Folder
	<input type="text"/>	<input type="password" value="Link"/>	
	<input type="text"/>	<input type="password" value="Link"/>	
	<input type="text"/>	<input type="password" value="Link"/>	
	<input type="text"/>	<input type="password" value="Link"/>	
	<input type="text"/>	<input type="password"/>	AVerVision <input type="button" value="..."/>
	FTP address:	<input type="text"/>	


At the bottom of the dialog are 'OK' and 'Cancel' buttons.

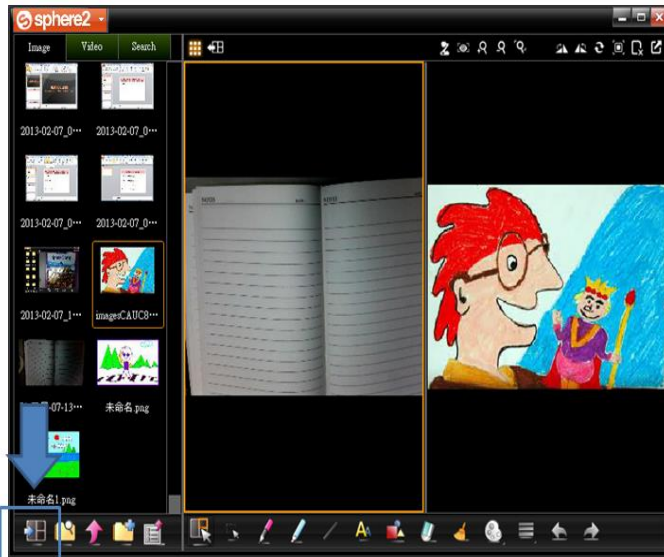
MediaLibrary

In Sphere2 MediaLibrary, you can view visualizer images and recordings saved to your PC. The features provided in MediaLibrary allow you to compare 1~5 saved images with the live image from the visualizer, upload the media and set up the upload information in the upload manager.



To compare images with the live image from the visualizer

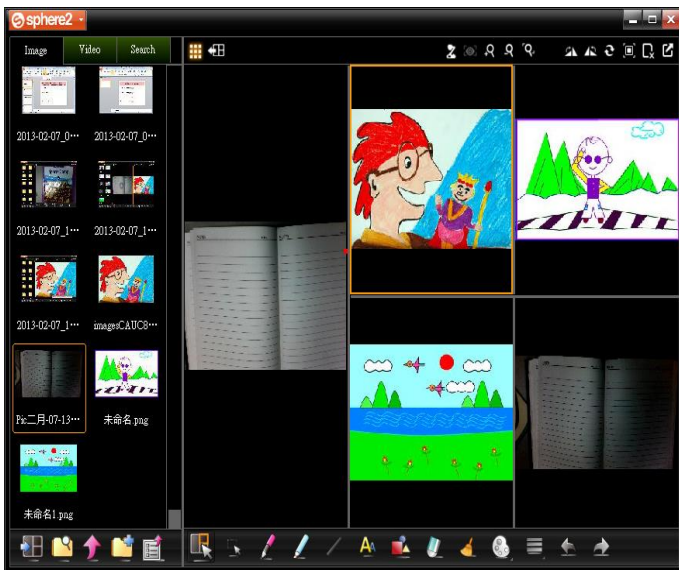
Choose the images from the medialibrary and then click  to insert images for comparison.




If you want to add some marks, draw straight line, freeform line, highlight transparent line, and shape on your slide presentation, then you can double click the image which you want to use for marking.

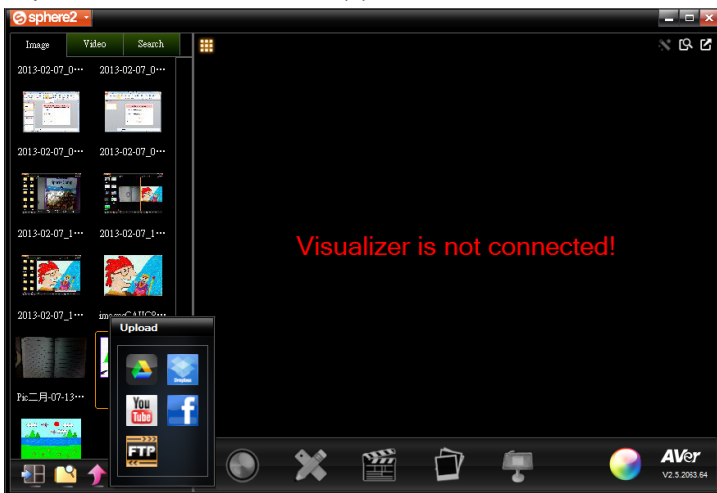


You can compare 1~5 saved images with the live image from the visualizer. Annotation & visualizer tools still accessible.



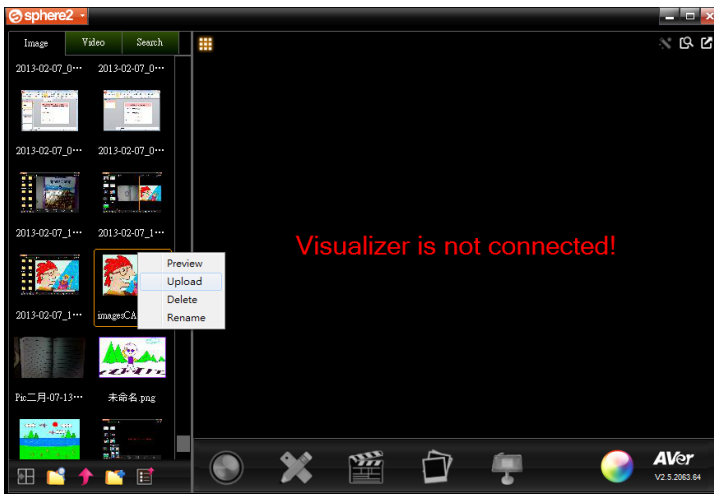
To upload images form medialibrary


1. Click  to directly upload videos/image to your YouTube, Facebook, Google drive, Dropbox, and/or FTP account(s).

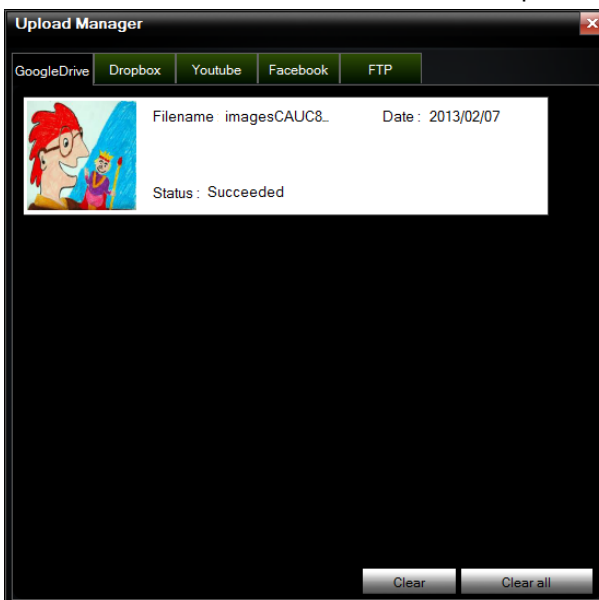


- 2.

3. You can also right click the images in medialibrary and start to upload.



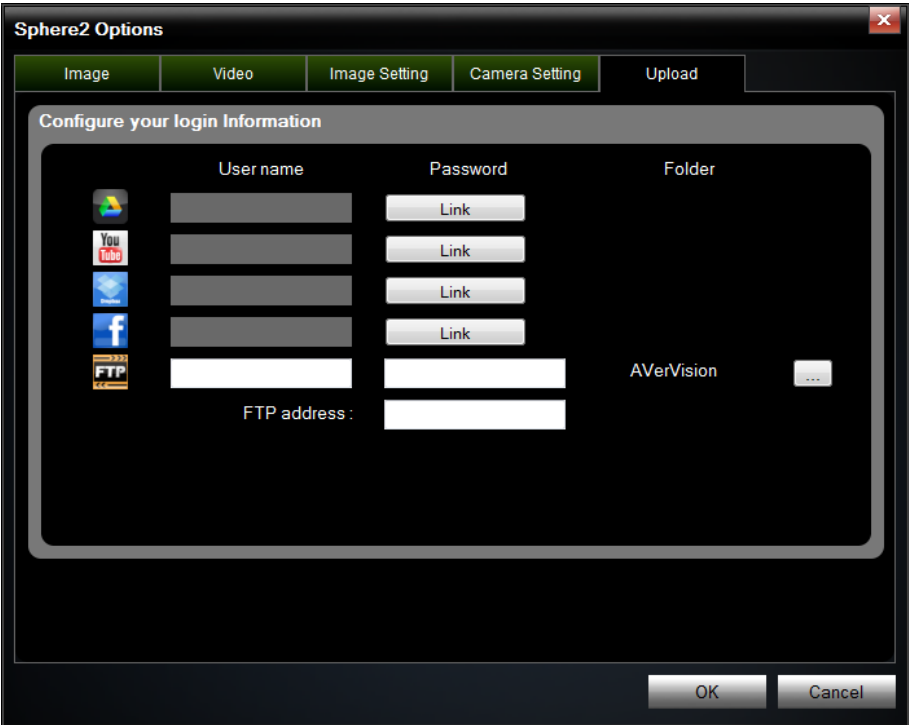
4. Click  to open Upload Manager. It can help you to manager your upload information, choose the folder and add some notes for upload media.



Upload

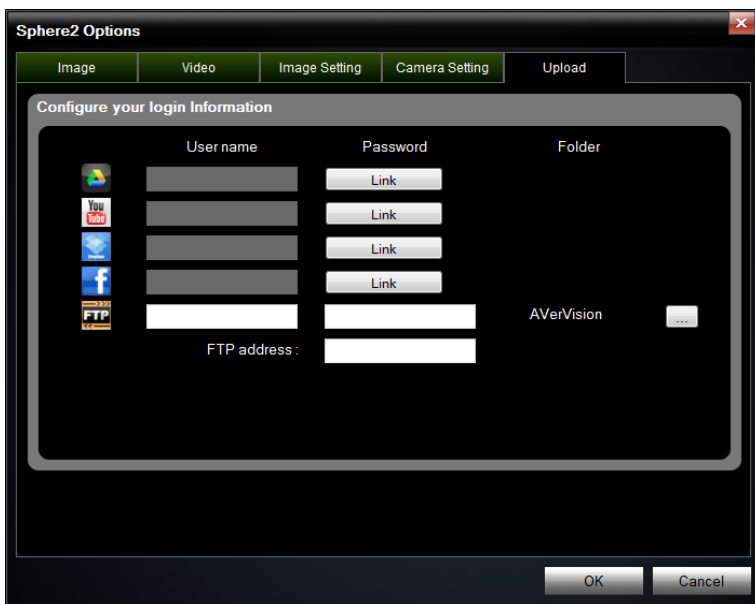
In Sphere2 Upload, you can directly upload videos/image to your YouTube, Facebook, Twitter, Picassa, Dropbox and/or FTP account(s). You can also save your login informations in options, and it may help you save times whenever you want to upload.


Click Sphere2 > Options and select Upload.

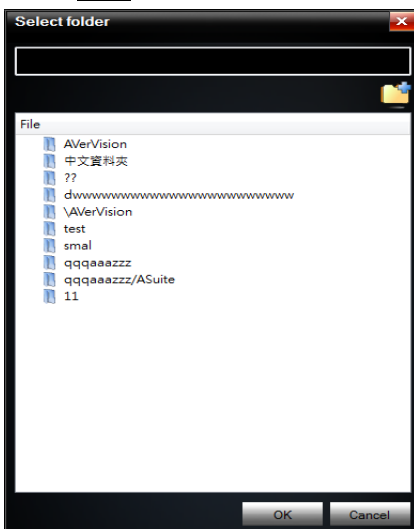


To login and save your information in options

"User Name", "Password" and "address" will be saved if you key in the information and press "OK" button. And if you key in the correct information, then you will upload the images or videos in MediaLibrary without logging again.

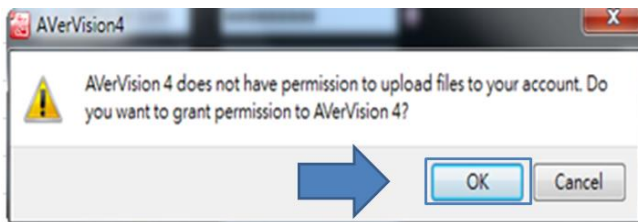


In Facebook and Ftp if you key in the correct login information, you can also choose your folder by clicking .

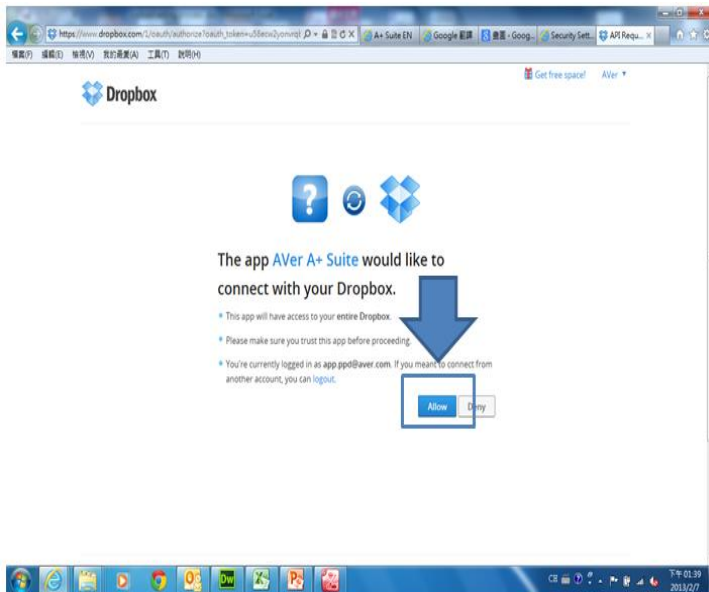
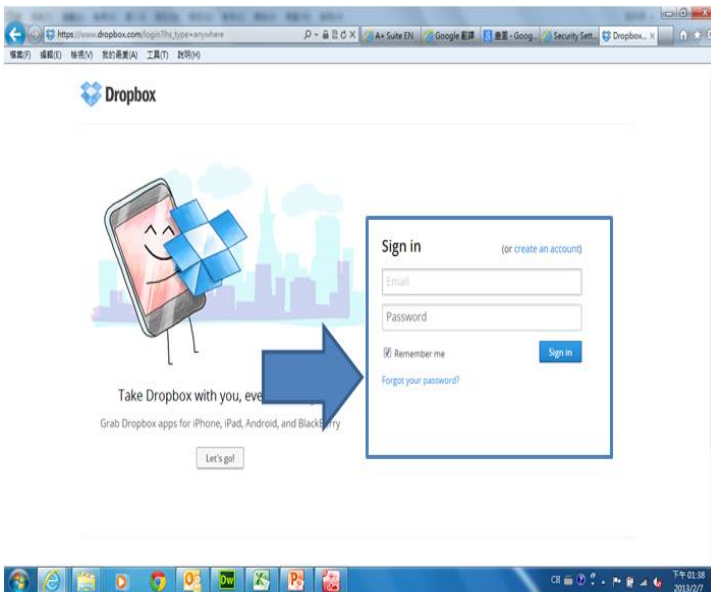


To login and save your information in options(Dropbox)

Click Dropbox's "Link" button and click yes button to open the Dropbox login IE Explorer.



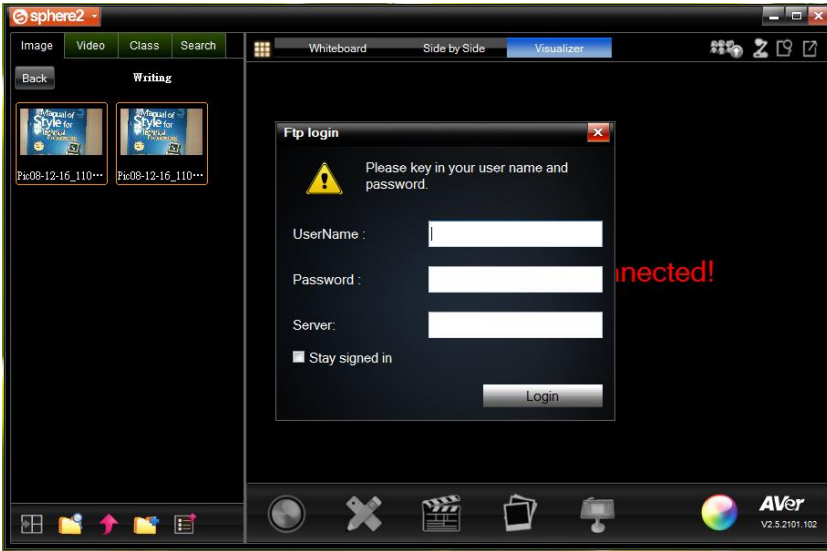
Key in the Dropbox's login information in the Internet, and then click Allow button.



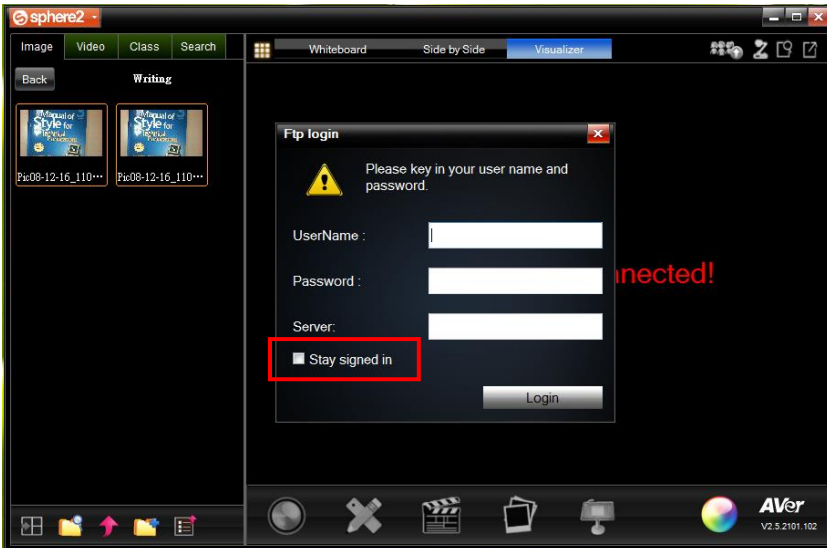
If you login successfully, you will see the Dropbox's "User Name" and unlink button next time you open options.

To upload without saving your information

If you don't want to save the login information in options or "the username or password is wrong", you can directly upload the images in MediaLibrary and key in the login information there.



You can also save the login information to options in MediaLibrary by checking the "stay signed in".

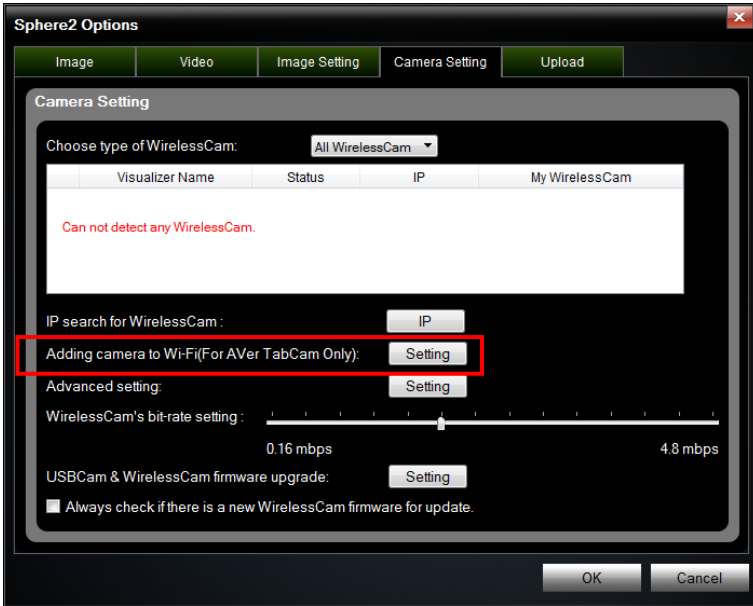


Camera Setting

If you want to change the setting of the F70W/TabCam (WirelessCam) , you can follow the following steps.

To set up TabCam using the QR Code

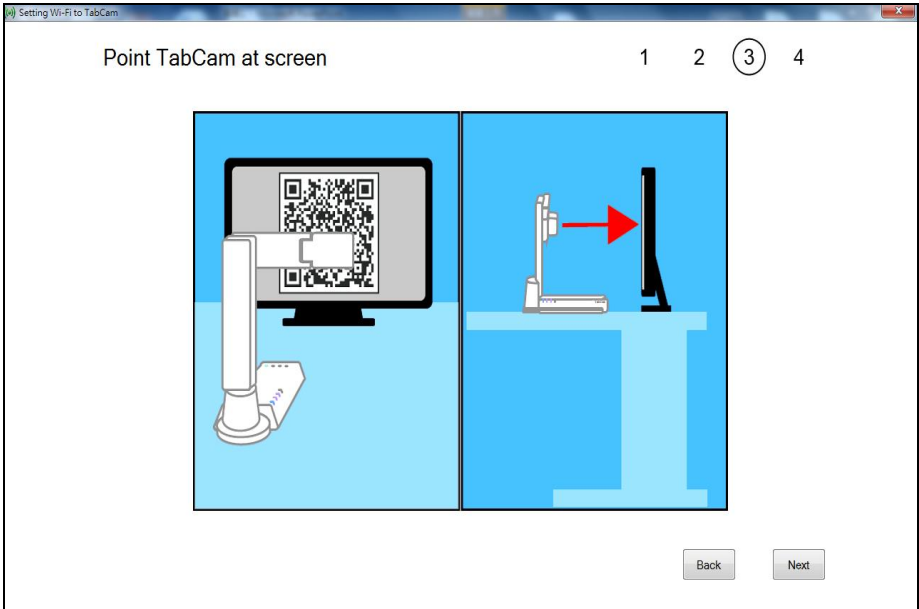
1. Press the Adding TabCam to Wi-Fi network's button.



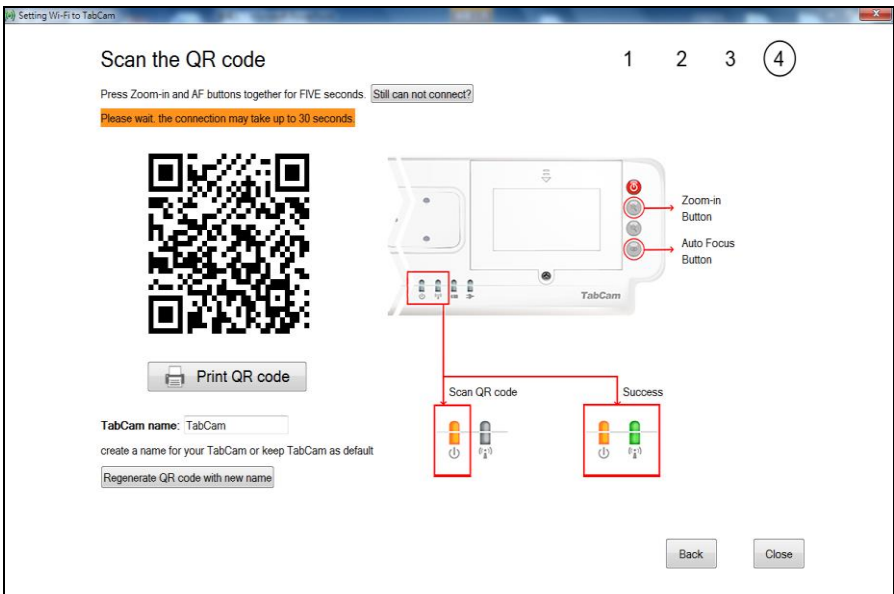
2. Enter your Wi-Fi information as shown in follow picture.



3. On the next page, place the TabCam as shown in follow picture.

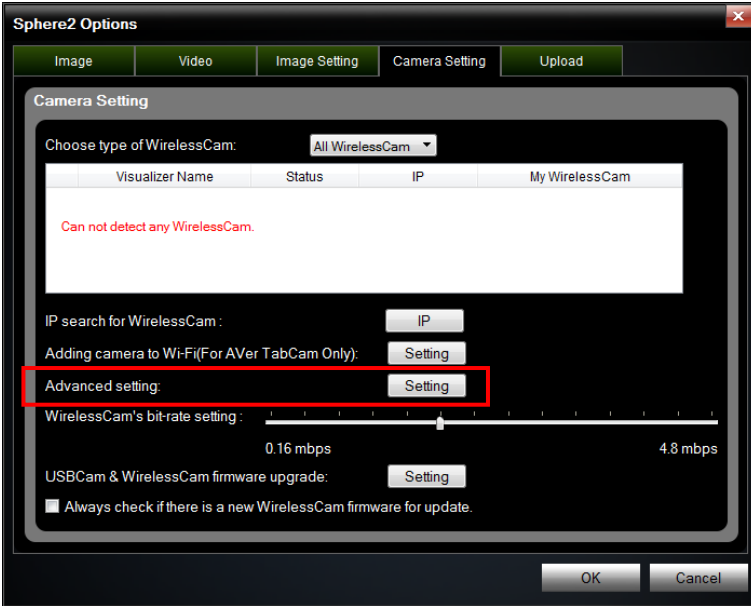


4. On the “Scan the QR Code” page, press the Zoom-in and Autofocus buttons together for five seconds, then release. *Wait approximately 20-30 seconds for scanning to complete.

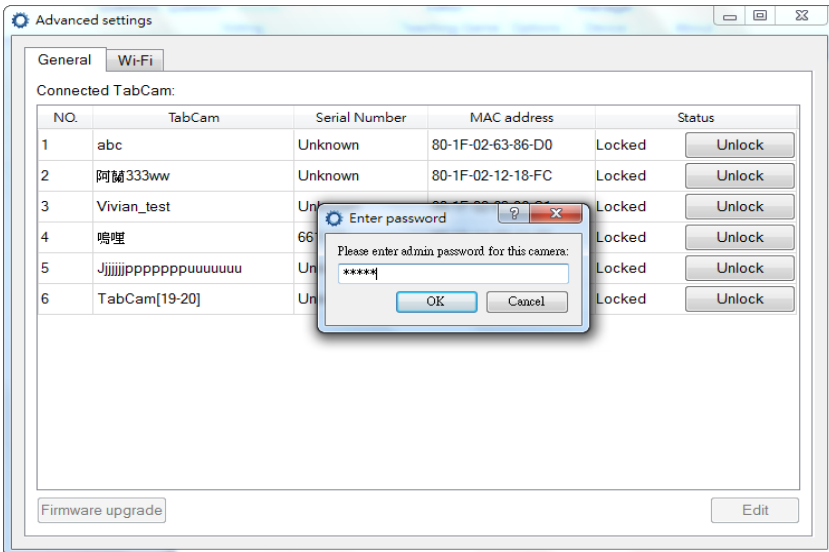


FW Upgrade

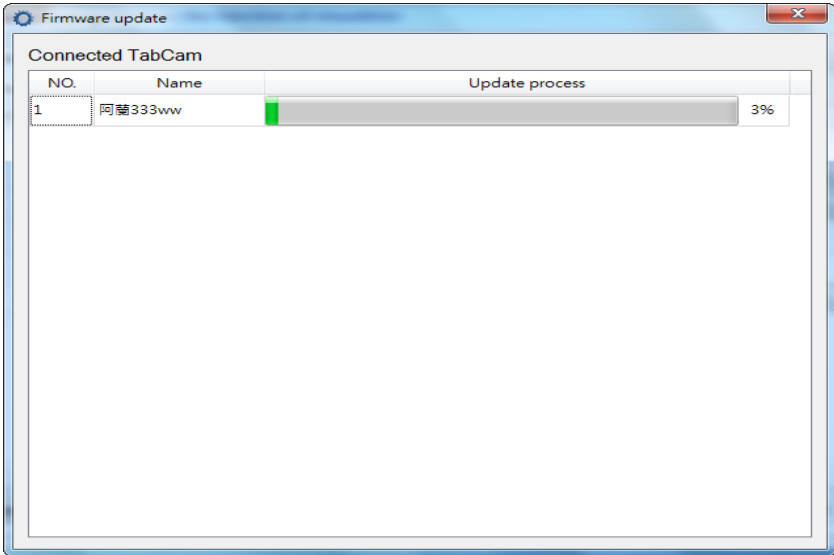
1. Press the "Advanced setting" button.



2. Select your TabCam which you want to upgrade and press the Unlock button to key in the password for getting permission. (Our initial password is "admin")

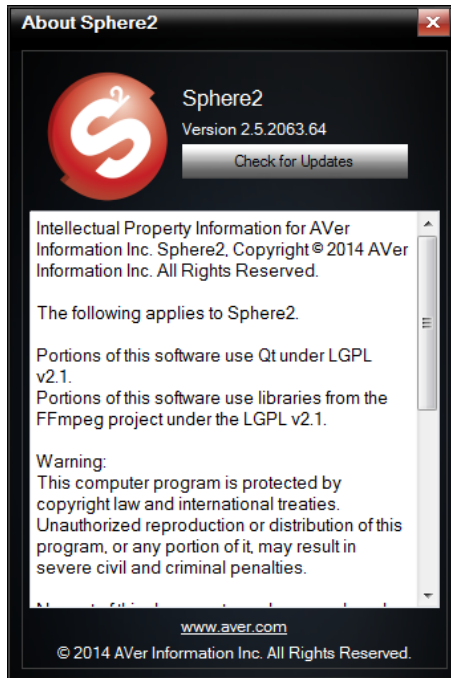


5. Now you start to update your TabCam's Firmware. If you do not update successfully, you can reopen your TabCam and try again.

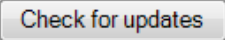


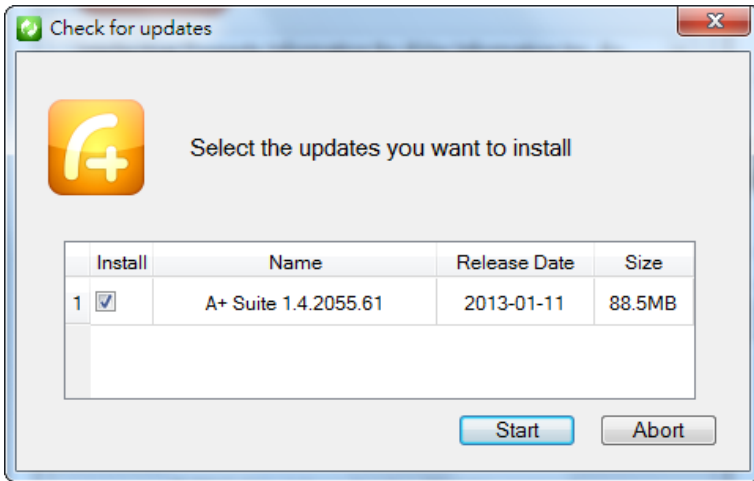
Check for Update

In About dialog box, you can get information of the software product introductions. If we have released the latest version for A+ Suite, you can also find Check for Update button in this page and start to update.

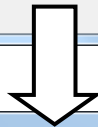
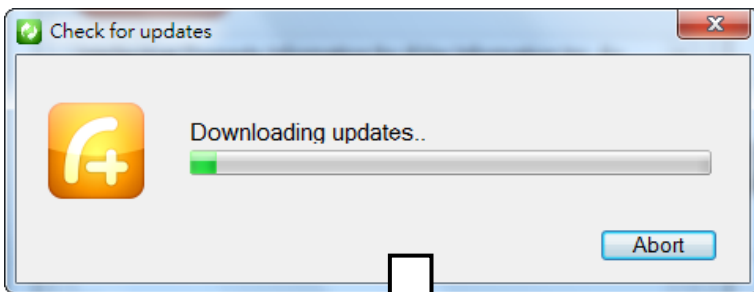


Check for update

1. Press the  button and then you will see the update informations if your version is old.



2. If you want to start downloading the latest version, please press start button and wait until it is finished.



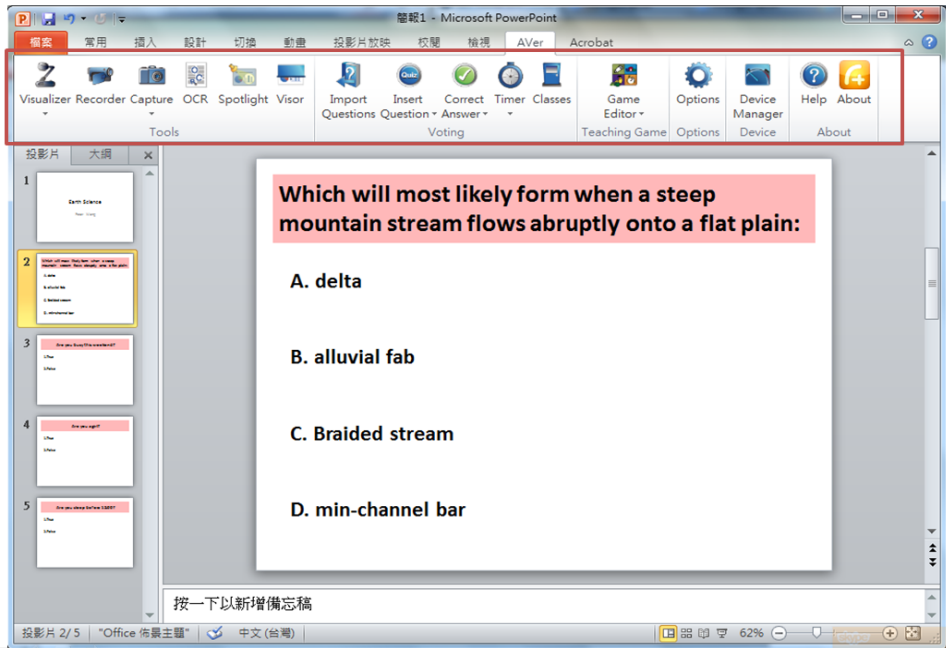
3. Now you can start to install our latest version.

A+ Plug-in for PowerPoint

Overview



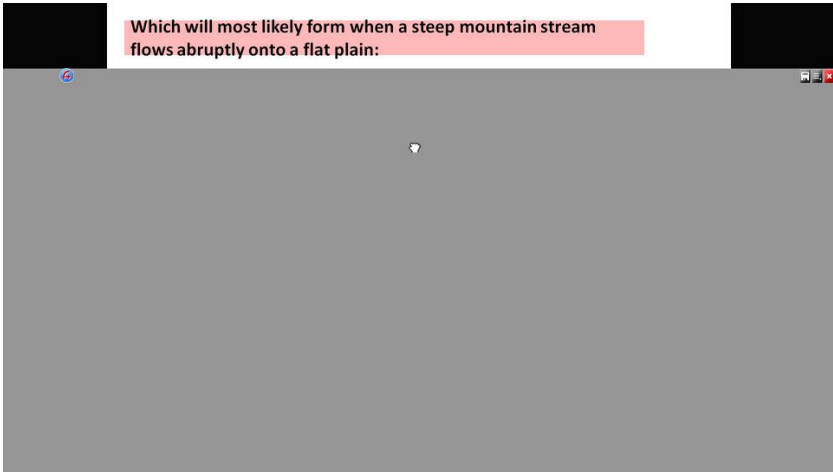
A+ Plug-in for PowerPoint opens the MS PowerPoint 2007 or 2010. The “AVer” ribbon will be added in the tab selections. The features provided in the AVer ribbon allows you to insert Sphere2 video screen, convert image text into typewritten text, add spotlight and visor presentation screen effects, and create voting slide questionnaires. The Spotlight and Visor effects, and the live video from the Sphere2 visualizer can only be previewed when you are in slide show mode. Running the Recorder and Capture programs allows you to record video and take a snapshot of your PowerPoint presentation.




Visor

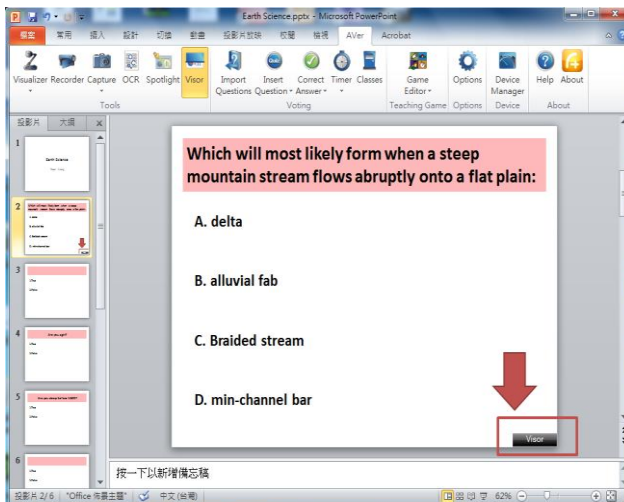


Visor completely covers the slide area with a gray color rectangular shield when you are in PowerPoint slide show mode. The gray cover can be dragged around to show the covered area and change the opacity level.

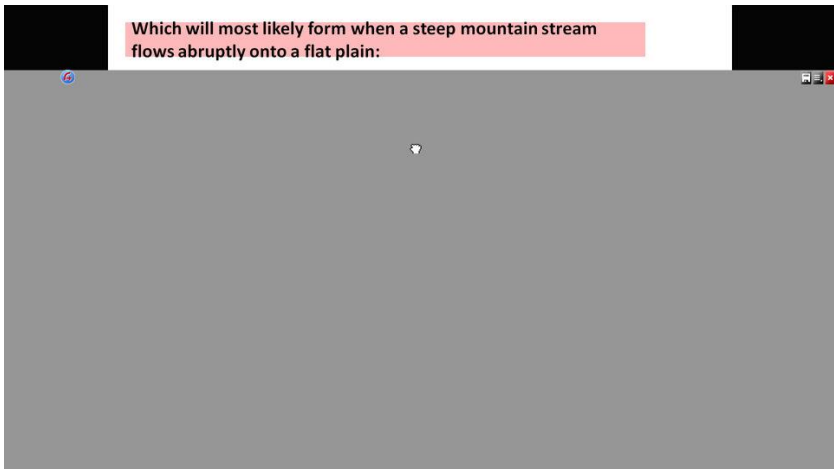





To add and set the visor setting in the slide

1. In your PowerPoint presentation, select the slide you want to add visor.
2. Click . The visor mark will appear at the lower left corner of the slide.



3. Switch to slide show mode when you are done setting all the slides with visor.
4. Click and drag the gray cover to the location on where you want position it.

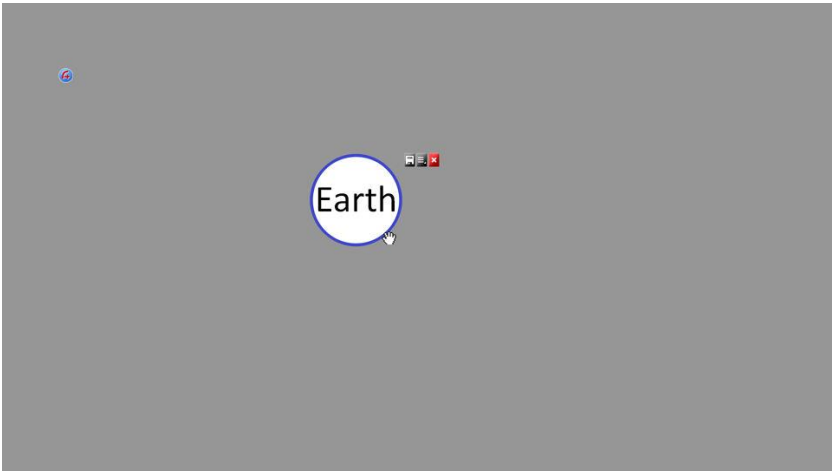


5. At the upper right corner of the visor, click  to change the opacity level of the visor,  to close the visor, and  to save the visor position and opacity level.


Spotlight

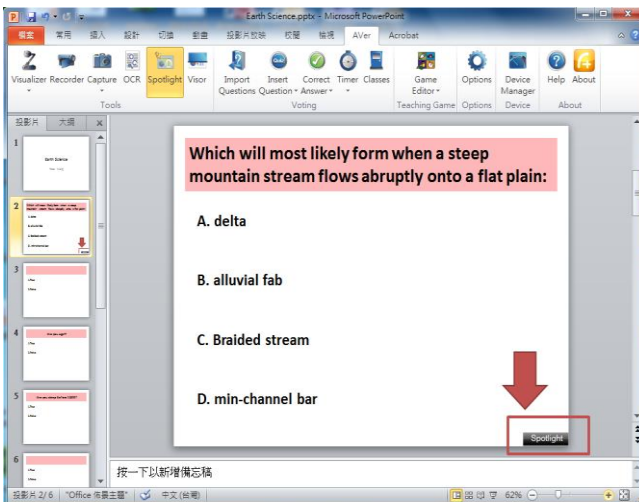


Spotlight focuses the attention of the audience on a spot. It completely covers the slide area while exposing a part of the slide.

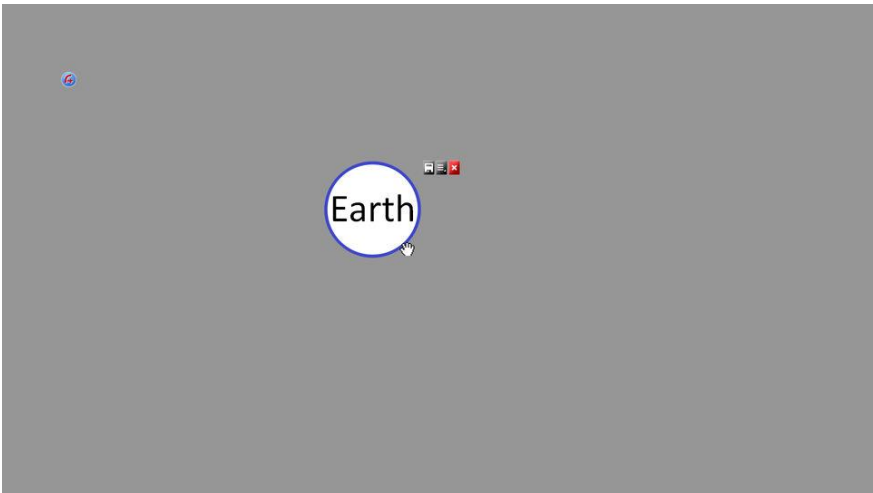





To add and set the spotlight setting in the slide

1. In your PowerPoint presentation, select the slide you want to add spotlight.
2. Click  The visor mark will appear at the lower left corner of the slide.



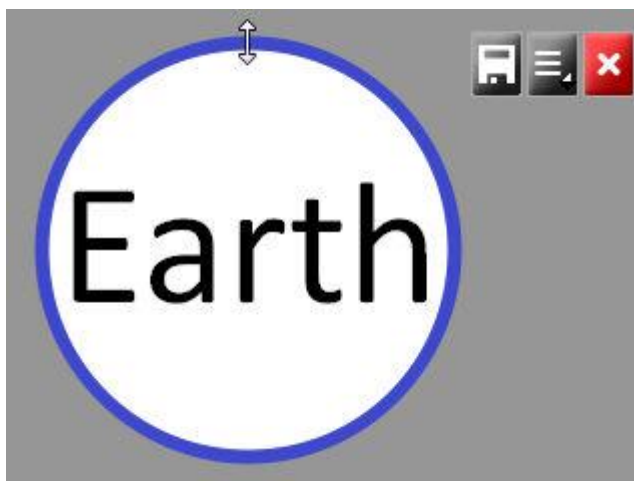
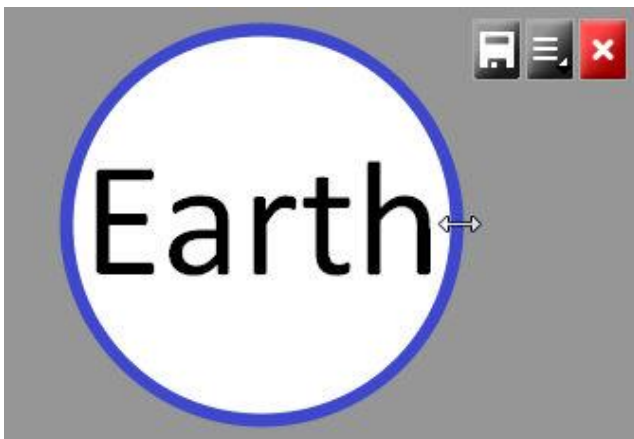
3. Switch to slide show mode when you are done setting all the slides with spotlight.
4. Click and drag the gray cover to the location on where you want position it.



5. At the upper right corner of the spotlight, click  to change the spot shape and the opacity level of the gray area,  to close the spotlight, and  to save the spotlight position, shape, size and gray area opacity level.

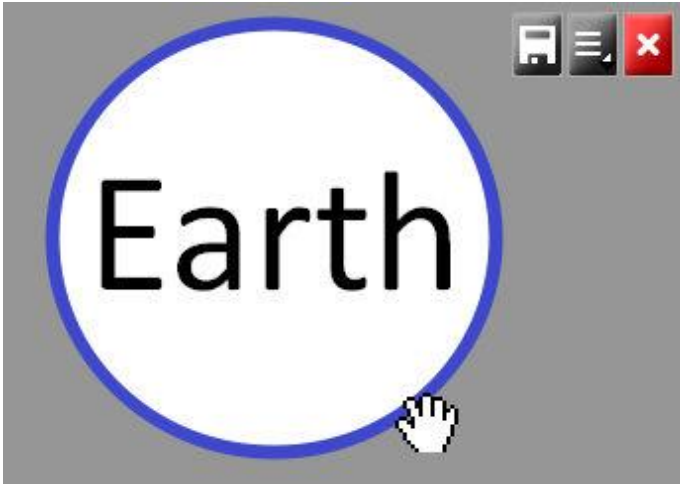
To resize the spotlight

1. Move the cursor to the around the edge of the spotlight.
2. If the cursor changes to 2-headed arrow, click and drag to change the size.




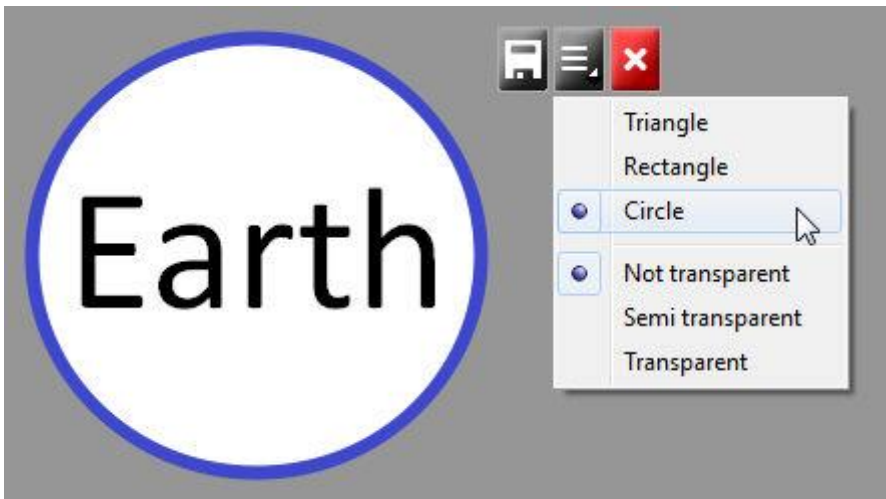
To move the spotlight

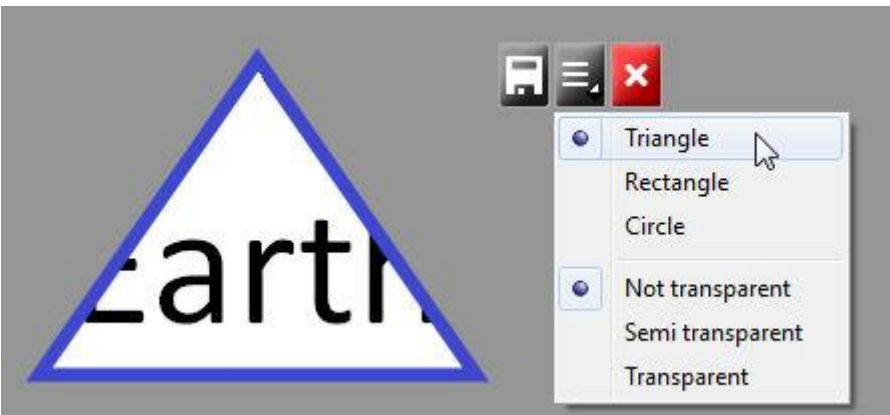
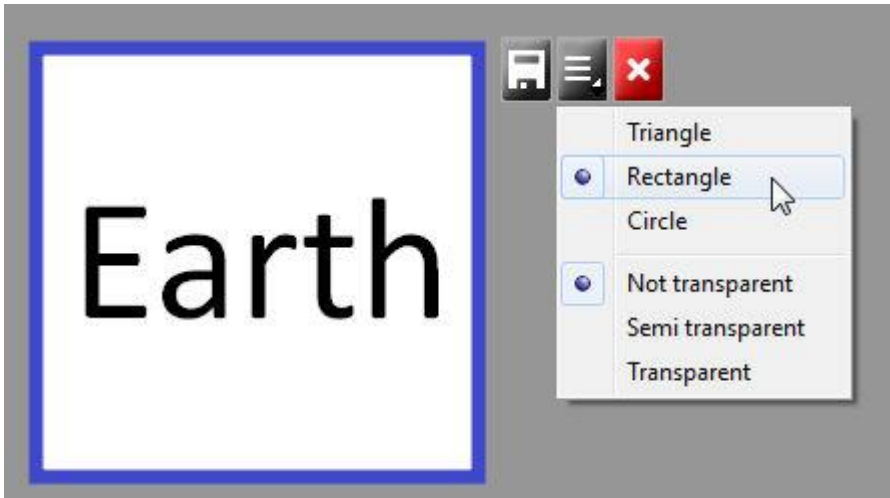
1. Move the cursor to the around the edge of the spotlight.
2. If the cursor changes to a hand shape, click to grab and move the spotlight.



To change the spotlight shape

Click  and select the shape you prefer in the list.






Capture





This is an easy and one quick way to take a screen shot from your desktop screen. It allows you to take screenshots from any part of your screen in 3 ways and insert it directly on your presentation slide.


Note: This program can also be run from this icon .



To use the capture

Click  to capture the entire screen.

Click  to capture the active window.

Click  to capture a region of the screen.








Record



Recorder is used to record the computer screen activities and sound. This allows you to create video tutorials for any software program or video demonstration material on how to solve recurring problem with the computer for technical subject.



To use the recorder

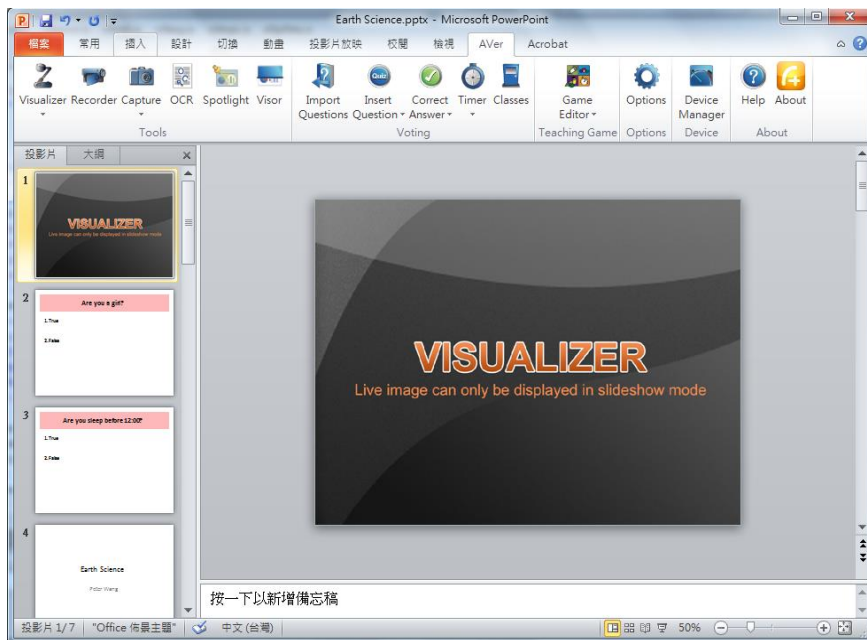
1. Select the area of the screen you want to record. Click  to record the entire screen or  a certain portion of the screen.
2. Click  to enable and  disable recording video with sound.
3. Click  to start recording.
4. The basic Recorder dialog box will appear. Click  to stop video recording and  to temporary pause/resume video recording.




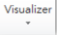
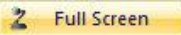
Visualizer

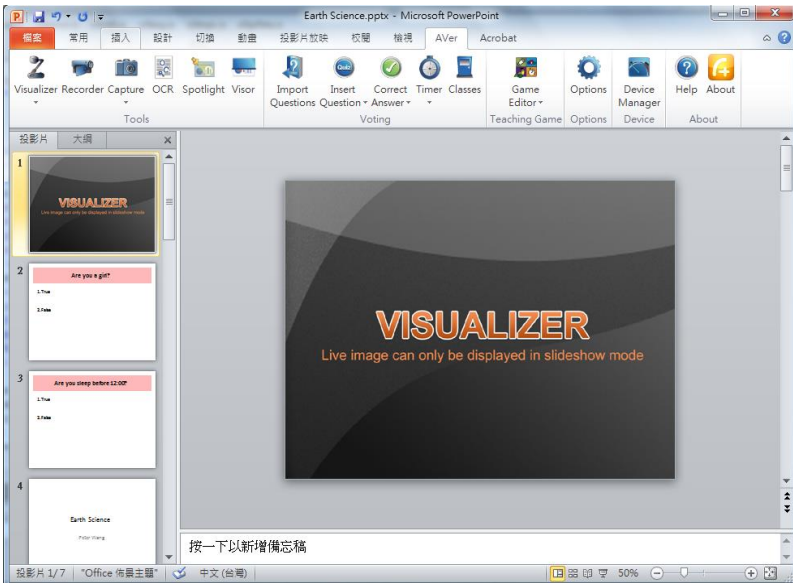
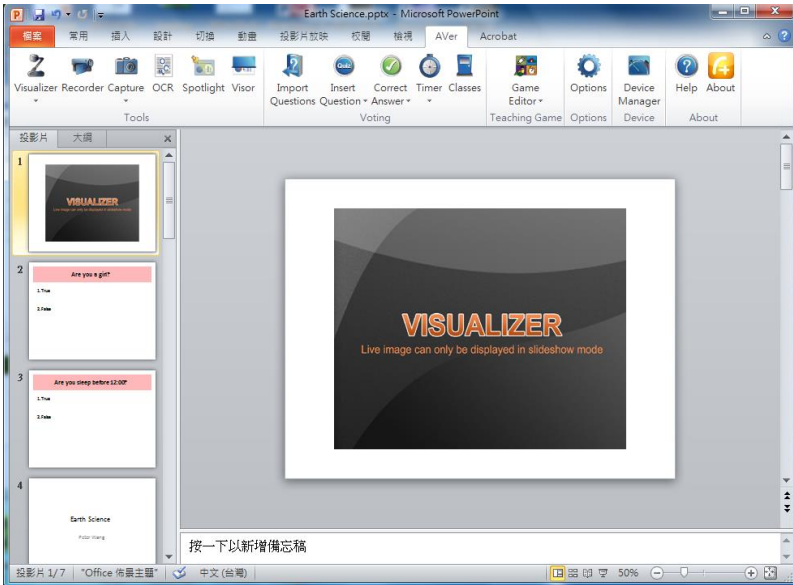


Visualizer allows you to insert the video screen in your slide presentation and present live video from your AVer visualizer in slide show mode. Make sure to connect the AVer visualizer to the computer USB and turned on.



To insert Visualizer video screen

Click  to insert video screen in adjustable size or click  and  to insert the video screen on the entire slide.



To view the Visualizer video screen

Switch to slide show mode to view the live image from the AVer visualizer. There are tools that you can use to enhance the video quality.

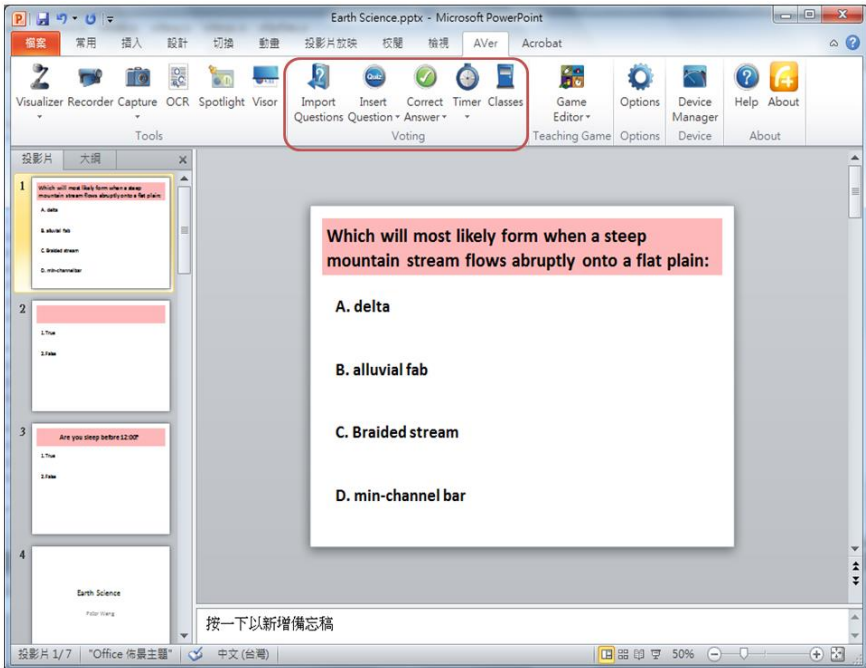


Voting



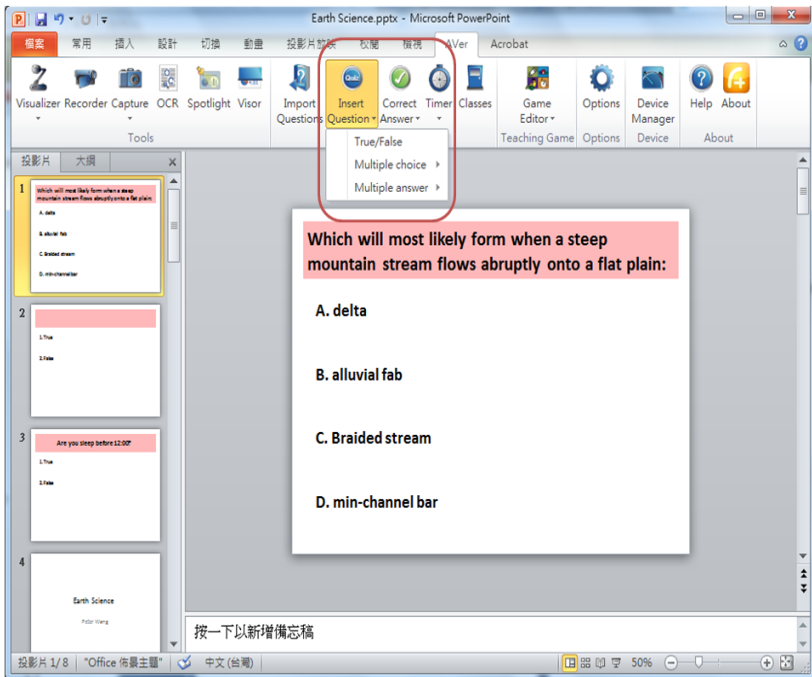
Voting allows teacher to monitor and record the student learning progress. This requires using the AVer voting device, student can vote to response on the question shown on the screen. It's easy to create slide questionnaire. You can directly prepare your slide questionnaire on MS PowerPoint slide or import the questions created in MS Excel in *.xlsx format.



[Important] To start voting, make sure the USB dongle of AVerPen is connected to the computer USB and the student pens are ready.

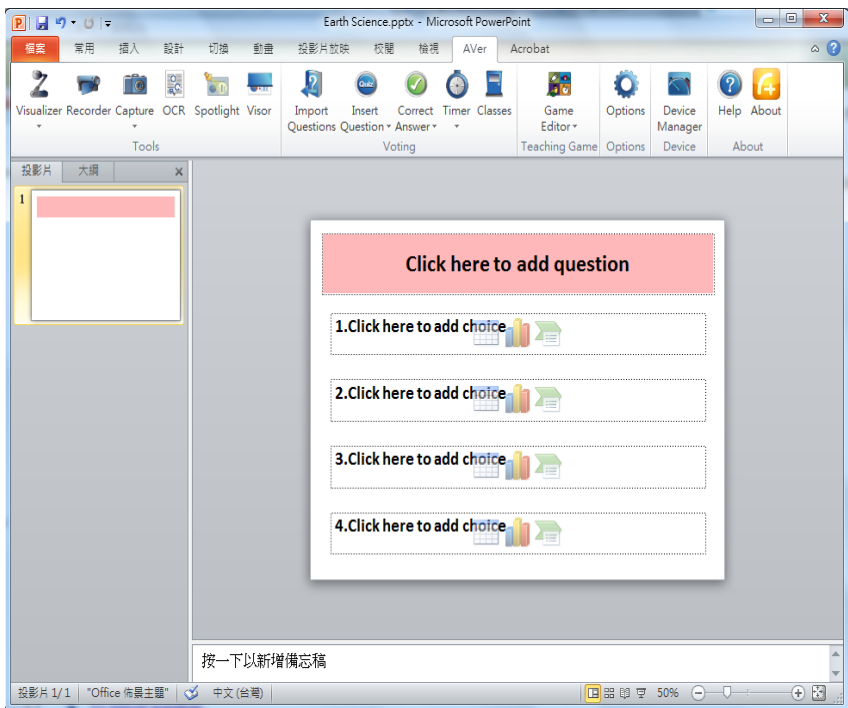


To create slide questionnaire

1. Run A+ Plug-in for PowerPoint.
2. Click AVer > Insert Question.
3. Select the type of question: True/False, Multiple Choice (single answer multiple choice), or Multiple answer (multiple answers multiple choice).

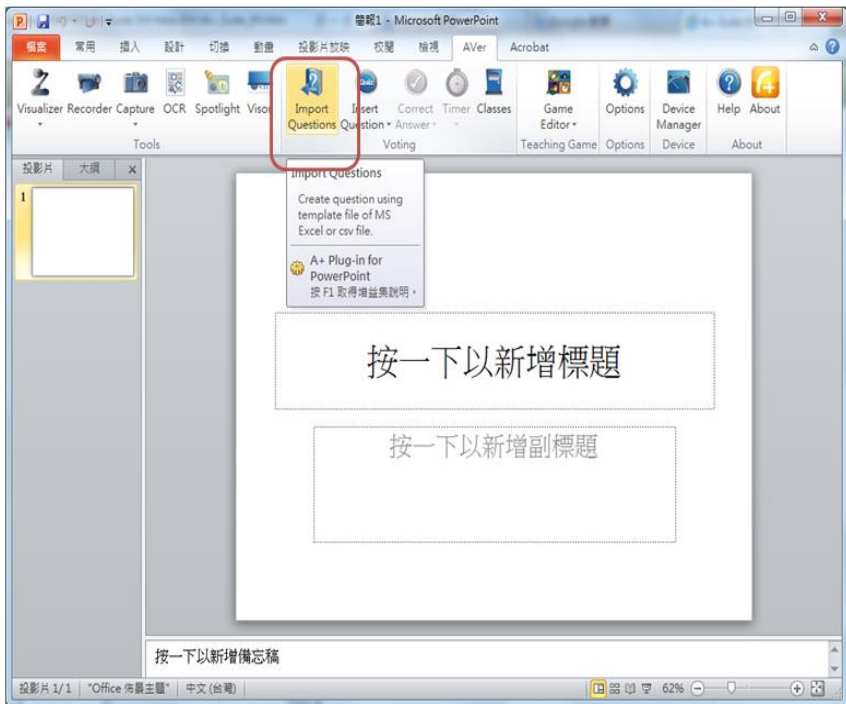


4. A new slide will be inserted. Enter the question in the pink text box and the choices in option text boxes. Click  to set the voting time limit and  to set the correct answer. This would allow recording the student who gets the correct answer in the database. To add more questionnaires, repeat step 2 to 4.

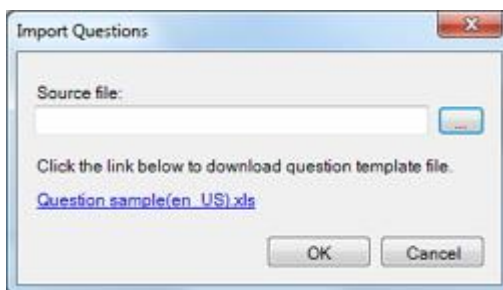


To get sample question file

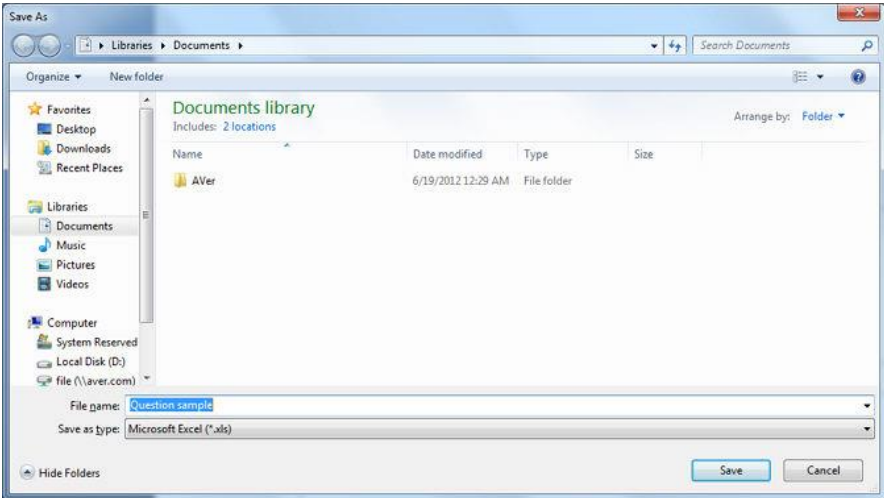
1. Run A+ Plug-in for PowerPoint.
2. Click AVer > Import Question.



3. In the Import Questions dialog box, click [Question sample \(en US\).xls](#) link.



4. You'll be prompted to save the file. Select the location and click Save. To void this operation, click Cancel.

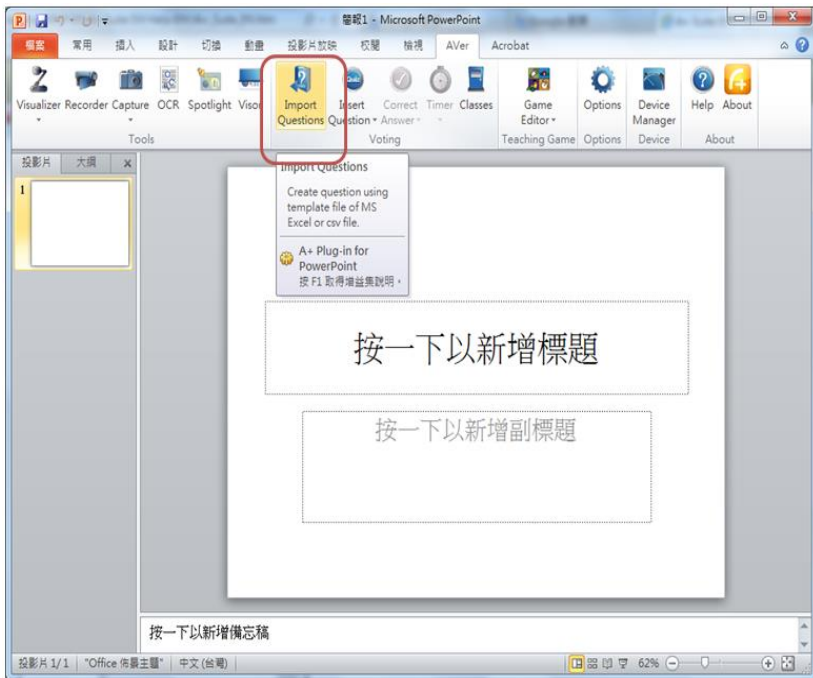



5. Open and edit the file. MS Excel version 2007 and above is required to open and edit the *.xlsx file.

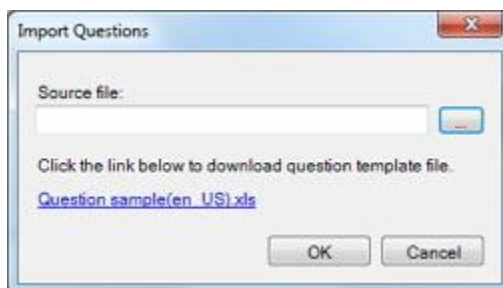
	A	B	C	D	E	F	G	H	I	J	K	L	M	N	O	P
1	Time(sec)	Type	Question	Direct Answer	Ans 1	Ans 2	Ans 3	Ans 4	Ans 5	Ans 6					Question type	Timer
2	No timer	2.Multiple choice	Which of the following is not a part of Dalton's atomic theory?	3	All elements	Atoms of different elements	Atoms can combine both physically and chemically.								1.T/F	15
3	15	2.Multiple choice	How do the isotopes of hydrogen differ?	2	Hydrogen-1	Hydrogen-2	Hydrogen-3	Hydrogen-2 has no protons.							2.Multiple choice	30
4	15	2.Multiple choice	The charge of a proton is _____.	3	0	2	1	-1							3.Multiple responses	45
5	30	2.Multiple choice	The mass of an electron is _____.	4	smaller than	the	mass	of	a	proton						60
6	45	Multiple responses	Select the warm colors.	2,3	Blue	Red	Yellow	Green								120
7	15	1.T/F	Is a spider an insect?	2	Yes	No										180
8																300
9																No timer

To import question

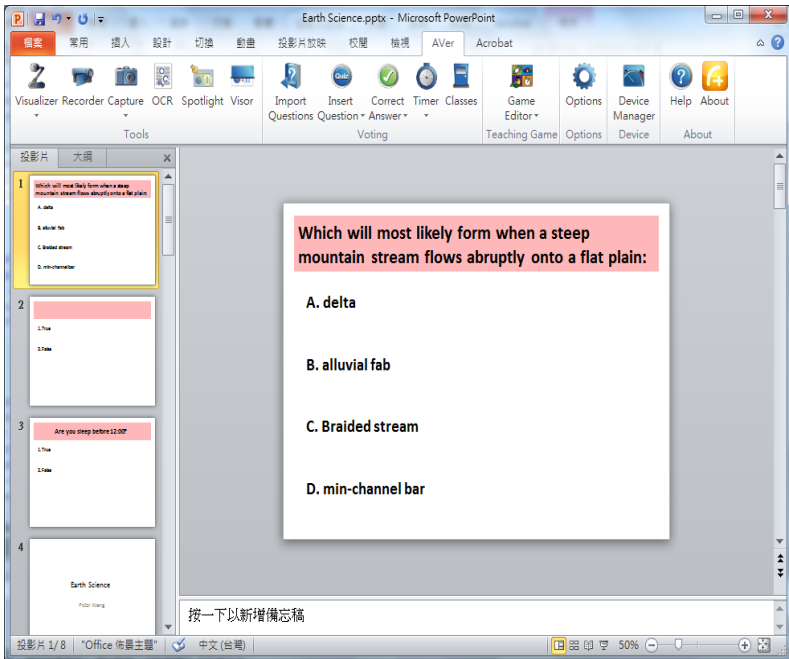
1. Run A+ Plug-in for PowerPoint.C
2. Click AVer > Import Questions.



3. In the Import Questions dialog box, click  and locate the *.xlsx file.

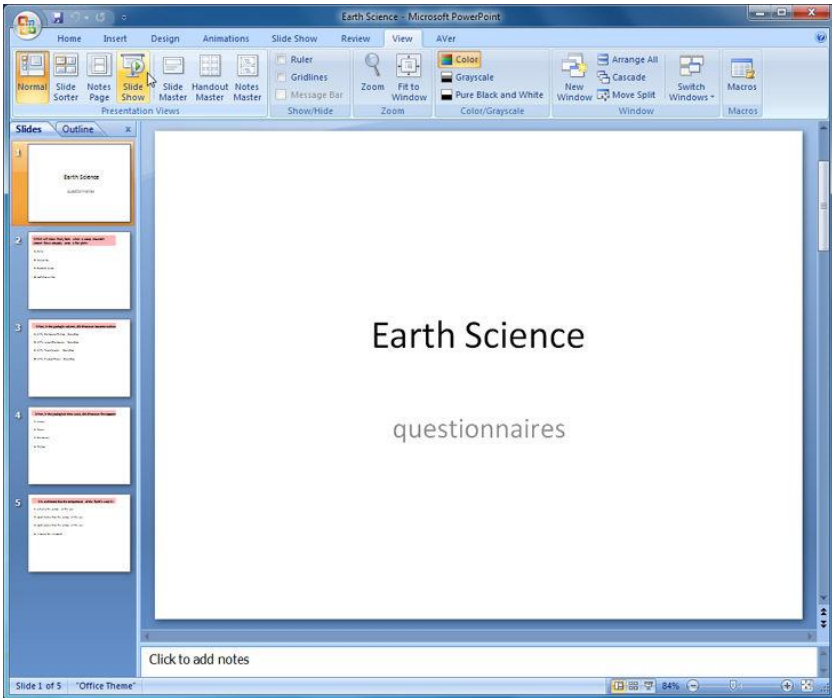


4. Each row in the *.xlsx file will be shown on each slide.



To start the voting

1. Run A+ Plug-in for PowerPoint and switch to slide show.




2. You'll be prompted to select class if the computer you are running this feature have class database record. The result of the student/group that gets the correct answer will be recorded. If Anonymous class is selected, the result will not be recorded.



3. If the first slide is the questionnaire cover, click anywhere on the slide to switch onto the next slide with the question to start voting.



4. The slide with question setting, a voting box will appear. Click  to start voting.

Which will most likely form when a steep mountain stream flows abruptly onto a flat plain:

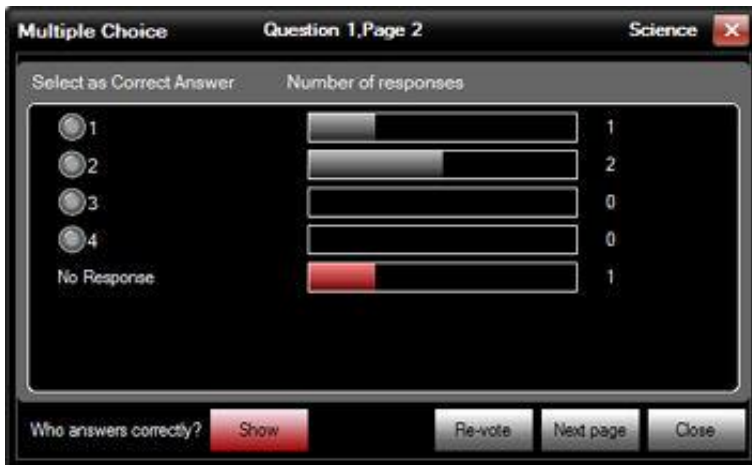
- A. delta
- B. alluvial fan
- C. braided stream
- D. mid-channel bar



To use the voting box

Once the voting stop the result box will appear. Click **[Show]** to display the students who answered the question correctly.

If there correct answer is not assigned in the voting page, teacher can still set the correct answer by clicking the numbered radio button.



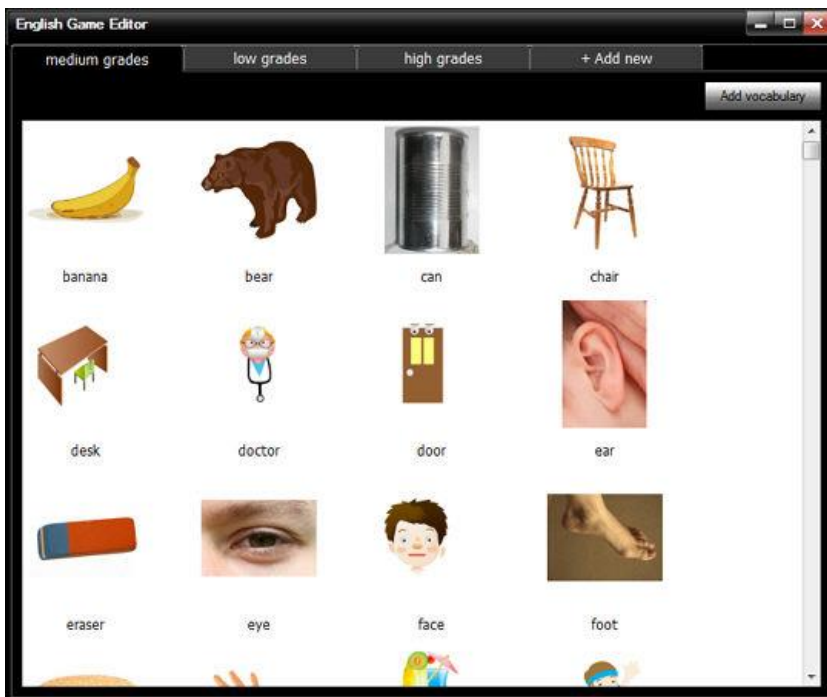
Game Editor



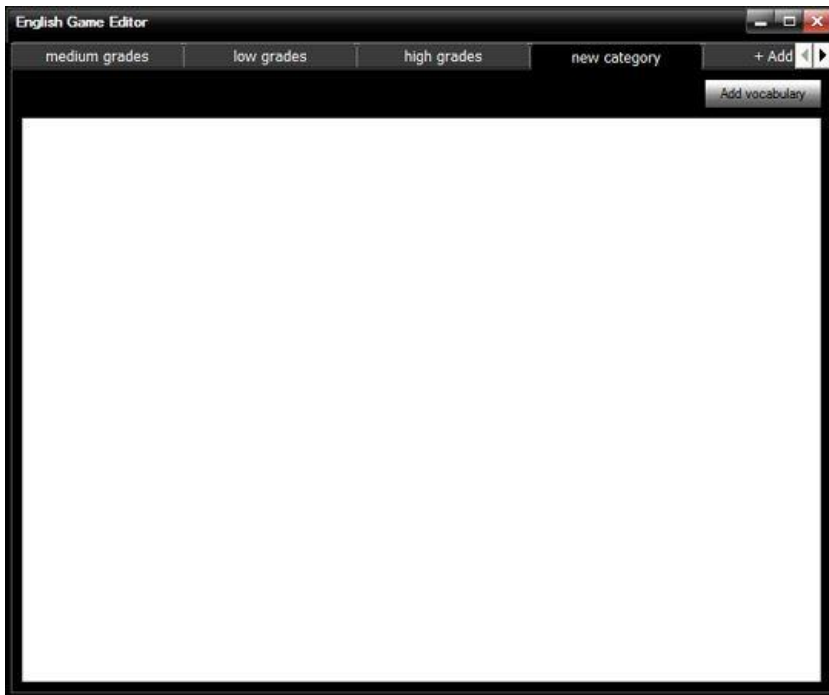
This allows you to check for games updates.

To customize the English game

1. Click English Game Editor > + Add new.

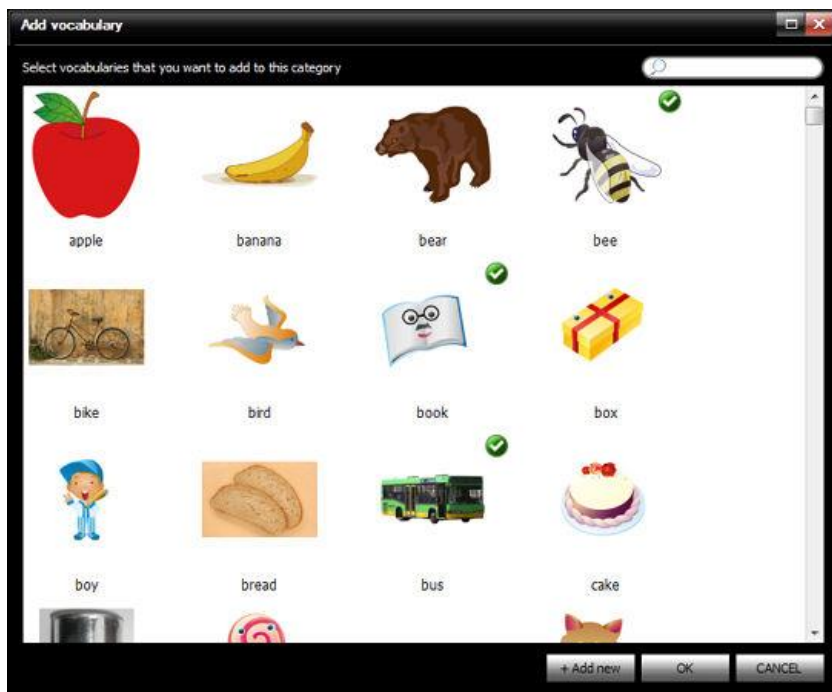


2. A new category tab will appear and click [**Add vocabulary**].

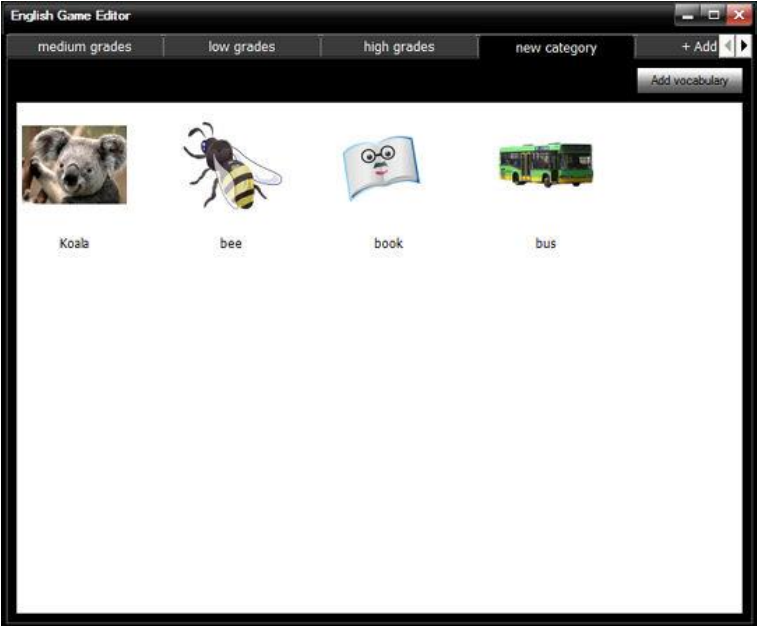


3. Scroll and click to select the image you want to add in the new category, or click [+ Add new] to add your own picture file.

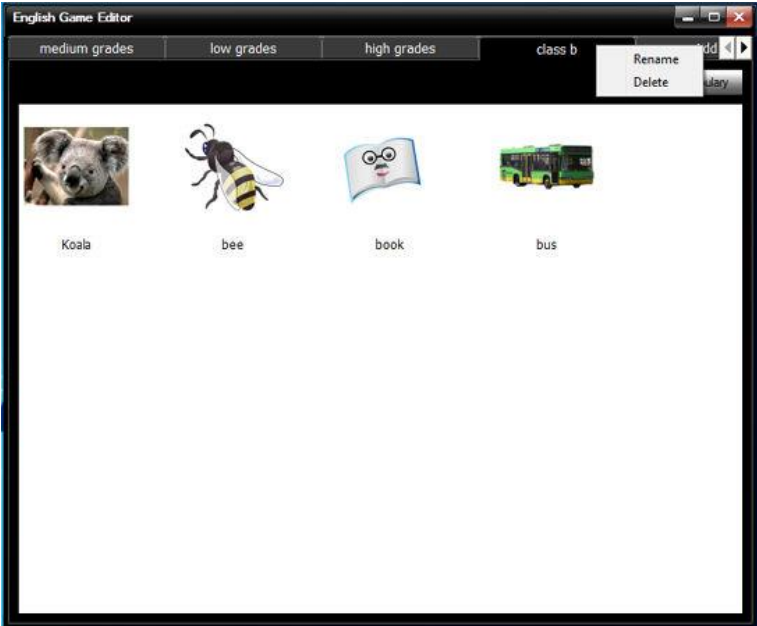
[Note] The filename of the picture will be used as the name of the picture. You can edit it by double-click the name or right-click the image to rename, move, duplicate or delete.



4. Click [OK] to save your selections in the new category.



5. Right-click on the category tab to rename or delete tab. The newly added category will be shown in the English game list.



To update geographic game

Click Geographic Game Manager > Update. This will check and upload if there is new map update. Click **[Remove]** to delete the map.



To update math game

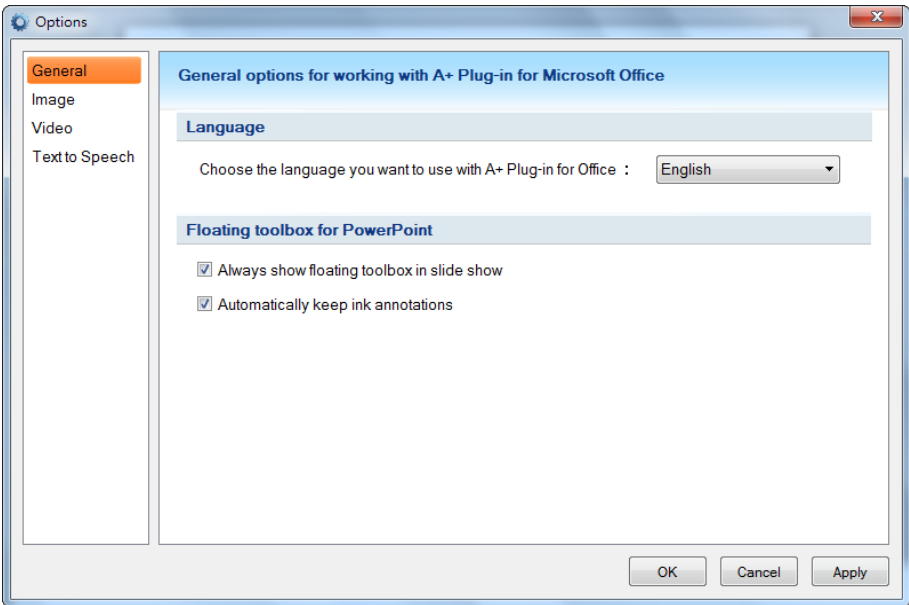
Click Math Game Manager > Update. This will check and upload if there is Math game update. Click **[Remove]** to delete the math material.



Option



In Options dialog box, you can change the setting of A+ Plug-in for PowerPoint in General, the Capture settings in Image, the Recorder settings in Video, the Teaching tool text to speech setting.



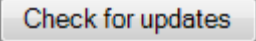
Check for Update

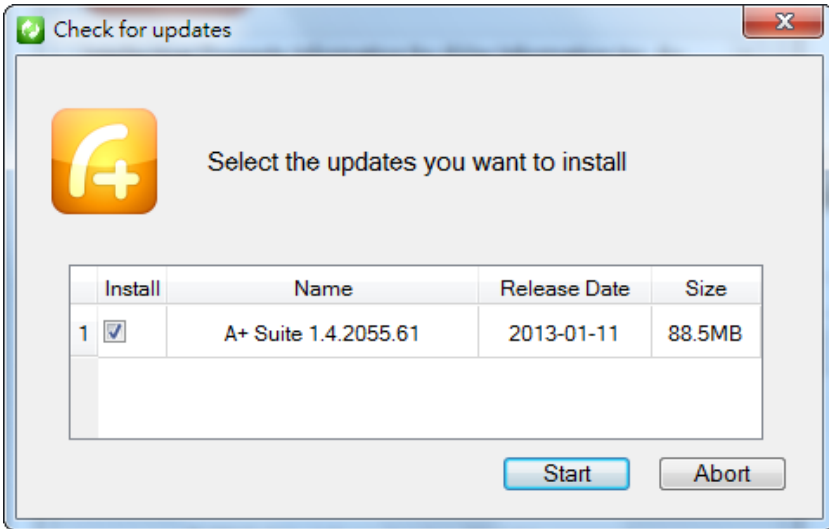


In About dialog box, you can get information of the software product introductions. If we have released the latest version for A+ Suite, you can also find **Check for Update** button in this page and start to update.

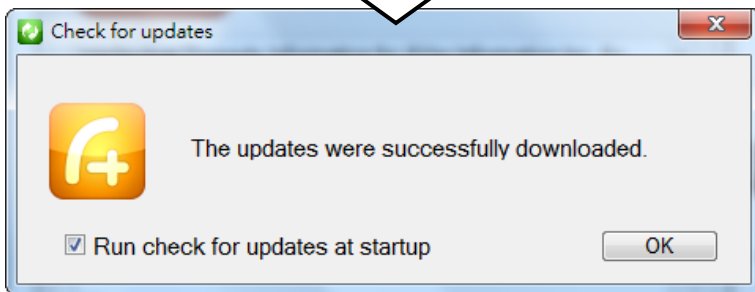
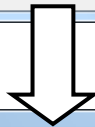
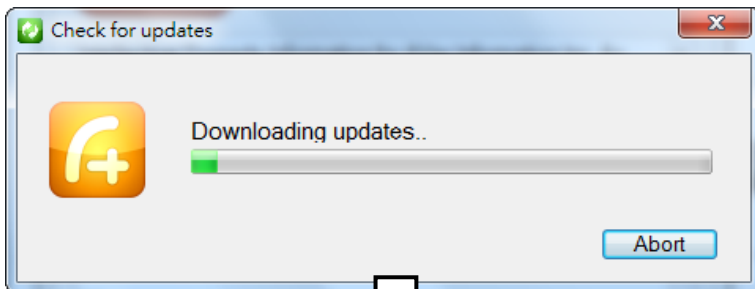


To check for update

1. Press the  button and then you will see the update information if your version is old.



2. If you want to start downloading the latest version, please press start button and wait until it is finished.



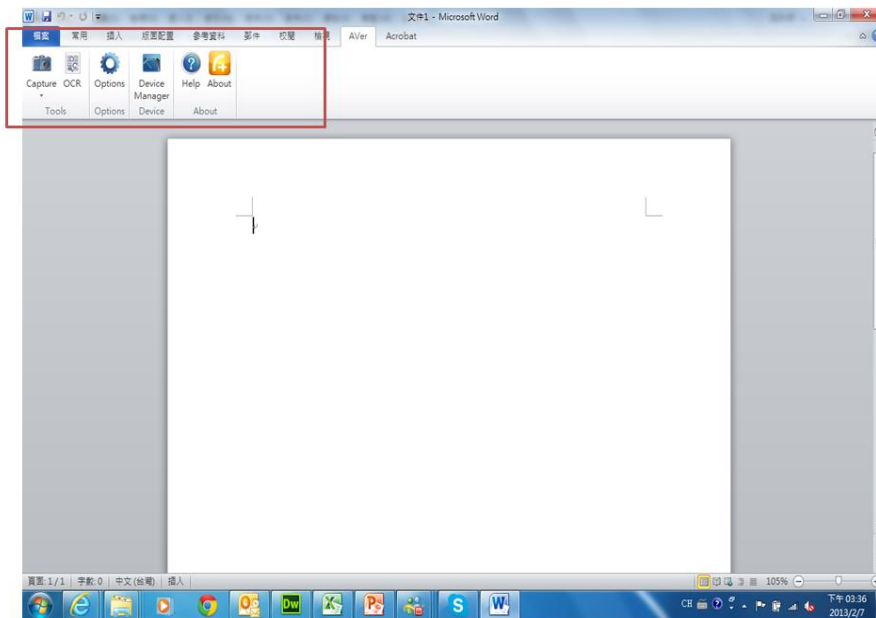
3. Now you can start to install our latest version.

A+ Plug-in for Word

Overview



A+ Plug-in for Word opens the MS PowerPoint 2007 or 2010. The “AVer” ribbon will be added in the tab selections. The features provided in the AVer ribbon allow you to take screenshots from any part of your screen and insert it directly on your presentation slide. You can also convert any printed or typewritten text from the scanned images, screenshots, or visualize live video image into editable text that can be inserted in Excel.

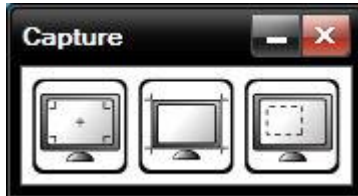


Capture





This is an easy and one quick way to take a screen shot from your desktop screen. It allows you to take screenshots from any part of your screen in 3 ways and insert it directly on your presentation slide.


[Note] This program can also be run from this icon



To use the capture

Click  to capture the entire screen.

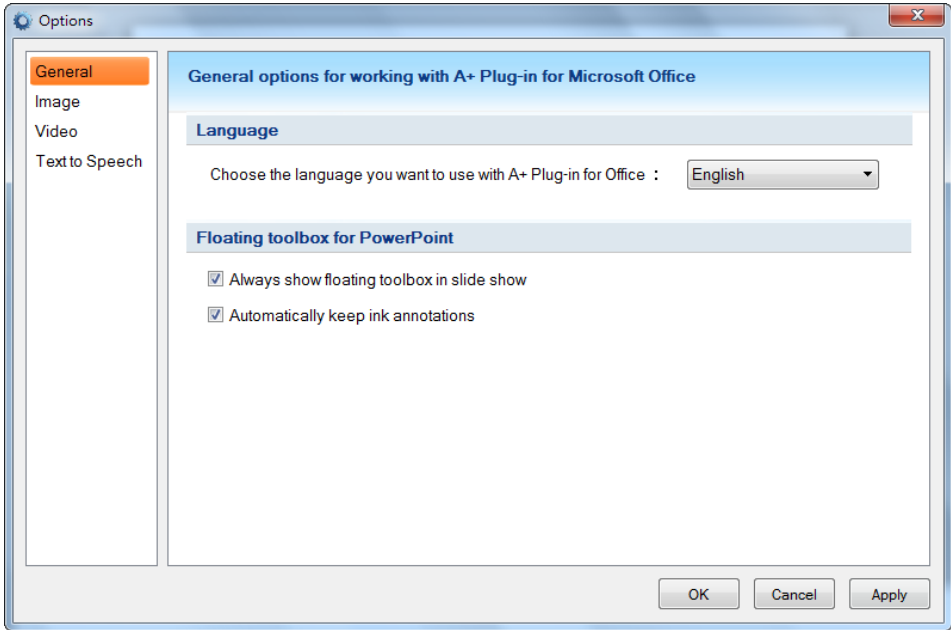
Click  to capture the active window.

Click  to capture a region of the screen.

Option



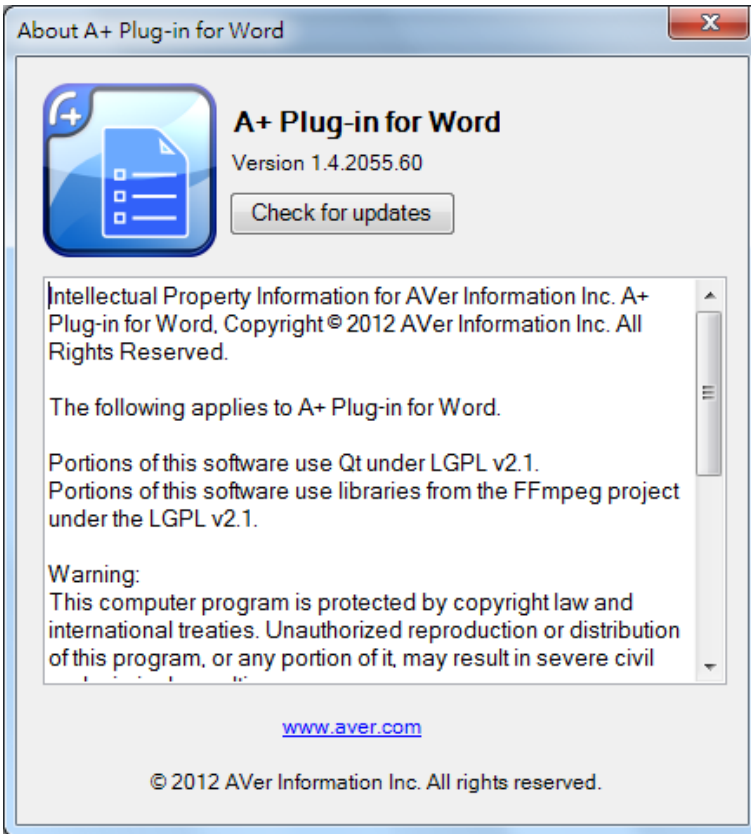
In Options dialog box, you can change the setting of A+ Plug-in for PowerPoint in General, the Capture settings in Image, the Recorder settings in Video, the Teaching tool text to speech setting.



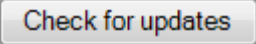
Check for Update

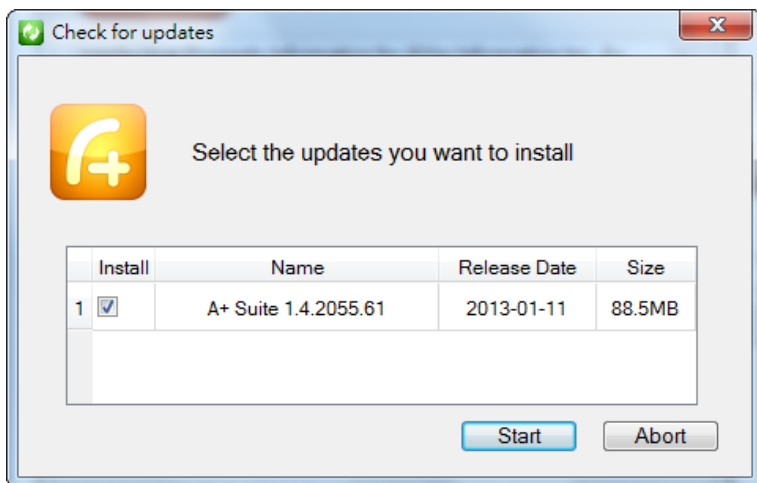


In About dialog box, you can get information of the software product introductions. If we have released the latest version for A+ Suite, you can also find **Check for Update** button in this page and start to update.

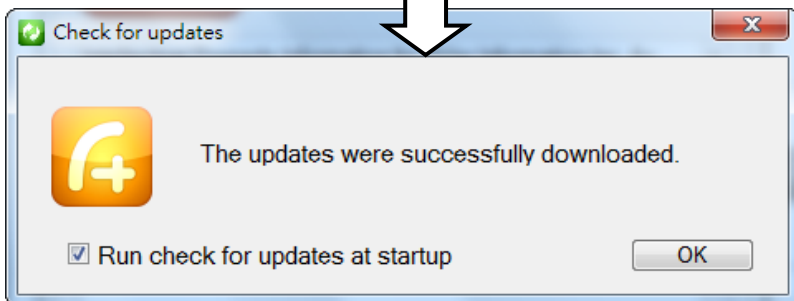
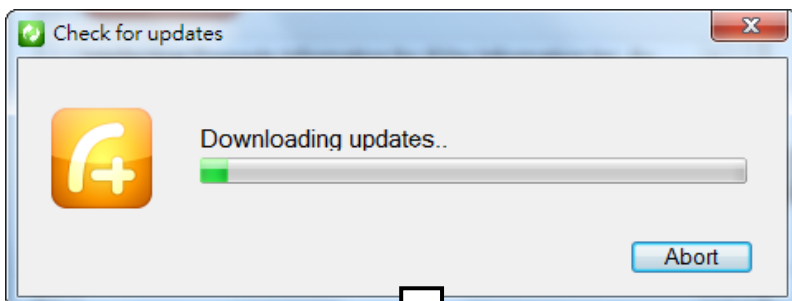


To check for update

1. Press the  button and then you will see the update information if your version is old.



2. If you want to start downloading the latest version, please press start button and wait until it is finished.



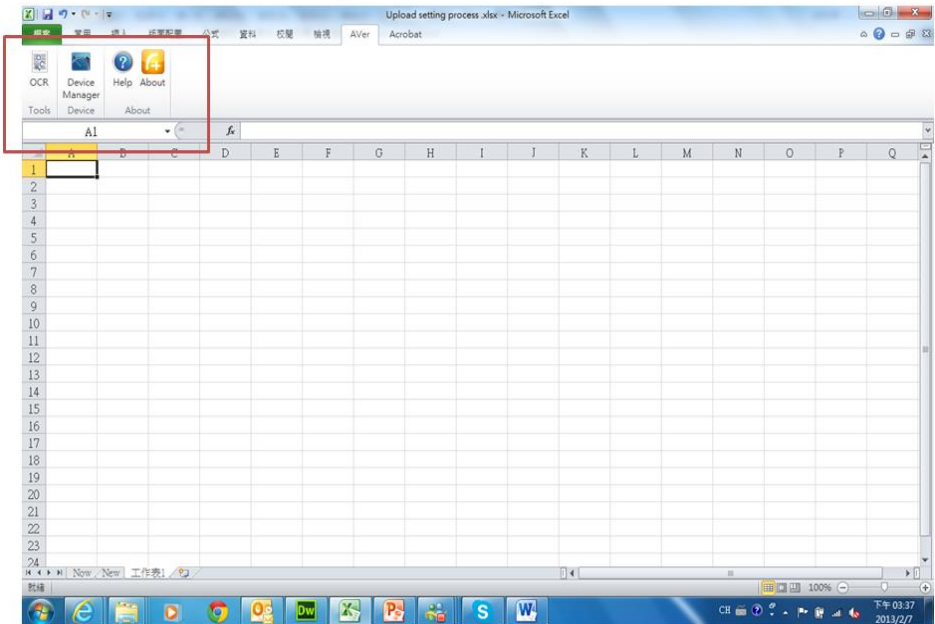
3. Now you can start to install our latest version.

A+ Plug-in for Excel

Overview



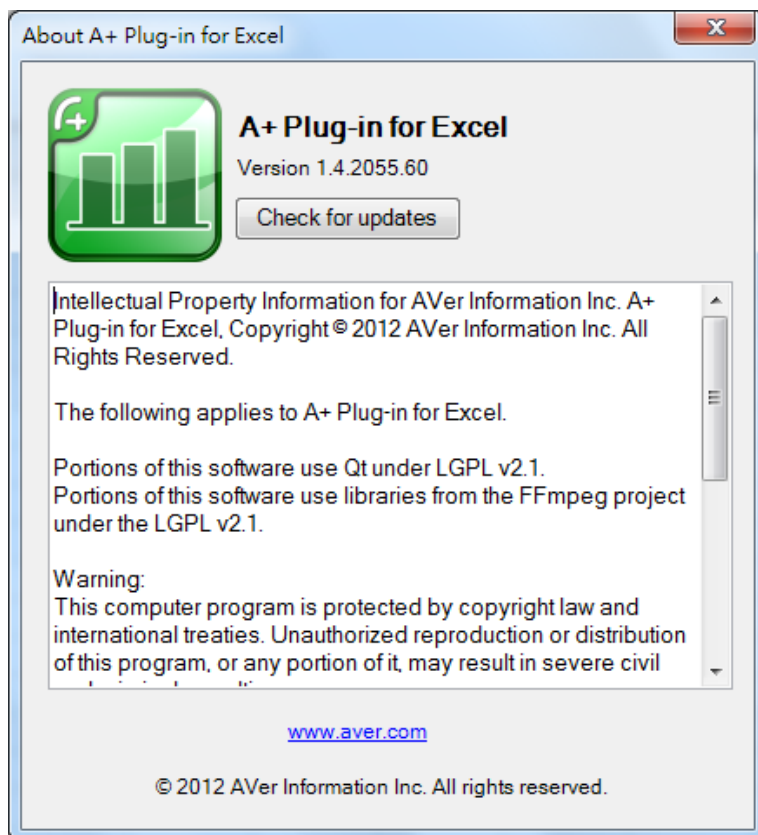
A+ Plug-in for Excel opens the MS PowerPoint 2007 or 2010. The “AVer” ribbon will be added in the tab selections. The features provided in the AVer ribbon allows you to convert any printed or typewritten text from the scanned images, screenshots, or AVerVision visualizer live video image into editable text that can be inserted in Excel or save as html.



Check for Update

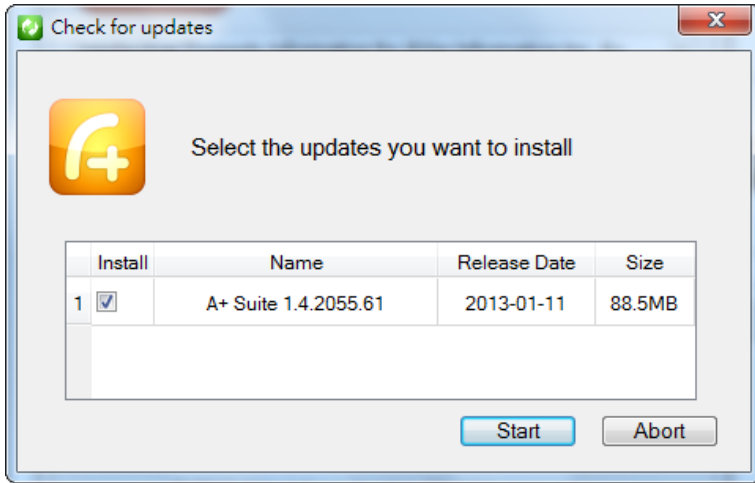


In About dialog box, you can get information of the software product introductions. If we have released the latest version for A+ Suite, you can also find **Check for Update** button in this page and start to update.

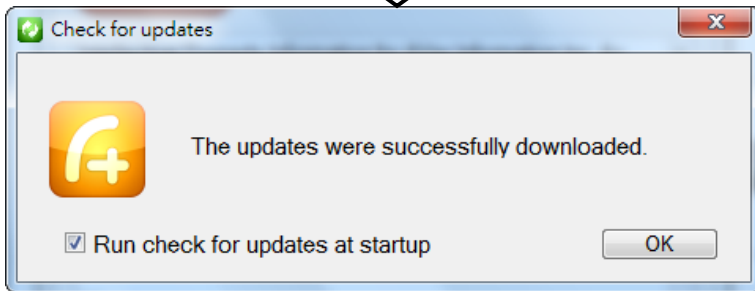
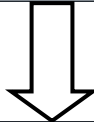
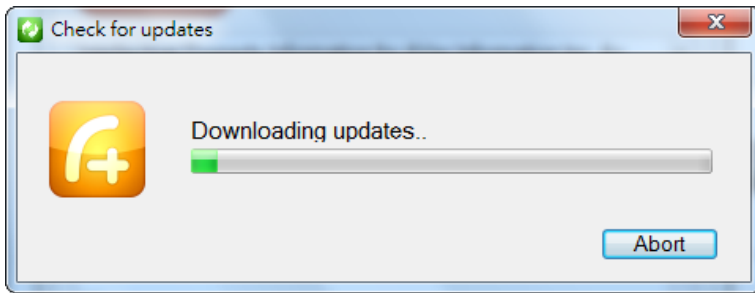


To check for update

1. Press the  button and then you will see the update information if your version is old.




2. If you want to start downloading the latest version, please press start button and wait until it is finished.



3. Now you can start to install our latest version.

Floating Toolbox

 The Floating toolbox will appear on the screen when you are in slide show mode. Double-click the icon to expand the control panel to access the tools that would allow you to use while you are doing your PowerPoint slide show presentation.



Main



Annotation



Teaching tool



Teaching game

Main Toolbox

In the main toolbox, you can access AVerVision to insert and view live video from your AVerVision visualizer, Record to record your PowerPoint presentation, Capture to take a snapshot of your presentation, use the teaching tools, and switch to Annotation and teaching game toolbox.



Main

Annotation



Annotation allows you to draw straight line, freeform line, highlight transparent line, and shape on your slide presentation.



Annotation





Shape

To change the color of the line and shape

Click and select the color in the color palette around the toolbox.

To delete line and shape

Click  to delete one object at a time or  to delete all the annotations.

Teaching tool



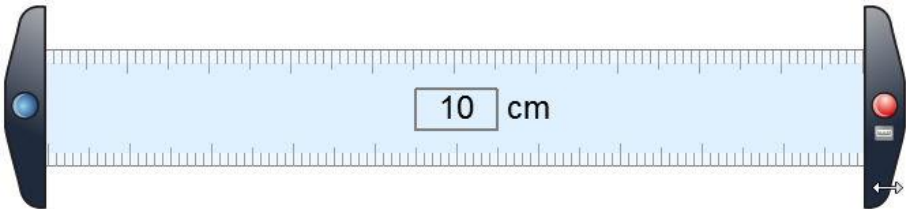
Teaching tool allows you to insert ruler and protractor to measure line and angle, and read the text in your PowerPoint text box.



Teaching tool

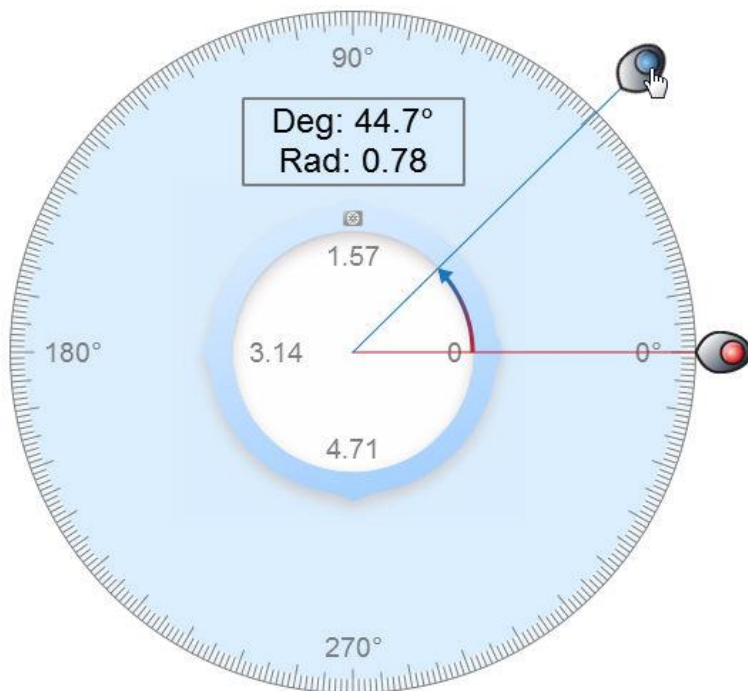
To extend the ruler

Point the mouse cursor at the edge of the ruler to show the 2-headed arrow appears. Then click and drag to extend the ruler.

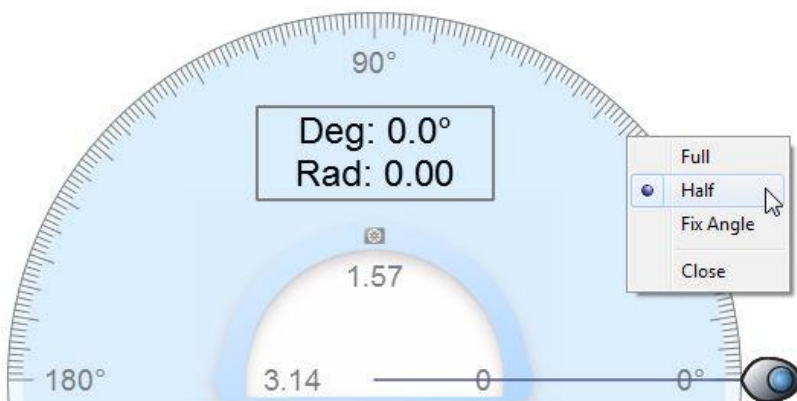


To use the protractor

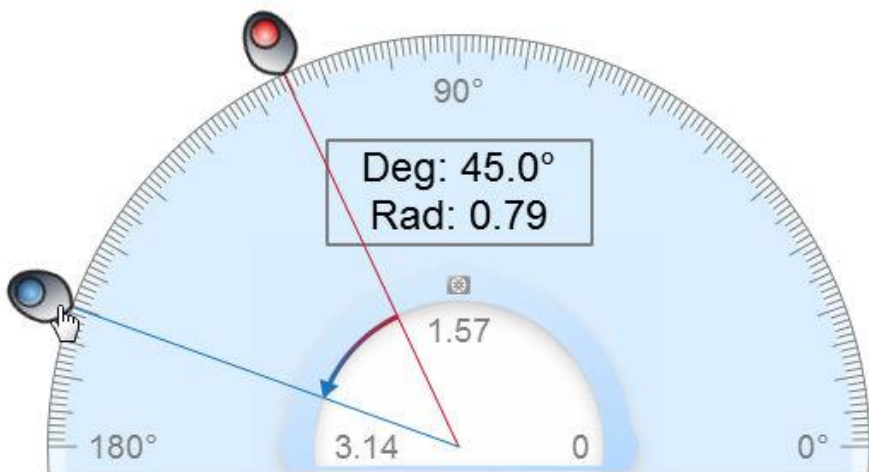
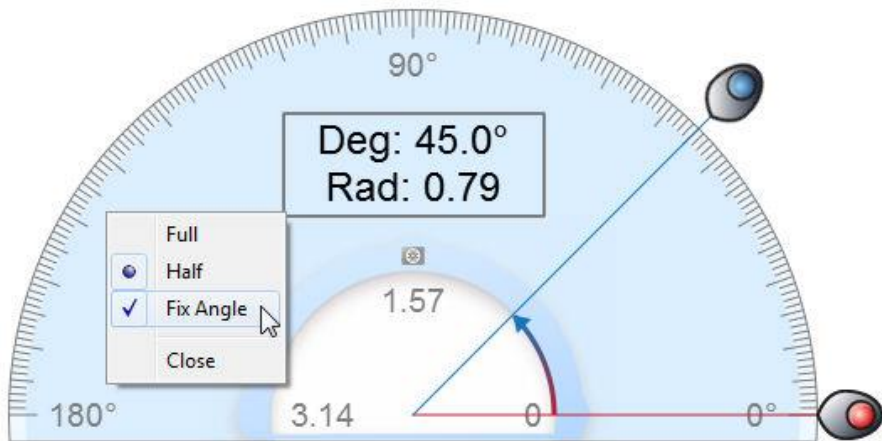
Click on the blue button and move up or down to create an angle.




Right-click on the protractor to close, change protractor to Full or Half.



After setting the angle, you can also set to fix the angle which allows you to move around without changing the angle value.



To use the text to speech

Click  to turn on text to speech and move the cursor on the text. The cursor will change into text to speech icon.

Click on the spotted text box to start reading.

This is a box.

AVerVision Flash Plug-in

Any programs or software that supports playing or importing Shockwave Flash file, you can insert or use the *.swf file to view the video from your AVerVision visualizer. Double-click to open the folder and access the AVerVision Flash Plug-in file.

[Note] Flash player must be installed in the computer to be able to use this file. In the Adobe Flash Player Settings dialog box, make sure Allow is selected.

