

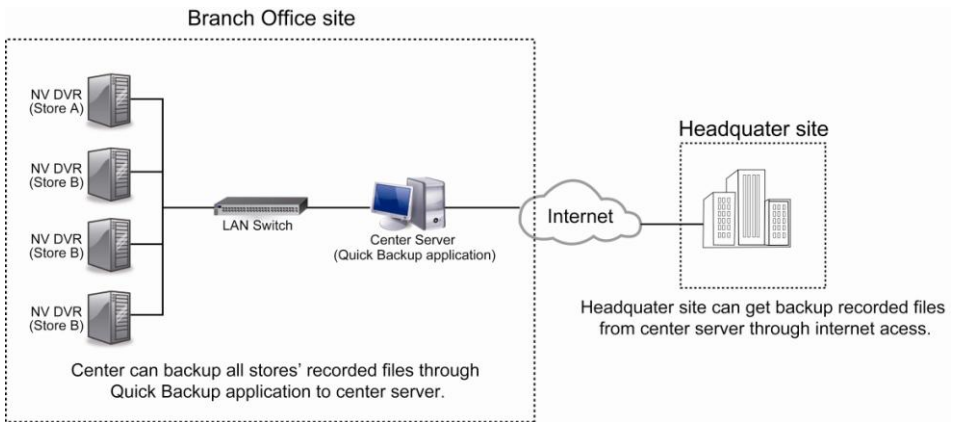
Quick Backup Application

Quick User Guide

The Quick Backup application allows user to backup several DVRs' recorded data through network connection from the remote site.



The Quick Backup application only do one time backup, not the seclude backup.



1. Have a network disk and create a folder for saving backup files. This network disk must can be connected by all DVRs that the DVRs user wants to backup and the PC runs the Quick backup application.
2. Please check each DVR's backup storage path is located to the folder that is created on network disk for backup file.



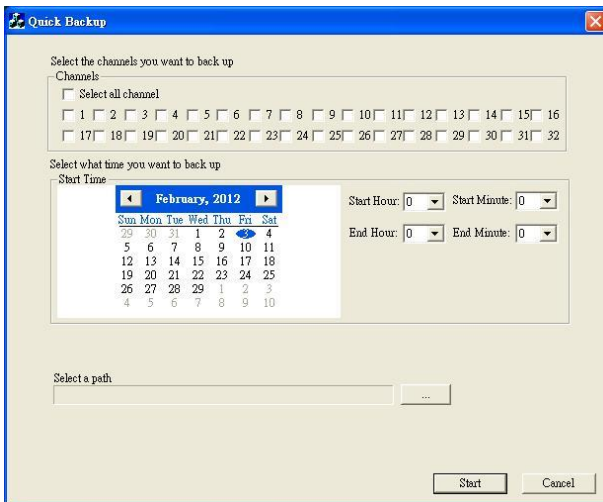
The backup storage path setting is in **Backup setting**.

3. Runs the Quick Backup application on the PC.
4. Select the **Channels** that user wants to backup.
5. Next, select the date and set the **Start Hour** and **End Hour**. Then End Hour cannot set to 0 hour and 0 minute. If End Hour set to 0 hour and 0 minute would cause backup is not work.
6. Then, select the path to save a *.ini file generated by Quick Backup application. And, this path is going to save all backup file from DVRs.



- The Path is better a network disk and all DVRs can be connected to this network disk.
- The *.ini file is used for DVRs to indentify and to run the backup producer.

7. Finally, click **Next** button to generate a *.ini file into the path that user has selected in step 5.



8. After completed the all above steps, the remote DVRs will start backup recorded file based on the channel, date, and time that user has selected in Quick Backup window.
9. When backup producer completed, user should see the backup files in the path directory that user has created on network disk.