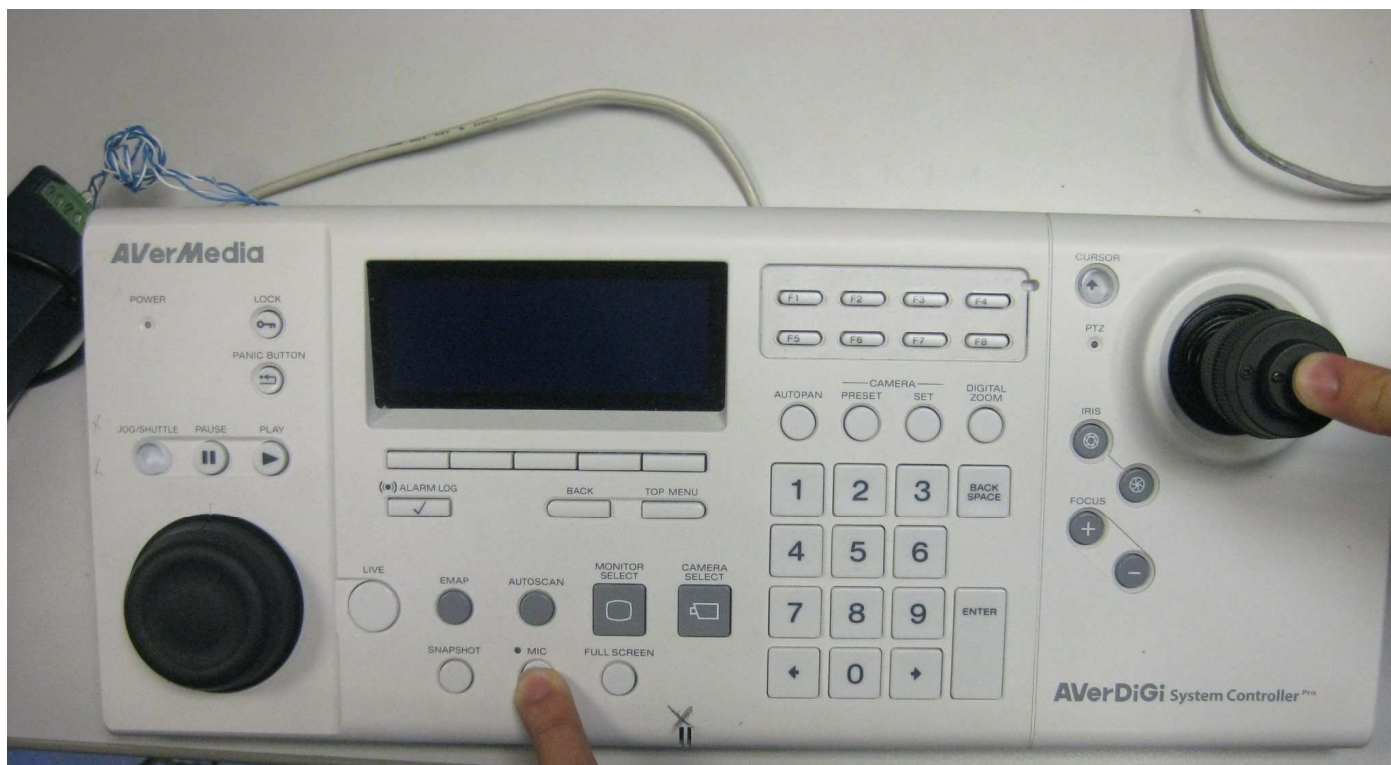


**AVerMedia Information Inc. Product Operation SOP– System controller Pro firmware update on CMS3000**

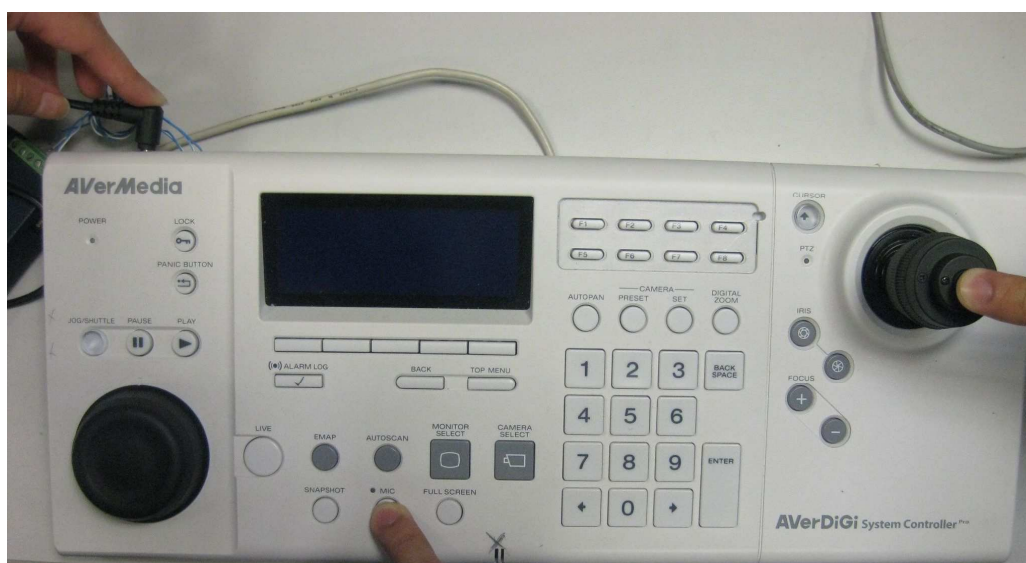
Product:	CMS3000&System controller Pro	FW-Version:	7.7.0.0.0059 or above
Category:	Firmware Update SOP	Importance:	Medium
Question:	How to update system controller Pro firmware through CMS3000 Software		

**Step #1: On System controller Pro Side.**

1. Prepare System controller Pro, Push “Mic” button and the “PTZ control central” button at the same time and hold still.

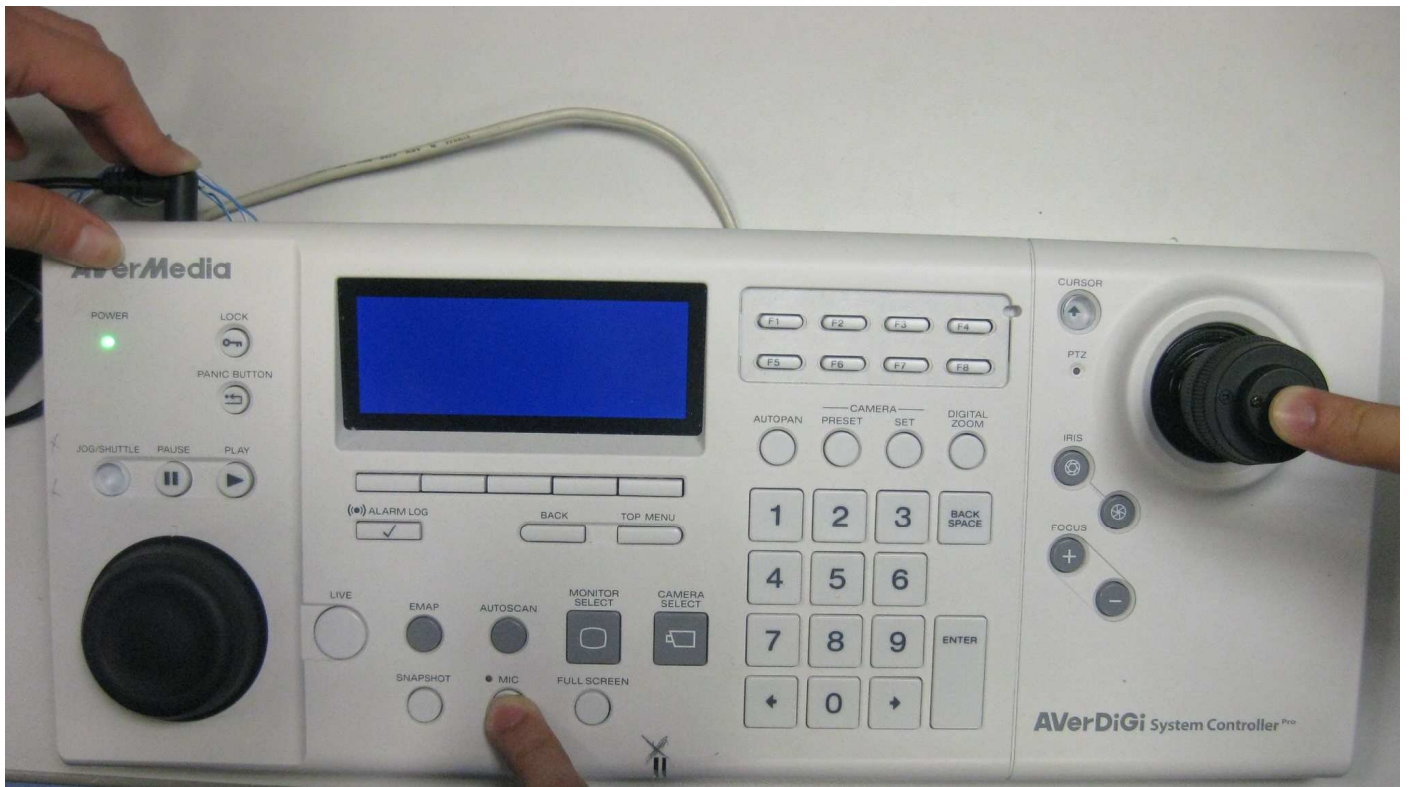


2. Plug in the power cable, please hold still your fingers., and wait for the LCD light up



Document Name	Preparation	Approval	Issue Date	Revision
(SOP) System controller Pro update firmware through CMS3000	FAE	Wendy	May. 19 <sup>th</sup> , 2010	1.0

3. The power led will light up first, then LCD monitor.

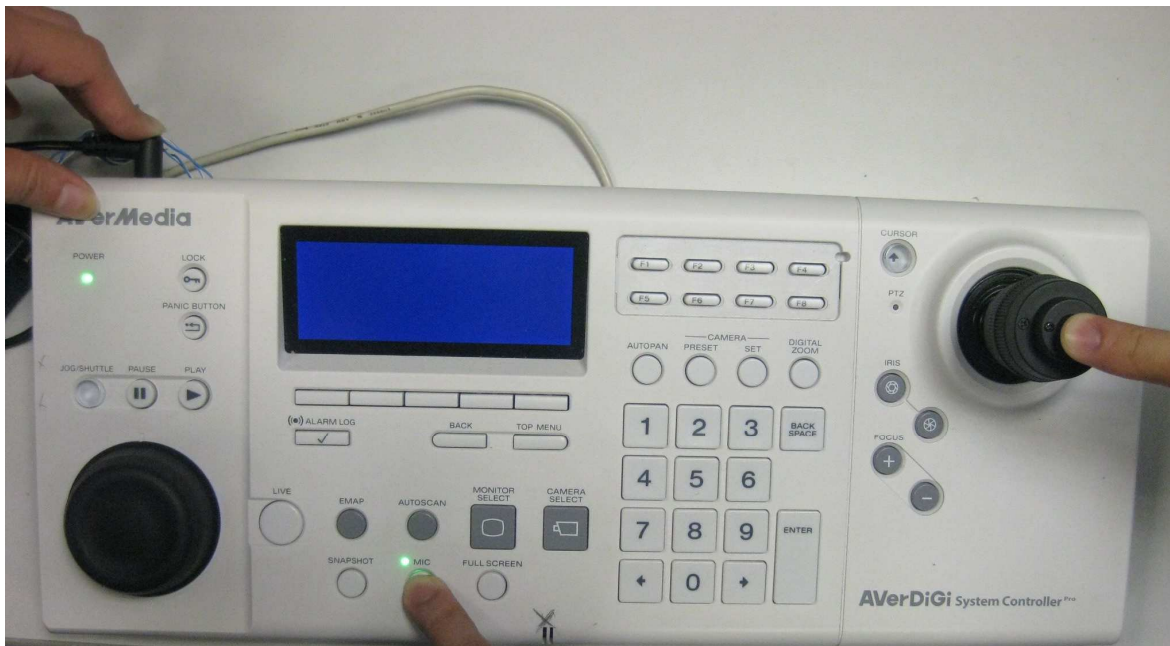


4. Now the system controller Pro will boot into firmware update mode. You will not see any characters on the LED screen which is normal.

Document Name	Preparation	Approval	Issue Date	Revision
(SOP) System controller Pro update firmware through CMS3000	FAE	Wendy	May. 19 <sup>th</sup> , 2010	1.0



- When you see the “Mic” button light is on you can now remove your fingers from those buttons.



Document Name	Preparation	Approval	Issue Date	Revision
(SOP) System controller Pro update firmware through CMS3000	FAE	Wendy	May. 19 <sup>th</sup> , 2010	1.0

6. Please insert the USB cable of System controller Pro to CMS 3000 computer device.


---

### Step #2: On DVR Server Side.

---

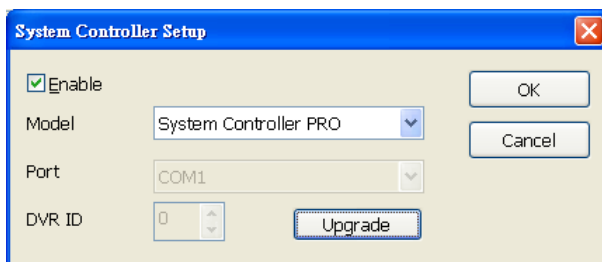
Follow the below steps to select the model:

1. Start up the DVR program.
  2. Click **Setup**.
  3. Select System, the **System Setting** windows will appear.
  4. Click **Detail** that is next to the **System Controller selection**.
  5. Mark **Enable** check box to enable the function of the system controller.
  6. Select the **Model** as **System Controller Pro (USB connection)**.
  7. When DVR server has detected the System Controller device, user should see the model name System Controller Pro in drop-down list.
- 

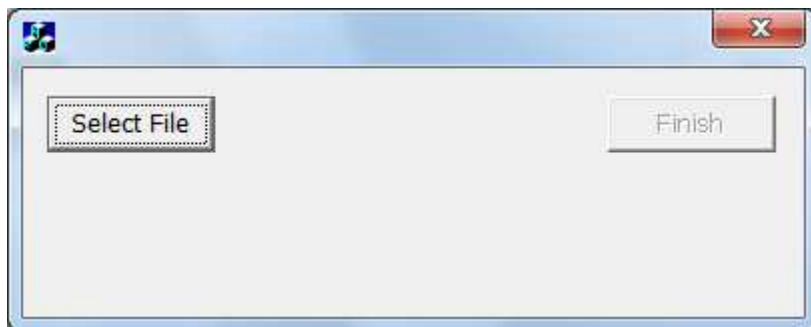
 The upgrade process doesn't support when System Controller connect to DVR server through the RS485 port.

---

1. Click **Upgrade** button.



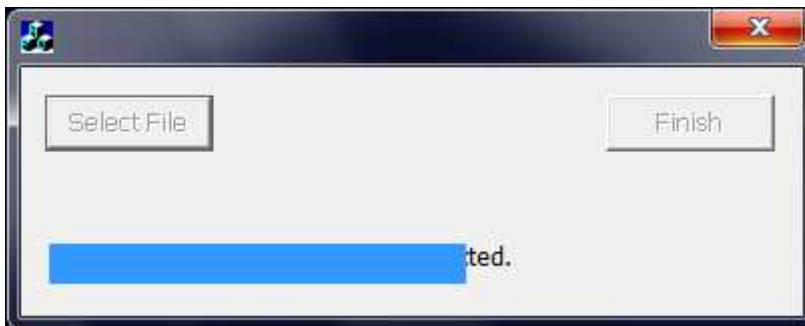
2. Click **Select File** button to locate the firmware.



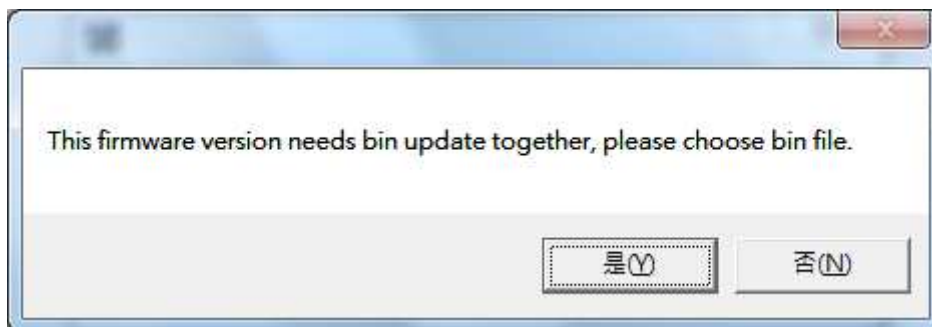
Document Name	Preparation	Approval	Issue Date	Revision
(SOP) System controller Pro update firmware through CMS3000	FAE	Wendy	May. 19 <sup>th</sup> , 2010	1.0



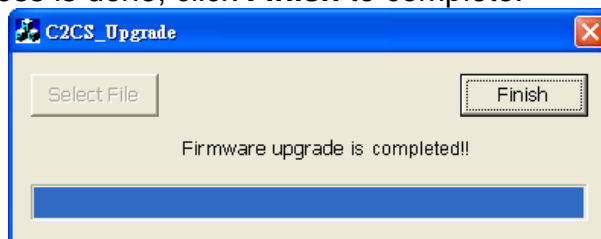
3. Select the firmware file and click **OK**. The upgrade process will start.



4. The upgrade firmware may have more than one file. Therefore, click **OK** and locate the firmware file to upgrade another file.



5. When the upgrade process is done, click **Finish** to complete.



### Step#3: Verifying the current System Controller PRO firmware

1. Press the main Settings button.

Document Name	Preparation	Approval	Issue Date	Revision
(SOP) System controller Pro update firmware through CMS3000	FAE	Wendy	May. 19 <sup>th</sup> , 2010	1.0



2. Press the “System” button



Document Name	Preparation	Approval	Issue Date	Revision
(SOP) System controller Pro update firmware through CMS3000	F AE	Wendy	May. 19 <sup>th</sup> , 2010	1.0

3. Press the “Ver.” Button.



The LCD display will show the current System Controller PRO firmware version.



Document Name	Preparation	Approval	Issue Date	Revision
(SOP) System controller Pro update firmware through CMS3000	FAE	Wendy	May. 19 <sup>th</sup> , 2010	1.0